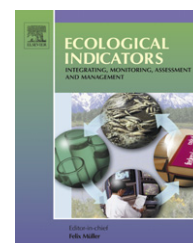




available at www.sciencedirect.com



journal homepage: www.elsevier.com/locate/ecolind



Review

An overview of sustainability assessment methodologies

Rajesh Kumar Singh^{a,*}, H.R. Murty^a, S.K. Gupta^b, A.K. Dikshit^b

^a Bhilai Steel Plant, SAIL, Bhilai, India

^b Centre for Environmental Science and Engineering, Indian Institute of Technology, Mumbai, India

ARTICLE INFO

Article history:

Received 11 February 2008

Received in revised form

12 May 2008

Accepted 21 May 2008

Keywords:

Sustainable development

Sustainability indicators

Index

Composite index

Ratings

ABSTRACT

Sustainability indicators and composite index are increasingly recognised as a useful tool for policy making and public communication in conveying information on countries and corporate performance in fields such as environment, economy, society, or technological improvement. By visualizing phenomena and highlighting trends, sustainability indicators simplify, quantify, analyse and communicate otherwise complex and complicated information.

There are number of initiatives working on indicators and frameworks for sustainable development (SD). This article provides an overview various sustainability indices applied in policy practice. The paper also compiles the information related to sustainability indices formulation strategy, scaling, normalisation, weighting and aggregation methodology.

© 2008 Elsevier Ltd. All rights reserved.

Contents

1. Introduction	191
2. Sustainable development indicators	191
3. Classification and evaluation of sustainability assessment methodologies	194
3.1. Guidelines for construction of Indices	195
4. Composite Indicators for Sustainability	197
5. Overview of Sustainability Indices	198
5.1. Innovation, Knowledge and Technology Indices	198
5.1.1. Summary Innovation Index	198
5.1.2. Investment in the knowledge-based economy	198
5.1.3. Performance in the knowledge-based economy	198
5.1.4. Innovation Index	198
5.1.5. National innovation capacity	199
5.1.6. Information and communication technologies	199
5.1.7. Technology Achievement Index	199
5.1.8. General Indicator of Science and Technology	199
5.1.9. Success of software process improvement	199

* Corresponding author.

E-mail address: rajesh1969@iitb.ac.in (R.K. Singh).

1470-160X/\$ – see front matter © 2008 Elsevier Ltd. All rights reserved.

doi:10.1016/j.ecolind.2008.05.011

5.2.	Development Indices	199
5.2.1.	Human Development Index	199
5.2.2.	Index of sustainable and economic welfare.	199
5.2.3.	Relative intensity of regional problems in the Community (by the EC).	199
5.3.	Market- and Economy-based Indices	200
5.3.1.	Internal Market Index.	200
5.3.2.	Business Climate Indicator.	200
5.3.3.	European Labour Market Performance.	200
5.3.4.	Composite Leading Indicators	200
5.3.5.	Genuine Savings (GSs)	200
5.3.6.	Economic Sentiment Indicator.	200
5.3.7.	Green Net National Product (EDP) and SEEA	200
5.4.	Eco-system-based Indices	200
5.4.1.	Sustainability Performance Index.	200
5.4.2.	Eco-Index Methodology	200
5.4.3.	Living Planet Index.	201
5.4.4.	Ecological Footprint (EF)	201
5.5.	Composite Sustainability Performance Indices for Industries	201
5.5.1.	Composite sustainable development index	201
5.5.2.	Composite Sustainability Performance Index	201
5.5.3.	ITT Flygt Sustainability Index.	201
5.5.4.	G Score method	201
5.6.	Investment, Ratings and Asset Management Indices	201
5.6.1.	Sustainable Asset management (SAM) Zurich, Switzerland (www.sam-group.com).	201
5.6.2.	Dow Jones sustainability group indices (DJSI), US (www.sustainability-index.com).	201
5.6.3.	Bovespa Corporate Sustainability Index.	202
5.6.4.	Benchmarking US petroleum refineries, the Environmental Defence Fund (EDF), US NGO	202
5.6.5.	ECCO-CHECK Index, Environmental Risk Rating Ltd., Surrey, UK	202
5.6.6.	Investor Responsibility Research Centre (IRRC), Washington, DC, US (www.irrc.org).	202
5.6.7.	Council on Economic Priorities (CEP), New York, US (www.cepnyc.org)	202
5.6.8.	Oeko Sar Fund, Bank Sarasin and Cie, Basel, Switzerland (www.sarasin.ch)	202
5.6.9.	Storebrand Scudder Environmental Value Fund, Oslo, Norway (www.storebrand.no)	202
5.6.10.	Innovest strategic value advisors (www.innovestgroup.com)	203
5.6.11.	OEKOM Environment Rating.	203
5.6.12.	Jupiter Income Trust Funds (subsidiary of Jupiter Tyndall Group PLC), UK (www.jupiteronline.co.uk)	203
5.6.13.	FTSE Good Index.	203
5.7.	Product-based Sustainability Index.	203
5.7.1.	Life Cycle Index	203
5.7.2.	Ford of Europe's Product Sustainability Index	203
5.8.	Sustainability Indices for Cities.	204
5.8.1.	Urban Sustainability Index.	204
5.8.2.	Sustainability Index for Taipei	204
5.8.3.	City Development Index.	204
5.8.4.	Compass Index of Sustainability	204
5.8.5.	The Sustainability Cities Index.	204
5.8.6.	Ecosistema Urbano Performance Index	204
5.8.7.	Sustainable Seattle: developing Indicators of Sustainable Community.	204
5.9.	Environmental Indices for Policies, Nations and Regions.	204
5.9.1.	Environment Sustainability Index	204
5.9.2.	Environment Quality Index	205
5.9.3.	Concern about environmental problems	205
5.9.4.	Index of Environmental Friendliness	205
5.9.5.	Environmental Policy Performance Indicator (by Adriaanse A., the Netherlands)	205
5.9.6.	Environmental Performance Index.	205
5.9.7.	Environmental Vulnerability Index	205
5.9.8.	Two "synthetic environmental indices"	205
5.10.	Environment Indices for Industries.	205
5.10.1.	Eco-Points	205
5.10.2.	Eco-compass	205
5.10.3.	Eco-indicator 99	205

5.10.4. Environment Assessment for Cleaner Production Technologies	208
5.10.5. COMPLIMENT—Environment Performance Index for Industries	208
5.11. Energy-based Indices	208
5.11.1. Sustainability Assessment tool for Energy System	208
5.11.2. Energy Indicators for tracking Sustainability in Developed Countries	208
5.12. Social and Quality of Life-based Indices	208
5.12.1. Gender Empowerment Measure	208
5.12.2. Physical Quality of Life Index	209
5.12.3. Well-being Assessment (Well-Being Index—WI)	209
5.12.4. National Health Care systems performance	209
5.12.5. Overall Health System Attainment	209
5.12.6. Index for sustainable society	209
6. Conclusion	209
References	210

1. Introduction

The concept of sustainable development (SD) has become an important objective of policy makers in the industry. The Brundtland report defines the sustainable development as development that meets the needs of the present generation without compromising the ability of future generations to meet their own needs (WCED, 1987). There are number of frameworks of sustainability assessment that evaluate the performance of companies. The World Business Council for Sustainable Development (WBCSD, 1997), the Global Reporting Initiative (GRI, 2002a,b) and development of standards (OECD, 2002a,b) were the foundation for sustainability reporting. Azapagic (2004) developed a framework for sustainability indicators for the mining and minerals industry, which is also compatible to GRI. Krajnc and Glavic (2005) collected and developed a standardised set of sustainability indicators for companies covering all main aspects of sustainable development.

Indicators and composite indicators are increasingly recognised as a useful tool for policy making and public communication in conveying information on countries' performance in fields such as environment, economy, society, or technological development.

'Indicators arise from values (we measure what we care about), and they create values (we care about what we measure)' (Meadows, 1998). The main feature of indicators is their ability to summarise, focus and condense the enormous complexity of our dynamic environment to a manageable amount of meaningful information (Godfrey and Todd, 2001). By visualizing phenomena and highlighting trends, indicators simplify, quantify, analyse and communicate otherwise complex and complicated information (Warhurst, 2002).

There is a widely recognised need for individuals, organisations and societies to find models, metrics and tools for articulating the extent to which, and the ways in which, current activities are unsustainable. This need arises on multiple layers ranging from supra-national (e.g. the negotiation of protocols for environmental protection), national (e.g. via some version of "greening" GDP) and sub-national levels (e.g. in regional development forums) (Ramachandran, 2000).

In an effort to introduce and define sustainability science, Kates et al. (2001) provide seven core questions for research.

Two of them are particularly connected to the issue of assessing sustainability:

- "How can today's operational systems for monitoring and reporting on environmental and social conditions be integrated or extended to provide more useful guidance for efforts to navigate a transition toward sustainability?"
- How can today's relatively independent activities of research planning, monitoring, assessment, and decision support be better integrated into systems for adaptive management and societal learning?"

According to Kates et al. (2001), the purpose of sustainability assessment is to provide decision-makers with an evaluation of global to local integrated nature–society systems in short- and long-term perspectives in order to assist them to determine which actions should or should not be taken in an attempt to make society sustainable.

The need for an integral systematic approach to indicators definition and measurement is recognised (Bos- sel, 1999) in order to give well-structured methodologies, easy to reproduce and to assure that all important aspects are included in the measurement. However, before developing the methodology and the indicators what is needed is the clear definition of the policy goals towards sustainability. This appears to be even more difficult since in most cases the development of indicators has started while there are still arguments over what constitutes sustainable development.

2. Sustainable development indicators

Warhurst (2002) considers measuring of sustainable development as a two-step approach. Firstly, the progress made in a number of selected individual fields is measured by SDIs and secondly, the overall progress made towards sustainable development is assessed by a combination of these individual fields with regard to their interlinking.

According to Lancker and Nijkamp (2000), 'a given indicator does not say anything about sustainability, unless a reference value such as thresholds is given to it'.

Summarizing from Lundin (2003) and Berke and Manta (1999) SDIs can be used to:

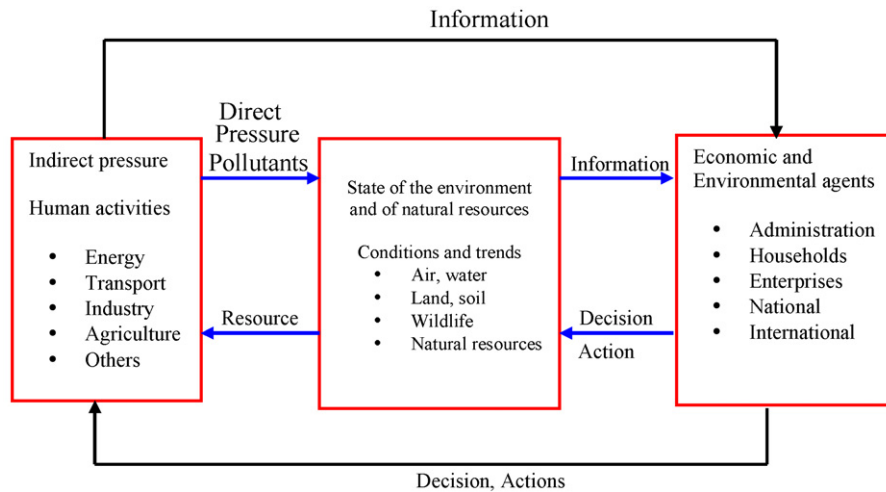


Fig. 1 – The pressure-state-response framework. Source: OECD (1998).

- Anticipate and assess conditions and trends.
- Provide early warning information to prevent economic, social and environmental damage.
- Formulate strategies and communicate ideas.
- Support decision-making.

When developing a framework and selecting SDIs, two distinctive main approaches can be distinguished (Lundin, 2003):

- The 'top-down' approach, which means that experts and researchers define the framework and the set of the SDIs.
- The 'bottom-up' approach that features the participation of different stakeholders in the design of the framework and the SDI selection process.

To tackle the problem of insufficient physical relations between society and nature, Holmberg and Karlsson (1992) introduced the concept of socio-ecological indicators (SEIs). The Pressure State Response (PSR) framework is based on the following concept of causality: human activities exert 'pressures' on the environment and change its quality and the quantity of natural resources (the 'state'). Society responds to

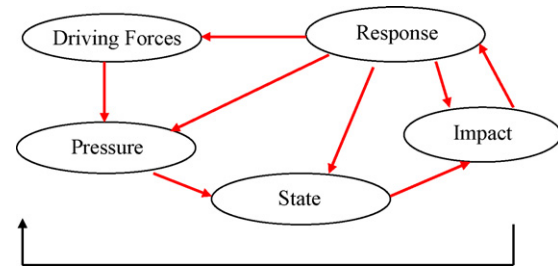


Fig. 2 – The DPSIR framework for reporting on environmental issues. Source: Smeets and Weterings, 1999.

these changes through environmental, general economic and sectoral policies (the 'societal response'). The latter forms a feedback loop to pressures through human activities (OECD, 1998). Fig. 1 illustrates this PSR-framework of OECD.

The Driving Force Pressure State Impact Response (DPSIR) model is an extension of the PSR framework and has been adopted by the European Environmental Agency (EEA) and the

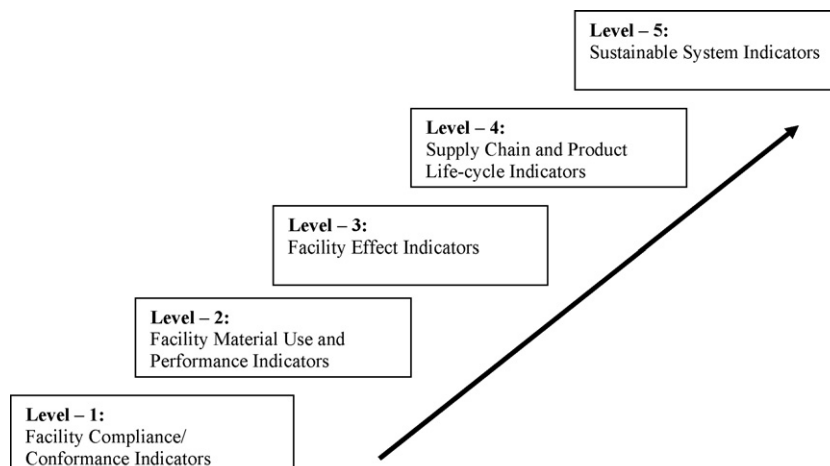


Fig. 3 – Lowell center for sustainable production indicator framework.

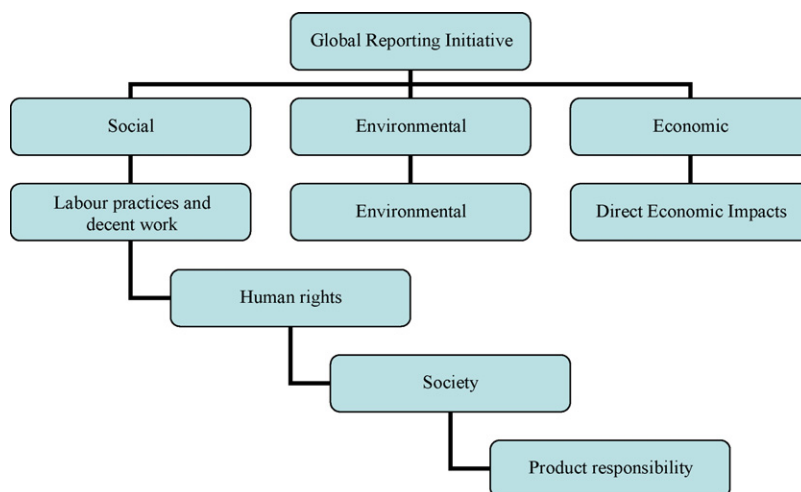


Fig. 4 – The hierarchical structure of the global reporting initiative (GRI) framework (Source: GRI, 2002a).

European Statistical Office in 1997. Fig. 2 visualises those five aspects and their connections.

Starting from the call for sustainable development indicators in Agenda 21, the UN Commission on Sustainable Development (CSD) published a list of about 140 indicators, which cover social, economic, environmental and institutional aspects of sustainable development (CSD, 2001).

In order to simultaneously evaluate both the environmental and social components of sustainable development, the barometer of sustainability has been developed (Prescott-Allen, 1995). It consists of two components, namely ecosystem well-being and human well-being that both have to be

improved for achieving sustainable development. The ecological footprint (Wackernagel and Rees, 1996) measures the total land area that is required to maintain the food, water, energy and waste-disposal demands per person, per product or per city.

The eco-efficiency framework of the WBCSD attempts to measure progress towards economic and environmentally sustainability using indicators that are relevant and meaningful for business (WBCSD, 1999).

The LCSP framework primarily focuses on the environmental, health and safety aspects of sustainable production. The framework suggests five levels in the development

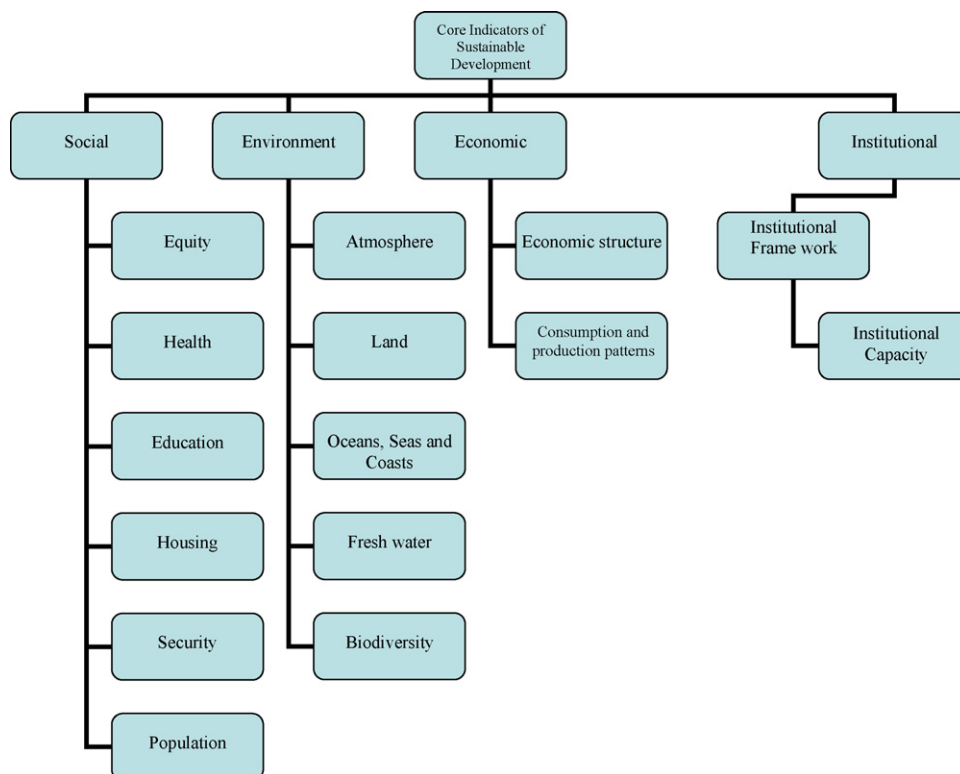


Fig. 5 – The United Nations Commission for Sustainable Development (UNCSD) Theme Indicator Framework.

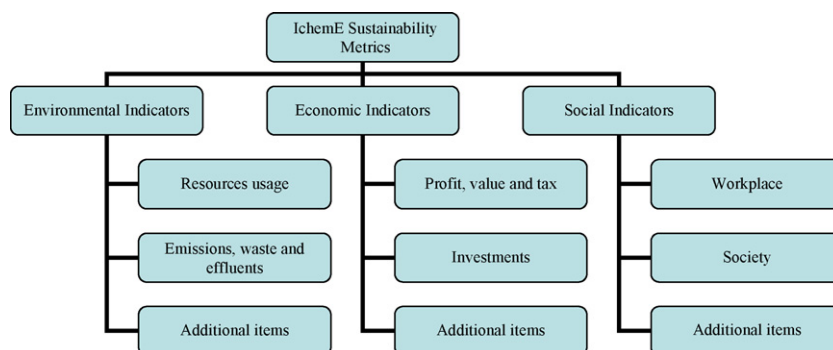


Fig. 6 – The Institute of Chemical Engineers (IChemE) Sustainability Metrics.

process moving toward sophisticated indicators of sustainable production as illustrated in Fig. 3.

To ensure optimised and effective steps towards sustainability, the progress and shortcomings need to be monitored and measured. Measurement systems (metrics) for SD are an area, where a lot of research and practical work has been conducted. The metrics should not be mixed with the tools and concepts, as they do not provide direct help to the actual work towards SD, but define the framework and operate as metrics and feedback loops for the process.

In 1997, the United Nations Environment Programme (UNEP) together with the United States nongovernmental organisation, Coalition for Environmentally Responsible Economics (CERES) launched the GRI with the goal of “enhancing the quality, rigour and utility of sustainability reporting”.

Reporting is therefore the strong focal point of the guidelines. The GRI uses a hierarchical framework in three focus areas, namely social, economic, and environmental (Fig. 4).

The United Nations Commission on Sustainable Development (CSD) constructed a sustainability indicator framework for the evaluation of governmental progress towards sustainable development goals. A hierarchical framework groups indicators into 38 sub-themes and 15 main themes, that are

divided between the four aspects of sustainable development (Fig. 5).

The Institution of Chemical Engineers (IChemE) published a set of sustainability indicators in 2002 to measure the sustainability of operations within the process industry (Fig. 6).

The Wuppertal Institute proposed indicators for the four dimensions of sustainable development, as defined by the United Nations CSD, together with interlinkage indicators between these dimensions (Fig. 7).

For the past two decades, there have been many local, regional, state/provincial, national and international efforts to find useful sustainability indicators. The UN Commission on Sustainable Development (UNCSD) from its working list of 134 indicators derived a core set of 58 indicators for all countries to use.

3. Classification and evaluation of sustainability assessment methodologies

There are two distinct methodologies that can be found for Sustainability Assessment. Mainstream economists use

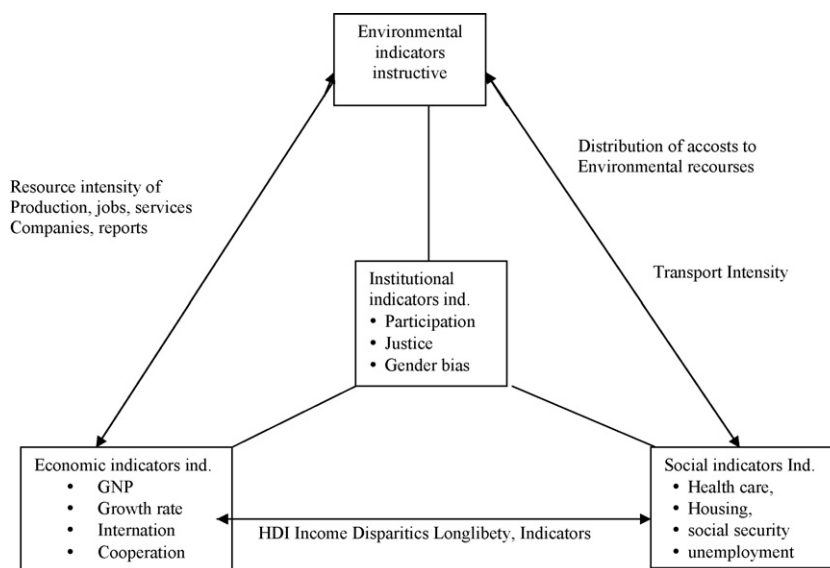


Fig. 7 – The Wuppertal Sustainable Development Indicator Framework.

monetary aggregation method, whereas scientists and researchers in other disciplines prefer to use physical indicators. Economic approaches include greening the GDP, resource accounting based on their functions, sustainable growth modelling, and defining weak and strong sustainability conditions. Mainstream economists assume sustainable growth to be a part of sustainable development of the economy.

In neo-classical models, natural environment is valued for its functions and economic welfare is measured in terms of the level of consumption. Therefore, sustainable growth models from this paradigm seek to find a non-declining per capita consumption path over an infinite time horizon through optimal use of resources and technology including discounted benefits from environmental functions and non-renewable natural resources. Substitution possibility between different types of capital is assumed in different forms.

The Hicks/Lindahl requirement for sustainable income is non-declining value of the aggregate capital stock (per capita produced capital and per capita natural capital) over time. *Weak sustainability condition* assumes perfect substitutability between produced and natural capital and *strong sustainability condition* assumes no substitutability. The assumption of secular improvement in factor productivity can ensure sustainability in neo-classical growth models.

In the Solow-Hartwick framework, sustainable growth path is different from the optimal growth path, which means that sustainability can be achieved at the cost of efficiency. Some recent models from the neo-classical paradigm have explored direct relationship between technological progress and sustainability. Endogenous growth models make the nature of technological progress explicit. The evolutionary modellers use inductive reasoning instead of trying to find the steady state. They are particularly concerned about fostering technical and institutional changes to reach sustainability.

The theme of ecological economics model is socio-economic and ecological co-evolution. Neo-Ricardian models of sustainability seek 'continual maintenance and joint renewal of economic and ecological structures (Pezzey, 1992).

For natural resource accounting, some economists use conventional capital theory that acknowledges the possibility of conversion of natural resource capital to other forms of capital. Some researchers used the depreciated values of natural resource stocks from the decreased values of the marketed commodities produced by the resource stocks to estimate resource depletion. Unit rent approach attempts to estimate the portion of income from resource liquidation that needs to be set aside as capital investment "in order to create a perpetual stream of income that would sustain the same level of true income, both during the life of the resource as well as after the resource had been exhausted."

Mainstream economists prefer monetary valuation simply because it represents the scarcity value of resources. Spangenberg (2005) considers 'the restriction of economic thinking' to monetary valuation of the functions of different types of capital 'a serious limitation for the analytical capacity of the discipline'. Citing criticisms about the assumption of strong substitutability between different types of capital in economic models, Spangenberg (2005) concluded that 'from a scientific point of view, there cannot

be such a thing as one comprehensive measure or index of sustainability'.

Ness et al. (2007) developed a holistic framework for sustainability assessment tool which is shown in Fig. 8. It consists of three umbrellas or general categorisation areas; these areas are (1) indicators and indices, which are further broken down into non-integrated and integrated, (2) product-related assessment tools with the focus on the material and/or energy flows of a product or service from a life cycle perspective, and (3) integrated assessment, which are a collection of tools usually focused on policy change or project implementation. There is also the overarching category at the bottom of the figure used when non-market values are needed in the three categories. The tools are arranged on a time continuum based on if they look back in time (retrospective) or if they are forward looking (prospective, forecasting) tools.

The classification and evaluation of indicators can be done based on the following general dimensions of measurement:

- What aspect of the sustainability does the indicator measure?
- What are the techniques/methods employed for construction of index like quantitative/qualitative, subjective/objective, cardinal/ordinal, unidimensional/multidimensional.
- Does the indicator compare the sustainability measure (a) across space ('cross-section') or time ('time-series') and (b) in an absolute or relative manner?
- Does the indicator measure sustainability in terms of input ('means') or output ('ends')?
- Clarity and simplicity in its content, purpose, method, comparative application and focus.
- Data availability for the various indicators across time and space.
- Flexibility in the indicator for allowing change, purpose, method and comparative application.

3.1. Guidelines for construction of Indices

First of all number and nature of the components that will make up part of the composite index need to be determined based on theory, empirical analysis, pragmatism or intuitive appeal, or some combination thereof. Both bivariate and multivariate statistical techniques are employed where selection is based on empirical analysis. Whereas bivariate analysis measures the strength of the association between all pairs of variables, multi-variate analysis assesses the overall power of any collection of variables to measure any other variable. Bivariate analyses traditionally employ correlation matrices in selection. Most notable of the multivariate techniques employed in composite indexing are discriminant, principal component and factor analyses. The purposes of these analytical techniques are to determine the number of latent variables underlying the data, to condense the data and to define the content and meaning of the factors or latent variables accounting for the variation in the data. Equally dependent on purpose is the distinction between variables focused on ends as opposed to means. Other important selection criteria include validity, reliability, comparability, simplicity, and data availability. Selection requires a balance between simplification and complication. Despite claims that value-judgements and

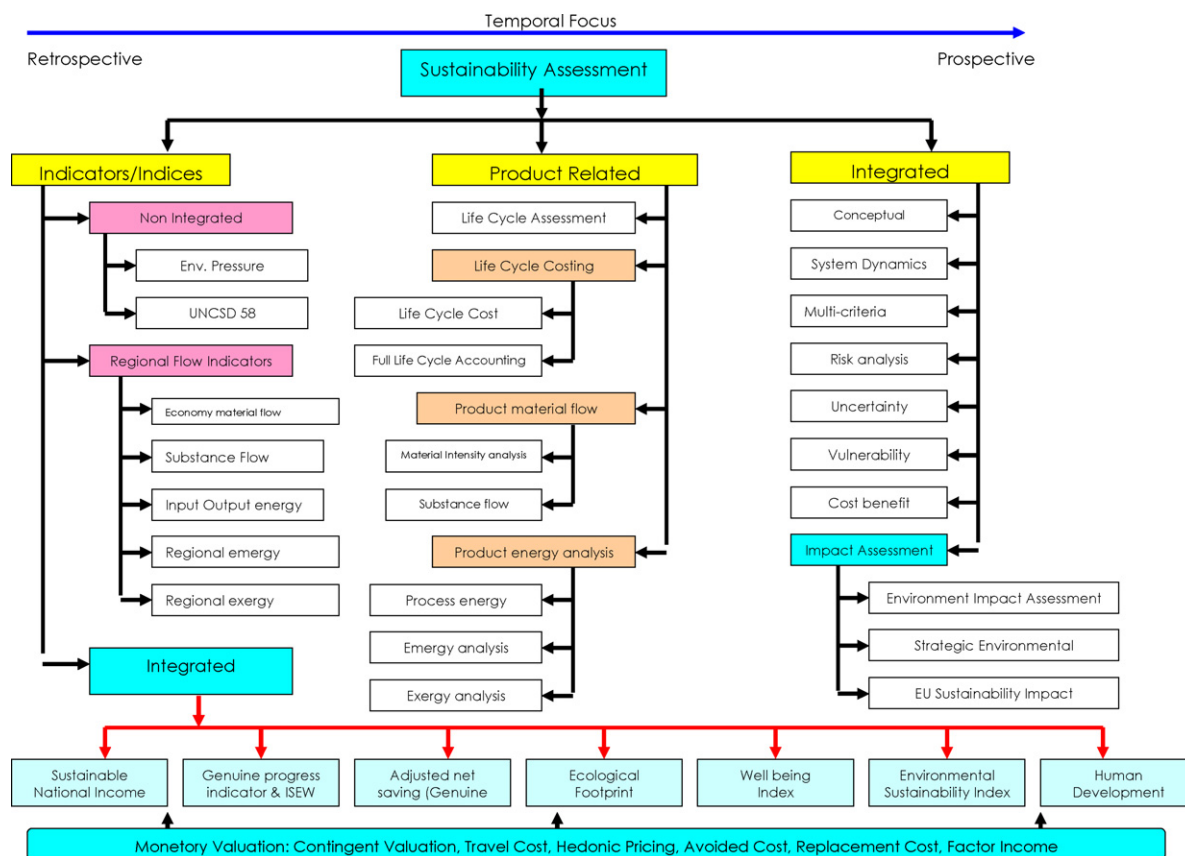


Fig. 8 – Framework of Sustainability Assessment Tools. Source: Barry Ness, Evelin Urbel-Piirsalua, Stefan Anderberg and Lennart Olsson, 2007.

cultural issues should be avoided as far as possible in selection, composite indexing remains an inherently value-laden and subjective exercise. Based on the goal, the components will have to be selected whether it is of universal significance or for local conditions.

Scaling for composite indexing purposes can be performed in one of four ways. Firstly, there is the option of not scaling variables. This is an especially viable option where variables are already scaled. In the second instance, the use of standard scores (z and t values) is also popular in composite indexing. Raw scores are first adjusted for directionality by multiplying each with either $+1$ or -1 . Standardisation then involves transforming raw scores on each indicator into standard scores, e.g. $z = (\text{actual score} - \text{mean}) / \text{standard deviation}$. Standard scores can be further adjusted if calculations yield awkward values. Options include the multiplication of all scores by 10 to obtain more visually manageable scores, adding the proportionate share of each component in the composite index to each component score, rounding each score to eliminate decimals, and adding 100 to each score to obtain better-indexed scores. Thirdly, there is the option of transforming variables into ordinal response scales. This may be done either during the survey itself or at a later stage using available data. Finally, there is the conventional linear scaling transformation (LST) method. Variables are scaled from 0 to 100 with the aid of this technique. This requires points of reference relative to which indicators can be scaled. A

minimum and a maximum value are usually identified for each of the variables.

Ebert and Welsch (2004) identified four generic classes of scales that can be applied to variables: interval-scale non-comparability (INC), interval-scale full comparability (IFC), ratio-scale non-comparability (RNC), and ratio-scale full comparability (RFC).

Table 1 provides an overview of which functional forms for the aggregation of variables are viable depending on their scales (and the desired mathematical properties).

Table 1 provides minimal methodological requirements to be met by any meaningful SD index. However, as will be laid out in the following section, indices applied in practice typically violate these qualifying conditions: whereas the aggregation of variables measured in ratio-scale without being comparable would call for a geometric mean, indices are often based on a (misleading) arithmetic mean.

One also needs to decide on the weighting system and method employed in aggregating component scores into one

Table 1 – Aggregation rules for variables by Ebert and Welsch

	Non-comparability	Full comparability
Interval scale	Dictatorial ordering	Arithmetic mean
Ratio scale	Geometric mean	Any homothetic function

composite index. In addition to the implicit weights introduced during scaling, explicit weights may be introduced during aggregation. The first option, though, is not to employ explicit weights. Here component and index scores are simply averages of the corresponding variable and component scores. Multivariate techniques present an empirical and relatively more objective option for weight selection. In the case of principal component analysis, components are weighted with the proportion of variance in the original set of variables explained by the first principal component of that particular component.

After weights have been assigned to each component index and the component scores weighted accordingly, these scores are aggregated into a composite score. The aggregation of indices tends to be of either an additive or a functional nature. Ideally, composite indices should remain relatively simple in terms of their construction and interpretation. The choice of method employed in weighting and aggregation is ultimately dependent on the nature and scope of the particular study.

Composite indices also need to be validated. Only through continued validation and adjustment resulting from constructive debate can indices be improved. During validation adjustments are effected in selection, scaling, weighting and aggregation in order to improve the quality of the final estimates. Validation is normally performed by using either item analysis or external validation.

The safe use of the composite requires proper evidence that the composite will provide reliable results. If the user simply does not know, or is not sure about the testing and certification of the composite, then composite's quality is low. A notational system called NUSAP (an acronym for five categories: Numeral, Unit, Spread, Assessment, Pedigree) can be used to characterise the quality of quantitative information based in large part on the experience of research work in the matured natural sciences (Funtowicz and Ravetz, 1990). One category of NUSAP, the pedigree, is an evaluative description of the procedure used to build the composite indicator.

4. Composite Indicators for Sustainability

The construction of (composite) indicators involves making choices. This introduces issues of uncertainty such as selection of data, imprecision of the data, data imputation methods, data normalisation, weighting schemes, weights' values and aggregation methods.

Composite indicators are an innovative approach to evaluating sustainable development (defined as non-declining welfare over the long-term). Computing aggregate values is a common method used for constructing indices. An index can be either simple or weighted depending on its purpose. Indices are very useful in focusing attention and, often simplify the problem (Atkinson et al., 1997). Such an approach allows for the evaluation of a multitude of aspects, which can then be deciphered into a single comparable index.

It is frequently argued that composite indicators are too subjective, due to the assumptions in estimating the measurement error in data, mechanism for including or excluding indicators in the index, transformation and/or trimming of indicators, normalisation scheme, choice of imputation algorithm, choice of weights and choice of aggregation

system. A combination of uncertainty and sensitivity analysis can help to gauge the robustness of the composite indicator, to increase its transparency and to frame policy discussions. Sensitivity analysis is the study of how output variation in models such as a composite indicator can be apportioned, qualitatively or quantitatively, to different sources of variation in the assumptions.

Composite indicators are based on *sub-indicators that have no common meaningful unit of measurement* and there is *no obvious way of weighting these sub-indicators*.

Deciding on the phenomenon to be measured and whether it would benefit from the use of composite indicators.

Selection of sub-indicators. A clear idea is needed of which sub-indicators are relevant to the phenomenon to be measured.

Assessing the quality of the data. There needs to be high quality data for all the sub-indicators, otherwise the analyst has to decide whether to drop the data or find ways of constructing the missing data points. In case of data gaps, alternative methods could be applied, e.g. mean substitution, correlation results, time series, and assess how the selection of the method can affect the final result.

Assessing the relationships between the sub-indicators. Methods such as Principal Components Analysis can provide insight into the relationships between the sub-indicators. It can be considered as prerequisite for the preliminary analysis of the sub-indicators.

Normalising and weighting of the indicators. Many methods for normalising and weighting the sub-indicators are reported in the literature. The selection of the appropriate methods depends on the data and the analyst.

Testing for robustness and sensitivity. Inevitably changes in the weighting system and the choice of sub-indicators will affect the results the composite indicator shows. However, it is important to test the degree of sensitivity of the country rankings to avoid basing policy messages on rankings which are highly sensitive to small changes in the construction of the composite indicator. The values of the composite indicator should be displayed in the form of confidence bounds.

The various methods of aggregation are multiple linear regression models, principal components analysis, and factor analysis, cronbach alpha, neutralization of correlation effect, efficiency frontier, distance to targets, experts opinion (budget allocation), public opinion, and analytic hierarchy process (Nardo et al., 2005).

The various methods for calculating the composite indicators are shown in Table 2.

Recent initiatives include the development of aggregate indices, headline indicators, goal-oriented-indicators, and green accounting systems. Some of the early composite indices include Measure of Economic Welfare (MEW) by Nordhaus and Tobin (1973), Index of Social Progress (ISP) by Estes (1974), Physical Quality of Life Index (PQLI) by Morris (1979), and Economic Aspects of Welfare (EAW) by Zolotas (1981), Brekke (1997).

Indices developed in the 1990s to measure the aggregate performance of the economy or the sustainability include Human Development Index (HDI) by the UNDP (1990), Sustainable Progress Index (SPI) by Krotscheck and Narodowski (1994), Ecological Footprint by Wackernagel and Rees

Table 2 – Methods for calculating composite indicators (CIs) (OECD, 2002a,b)

Method	Equation
1. Sum of country rankings	$CI_c^t = \sum_{i=1}^N Rank_{ic}^t$
2. Number of indicators above the mean minus the number below the mean	$CI_c^t = \sum_{i=1}^N \text{sgn} \left[\frac{x_{ic}^t}{x_{EUI}^t} - (1 + p) \right]$
3. Ratio or percentage differences from the mean	$CI_c^t = \frac{\sum_{i=1}^N w_i y_{ic}^t}{\sum_{i=1}^N w_i}$, where $y_{ic}^t = \frac{x_{ic}^t}{x_{EUI}^t}$
4. Percentage of annual differences over consecutive years	$CI_c^t = \frac{\sum_{i=1}^N w_i y_{ic}^t}{\sum_{i=1}^N w_i}$, where $y_{ic}^t = \frac{x_{ic}^t - x_{ic}^{t-1}}{x_{ic}^t}$
5. Standardized values	$CI_c^t = \frac{\sum_{i=1}^N w_i y_{ic}^t}{\sum_{i=1}^N w_i}$, where $y_{ic}^t = \frac{x_{ic}^t - x_{EUI}^t}{\sigma_{EUI}^t}$
6. Re-scaled values	$CI_c^t = \frac{\sum_{i=1}^N w_i y_{ic}^t}{\sum_{i=1}^N w_i}$, where $y_{ic}^t = \frac{x_{ic}^t - \min(x_i^t)}{\text{range}(x_i^t)}$

Note: x_{ic}^t is the value of indicator i for country c at time t . w_i is the weight given to indicator i in the composite index. In Method 2, p = an arbitrarily chosen threshold above and below the mean.

(1996), Material Input Per Service Unit (MIPS) by Schmidt-Bleek (1994), Index for Sustainable Economic Welfare (ISEW) by Daly and Cobb (1989) and Cobb (1989), Genuine Progress Indicator (GPI) by Cobb et al. (1995), Genuine Savings Indicator (GSI) by Hamilton (1999), Barometer of Sustainability by IUCN-IDRC (1995), and Environmental Pressure Indicators (EPI) by EU (1999).

The Consultative Group on Sustainable Development Indicators (CGSDI) at IISD as part of their effort to create ‘an internationally accepted sustainable development index’ produced the Dashboard of Sustainability, a performance evaluation tool, in 2001. More recently developed indices include Total Material Requirement by EEA (2001), Eco-efficiency Indices by WBCSD (1999), the Compass of Sustainability by At Kisson (2005), Environmental Sustainability Index (ESI) and Environmental Performance Index (EPI) by, WEF (2002).

Most of these indices are not used by policy-makers due to measurement, weighting and indicator selection problems. However, some of them are popular among different stakeholders. HDI, Ecological Footprint, ISEW, GPI and EPI have been computed by researchers for a number of countries under different assumptions due to the variation in data quality and availability.

In 1998 John Elkington, chairman of Sustainability, institutionalized the concept of the triple bottom line. Canada’s National Round Table on the Environment and the Economy (NRTEE) conducted one of the earliest studies on the development of sustainability metrics.

5. Overview of Sustainability Indices

The brief description of various indices and ratings are described below.

5.1. Innovation, Knowledge and Technology Indices

5.1.1. Summary Innovation Index

The Summary Innovation Index (SII) is part of the innovation scoreboard, which depicts achievements and trends, highlights strengths and weaknesses of Member States’ perfor-

mances, and examines European convergence in innovation (European Commission, 2001a). The innovation scoreboard analyses 17 indicators studied between 1995/1997 and 1999/2000 in four areas: (a) human resources; (b) knowledge creation; (c) transmission and application of new knowledge; (d) innovation finance, output and markets. The SII for a given country is equal to the number of indicators that are more than 20% above the EU overall mean, minus the number of indicators that are more than 20% below. The SII is adjusted for differences in the number of available indicators for each country. The index can vary between +10 (all indicators are above average) to –10 (all indicators are below average).

5.1.2. Investment in the knowledge-based economy

This composite indicator, built by DG RTD, aims to summarize various indicators of national investment in highly qualified human resources in science, technology, research and education, so as to measure a country’s capacity to create knowledge. The composite indicator combines seven indicators related to the number of researchers, the number of new doctors in science and technology (annual influx), domestic expenditure on R&D, expenditure on information technologies and imports of high-tech products. All sub-indicators are measured per capita to neutralize the effect of the size of the countries.

5.1.3. Performance in the knowledge-based economy

The second index related to the knowledge-based economy aims to measure a country’s performance in converting the new knowledge into economic and technological progress to increase both a country’s competitiveness and the well being of its citizens. The index combines six indicators: the number of EPO and USPTO patents, the number of publications, production of high-tech exports, the employment in the high-tech production and GDP per capita.

5.1.4. Innovation Index

The Innovation Index consists of three core components that combine between three and five underlying variables, mostly derived from OECD databases. The first core component (generation of new knowledge) aggregates variables such as basic

research as a percentage of GDP and non-business researchers as a share of the labour force. The second core component (*industry/science linkages*) looks at public/private links through data relating to R&D, the scientific content of patents, and publications. In the third component (*industrial innovation*), data on business research, patents and the introduction of new products and processes are used to measure private sector innovative performance.

5.1.5. National innovation capacity

The central objective of the index is to create a quantitative benchmark of national innovative capacity, which highlights the resource commitments and policy choices that most affect innovative output in the long run (Porter and Stern, 1999). Eight sub-indicators are selected: personnel employed in R&D, expenditures on R&D, openness to International Trade and Investment, strength of protection for intellectual property, share of GDP spent on secondary and tertiary education, GDP Per Capita, percentage of R&D Funded by Private Industry and percentage of R&D Performed by Universities.

5.1.6. Information and communication technologies

The index aims at providing an overall picture of a country's situation regarding development and application of information and communication technologies (Fagerberg, 2001). Five simple indicators (number of mobile telephones, number of Internet users, etc.) are used as components for the development of the composite indicator.

5.1.7. Technology Achievement Index

The Technology Achievement Index (TAI) is designed to capture the performance of countries in creating and diffusing technology and in building a human skill base (United Nations, 2001). The index uses data from 8 indicators grouped in four dimensions:

- Technology creation as measured by the number of patents granted to residents per capita and by receipts of royalties and license fees from abroad per capita.
- Diffusion of recent innovations, as measured by the number of Internet hosts per capita and the share of high- and medium-technology exports in total goods exports.
- Diffusion of old innovations, as measured by telephones (mainline and cellular) per capita and electricity consumption per capita.
- Human skills, as measured by mean years of schooling in the population aged 15 and above and the gross tertiary science enrolment ratio.

5.1.8. General Indicator of Science and Technology

The National Institute of Science and Technology Policy of Japan (NISTEP) created the General Indicator of Science and Technology (GIST) with a view to grasp major trends in Japan's Science and Technology activities and make possible comprehensive international comparisons and time-series analysis (NISTEP, 1995). NISTEP starts with 13 indicators, five of which are classified as "input" and eight as "output". The cluster of inputs includes: "R&D expenditure", "R&D scientists/engineers", "Bachelor's of Science degrees conferred", "Bachelor's of Engineering degrees conferred", and "technol-

ogy imports". As output are considered: "scientific papers", "scientific paper citations", "domestic patents", "external patents", "patent citations", "product output", "high-tech product output" and "technology exports".

5.1.9. Success of software process improvement

The index aims at combining the conditions (e.g., organisation and funding of improvement efforts) that can explain the successes and failures of software process improvement efforts (Emam et al., 1998). A set of 14 variables is considered as having a significant impact on the software process improvement.

5.2. Development Indices

5.2.1. Human Development Index

The Human Development Index (HDI) of the United Nations is a summary measure of human development in three basic dimensions: a long and healthy life, knowledge and GDP per capita (United Nations, 1990). The three base components of the HDI are: (a) life expectancy at birth, (b) adult literacy rate (with two-thirds weight) and the combined primary, secondary and tertiary gross enrolment ratio (with one-third weight) and (c) GDP per capita (PPP US\$). The indices are formulated based on minimum and maximum values (goal posts) for each indicator and performance in each dimension is expressed as a value between 0 and 1.

5.2.2. Index of sustainable and economic welfare

The index of sustainable and economic welfare (ISEW) is one of the most advanced attempts to create an indicator of economic welfare, developed by the Centre for Environmental Strategy (CES) and the New Economics Foundation (NEF). The main objective is to measure the portion of economic activity that delivers welfare to people. It aims further to replace GDP as an indicator of progress, because GDP is likely to lead in the wrong direction given that it does not distinguish between activities that improve or directly damage the quality of life (CES, 2000). The set of 20 sub-indicators includes seven economic activities that deliver welfare to people, such as adjusted consumer expenditure, services from domestic labour, from consumer durables, from streets and highways, public expenditure on health and education, net capital growth and net change in international position. On the other hand, the 13 indicators that "reduce" the welfare are: consumer durables (difference between expenditure and value of services), defensive private expenditures on health and education, costs of commuting, of personal pollution control, of automobile accidents, of water pollution, of air pollution, of noise pollution, loss of natural habitats, loss of farmlands, depletion of non-renewable resources, costs of climate change and costs of ozone depletion (Guenno and Tizzi, 1998).

5.2.3. Relative intensity of regional problems in the Community (by the EC)

Back in 1984 the European Commission (EC) constructed a synthetic index measuring the "relative intensity of regional problems in the Community" (Commission of the European Communities, 1984). The objective of the Index is to assist the Community regional policy to focus on strengthening the

economic performance of regions experiencing delayed development. The Commission, with a view to measure the relative intensity of the regional problems at Community level in a global and synthetic way, uses three sub-indicators: GDP per employed in ECU, GDP per head in PPS, and unemployment rate.

5.3. Market- and Economy-based Indices

5.3.1. Internal Market Index

The objective of the Internal Market Index is to measure whether the “real world” benefits, that the Internal Market Strategy attempts to bring to the citizens and companies, are effectively delivered (European Commission, 2001b). Nineteen variables are synthesized in the Index, including growth in per-capita income, long-term unemployment, price dispersion, growth in intra-EU trade, prices of utilities services, availability of venture capital, energy intensity and greenhouse gas emissions.

5.3.2. Business Climate Indicator

To improve the understanding of the business cycle in the European area as a whole DG ECFIN has formulated a composite indicator based on business surveys designed to deliver a clear and early assessment of the cyclical situation within the area (European Commission, 2000). The five sub-indicators are related to the responses of national business surveys and available only from 1985 onwards: production trends in recent past, order books, export order books, stocks and production expectations. Each series therefore varies by construction between –100 (indicating that all firms have reported a deterioration) and +100 (all firms have noted an improvement).

5.3.3. European Labour Market Performance

The objective of the composite index is to monitor labour market performance using many of the Basic Performance Indicators that are used in the benchmarking process according to the Amsterdam Treaty (Storrie and Bjurek, 1999). For illustration purposes, three measures of unemployment from the Commission's Basic Performance Indicators are benchmarked. The three single indicators are: the unemployment rate, the long-term unemployment rate and the youth unemployment ratio.

5.3.4. Composite Leading Indicators

The OECD Composite Leading Indicators (CLIs) are based on individually selected leading indicators for each country and are calculated for 22 Member States (Nilsson, 2000). They aim at providing a cyclical business indicator with better forecasting and tracking qualities than any of its individual components. The OECD CLI's are based on individually selected leading indicators for each country (OECD, 2002a,b).

5.3.5. Genuine Savings (GSs)

Pearce and Atkinson (1993) put forward an index which is based on the Hicksian income concept. The genuine savings (GS) are thus an indicator of weak SD. The societal capital stock consists of produced capital, human capital (knowledge, skills, etc.) as well as natural capital (resources, etc.). As in the

ISEW all values are monetarized, such that aggregation is again achieved by simply adding up.

5.3.6. Economic Sentiment Indicator

The Economic Sentiment Indicator of the European Commission (EC ESI) combines business tendency surveys into a single cyclical composite or confidence indicator, with a view to reduce the risk of false signals and to provide a cyclical indicator with better forecasting and tracking qualities than any of its individual components (Nilsson, 2000). A standard set of four components is used, mainly based on qualitative data from business or consumer tendency surveys. The EC ESI combines the following component series: (a) industrial confidence indicator; (b) construction confidence indicator; (c) consumer confidence indicator; (d) share price index.

5.3.7. Green Net National Product (EDP) and SEEA

The Green Net National Product or likewise the Environmentally Adjusted Net Domestic Product (EDP) has been developed within the scope of SEEA (System of Integrated Environmental and Economic Accounting—UNEP, 2000 and UN, 2003). Following inter alia Hanley (2000) three different versions of the EDP can be distinguished: (i) the EDPI which subtracts depreciations of natural resources caused by their extraction from the net national income (NNI), (ii) the EDPII, which subtracts from the NNI the costs necessary to reach the same state of the environment at the end of the period as existed at the beginning of the period, and (iii) the EDPIII, which subtracts the costs of environmental pressure and destruction (calculated by willingness-to-pay methods). Again aggregation takes place by simply adding up the monetarized values.

5.4. Eco-system-based Indices

5.4.1. Sustainability Performance Index

The SPI is based on an operationalized form of the principle of sustainability. It uses only process data known at an early stage of planning and data of natural concentrations of substances (not on their presumable impact which is usually not known). The core of the SPI evaluation is the calculation of the area needed to embed a process completely into the biosphere (Narodoslawsky and Krotscheck, 2004). This comprises the area required for production of raw material, process energy and provided installations as well as the area required for the staff and for the accumulation of products and by-products within the available area (Lundin, 2003).

5.4.2. Eco-Index Methodology

The eco-index methodology developed by Best Foot Forward (Chambers et al., 2000) utilizes a ‘component’ or bottom-up approach to perform EF analysis. It is compatible with the ‘compound’ top-down approach which uses international trade statistics as a starting point. In the eco-index methodology full life cycle impact data is used to derive EF conversion factors wherever possible for key component. The ecological footprint (as measured using global average yields) is normalised by the application of equivalence factors.

5.4.3. Living Planet Index

The global biodiversity indicator Living Planet Index was developed by WWF (1998). It measures trends in over 2000 populations of more than 1100 species of vertebrates in terrestrial, freshwater, and seawater ecosystems. The LPI provides a sub-index for the three spheres: for every species within a sphere, the ratio between its populations in pairs of consecutive years is calculated. The geometric mean of these quotients of different species multiplied with the index value of the former year then delivers the biodiversity index for the respective sphere (1970 serves as a base-year with the index value for 1970 scaled to unity). The geometric mean of these indices is the LPI.

5.4.4. Ecological Footprint (EF)

The ecological footprint (EF) (Wackernagel and Rees, 1997) is based on the quantitative land and water requirements to sustain a (national) living standard into infinity thereby assuming certain efficiency improvements. The ratio of required resources to available resources is interpreted as a measure of ecological sustainability: ratios exceeding one are seen as unsustainable, i.e. contemporary living standards would violate the principles of sustainable development. Calculation of the EF is based on data from national consumption statistics. Thus, the EF primarily relies on normalisation (as any consumption is converted in land use). Weighting is rather implicit in the conversion parameter and aggregation is done by adding up all land and water requirements. There are several approaches similar to the EF, e.g. the MIPS (Material-Input-Per-Service) concept (Schmidt-Bleek, 1994), Gassner and Narodoslawsky, 2004) or the Ecoindex™ (Chambers and Lewis, 2001).

5.5. Composite Sustainability Performance Indices for Industries

5.5.1. Composite sustainable development index

Krajnc and Glavic (2005) collected and developed a standardized set of sustainability indicators for companies covering all main aspects of sustainable development. A composite sustainable development index (I_{CSD}) in order to track integrated information on economic, environmental, and social performance of the company with time. Normalised indicators were associated into three sustainability sub-indices and finally composed into an overall indicator of a company performance. This was applied by determining the impact of individual indicator to the overall sustainability of a company using the concept of analytic hierarchy process.

5.5.2. Composite Sustainability Performance Index

The composite sustainability performance index (CSPI) is an attempt to develop a measure of corporate citizenship and to critically evaluate how well a company stands up to its policies and commitments regarding sustainable development. This model enables industry to identify the key sustainability performance indicators and provides framework for aggregating the various indicators into the CSPI (Singh et al., 2007). The calculation of CSPI is a step-by-step procedure of grouping various basic indicators into the sustainability sub-index for each group of sustainability indicators. Sub-indices then

subsequently derived in the form of aggregated index. Weights are derived using AHP methodology. Liberator scoring and Z score method were employed for aggregation of indicators. The model has been evaluated based on the real-time application for a steel industry. CSPI with its sub-indices for each dimensions of sustainability were evaluated for the time period of 4 years.

5.5.3. ITT Flygt Sustainability Index

ITT Flygt Sustainability Index suggests a method for measurement of corporate contribution to sustainable development, looking at how well a company stands up to its policies and commitments regarding sustainable development. This index is developed and calculated for ITT Flygt AB over a 3 years period (2002–2004). The index structure is based on scientific literature and interviews with ITT Flygt and four other engineering companies. The purpose of the index is to support corporate sustainability-management. The index is calculated by aggregating some 40 sustainability-indicators. These indicators are individual to each company and are designed to measure the significant sustainability aspects of the company (Pohl, 2006).

5.5.4. G Score method

“G score” that consists of five categories, namely general environmental management (GEM), input, process, output, and outcome. G score is a proxy measure of corporate environmental performance based on voluntary environment, health, and safety (EHS) report and is calculated by aggregating the points of the above five-categories (Jung et al., 2001).

5.6. Investment, Ratings and Asset Management Indices

5.6.1. Sustainable Asset management (SAM) Zurich, Switzerland (www.sam-group.com)

This serves as an in-house department for the investment company Sustainable Performance Group (founded by Swiss Re, Volkart Brothers Group and SAM), but also assesses companies for external clients such as Credit Suisse Eco-Efficiency Fund. Their approach is to ‘invest worldwide in companies which have committed themselves to sustainability: in companies which, successfully integrate their economic, ecological and social interests into the way they conduct their business, are able to recognise opportunities and risks early and thus create for themselves long-term, sustainable competitive advantages, and achieve above-average profitability. The assessment involves looking at a company’s ‘sustainability chances’ (its strategic chances; product; corporate sustainability), and its ‘sustainability risks’ (stakeholder exposure; environmental management; resource efficiency; strategic risks; sustainability costs). In total, more than 100 criteria are used for the rating. Together with the Dow Jones indices, SAM recently launched a series of sustainability indices. The global index contains 225 components, selected from the Dow Jones global index of 2000 blue chip companies.

5.6.2. Dow Jones sustainability group indices (DJSI), US (www.sustainability-index.com)

The DJSI and the SAM Sustainability Group created the first collection of global sustainability indices in September 1999.

The DJSGI allows for the benchmarking of the performance of investments in sustainability companies and funds. It tracks the performance of the top 10% of the companies in the Dow Jones global index that lead the field in sustainability. The criteria by which the sustainability companies are identified and ranked are based on five 'sustainability' principles (Dow Jones/SAM 2007):

- technology: innovative technology and organisation that uses financial, natural and social resources efficiently, effectively and economically;
- governance: high standards of corporate governance including management responsibility, organisational capability, corporate culture and stakeholder relations;
- shareholders: demands should be met by sound financial return, long-term economic growth, long-term productivity increases, sharpened global competitiveness and contributions to intellectual capital;
- industry: lead an industry shift towards sustainability by demonstrating commitment and publishing superior performance;
- society: encourage lasting social well-being by appropriate and timely responses to social change, evolving demographics, migratory flows, shifting cultural patterns and the need for continuing education.

The criteria facilitate a financial quantification of sustainability performance by focusing on a company's pursuit of sustainability opportunities, and reduction and avoidance of sustainability risks and costs. Each company's sustainability performance is given a score, and the companies are ranked according to their score.

5.6.3. Bovespa Corporate Sustainability Index

The Bovespa Corporate Sustainability Index (Índice de Sustentabilidade Empresarial—ISE) is the index tracking the economic, financial, corporate governance, environmental and social performance of leading companies listed in the São Paulo Stock Exchange. It is based on the triple bottom line (TBL) concept, which evaluates the economic-financial, social, and environmental elements in an integrated manner. The economic-financial, social, and environmental dimensions were divided into four groups of criteria: policies (commitment indicators); management (indicating plans, programs, goals, and monitoring); performance; and legal compliance (with environmental and consumer regulation, among others).

5.6.4. Benchmarking US petroleum refineries, the Environmental Defence Fund (EDF), US NGO

Ranking environmental performance of 166 oil refineries. Publicly available data on toxic waste generation and pollutant release was normalised by refinery capacity to adjust for size (Ditz and Ranganathan, 1997).

5.6.5. ECCO-CHECK Index, Environmental Risk Rating Ltd., Surrey, UK

Described as a fully commercial index of corporate environmental performance in Europe, with the aim of providing definitive information about a company's potential liability under key elements of site-specific UK legislation.

5.6.6. Investor Responsibility Research Centre (IRRC), Washington, DC, US (www.irrc.org)

It produces a corporate environmental profile directory consisting of a series 60 of indicators of emissions (total weight of corporate toxic release inventory emissions), volume of oil spill, volume of chemical spill, hazardous waste (number of superfund national priority list sites), compliance (punitive fines for environmental non-compliance), environmental litigation (number of disclosed environmental litigation incidents) normalised by considering 'environmental risk per unit revenue', enabling comparisons of companies of different sizes.

5.6.7. Council on Economic Priorities (CEP), New York, US (www.cepnyc.org)

CEP is a public service research organisation, providing reports that rates companies' environmental performance. Ethical factors, such as charitable giving, community outreach, family benefits and workplace issues are also assessed. Thirteen areas of corporate environmental performance are evaluated: releases, policy, packaging, office recycling, raw materials/waste, toxic reduction, community impact, energy conservation, natural resources, accidents, superfund sites, compliance and environmental technologies.

5.6.8. Oeko Sar Fund, Bank Sarasin and Cie, Basel, Switzerland (www.sarasin.ch)

The bank assesses environmental performance for its own environmental fund (DEM 64 million). The assessment system was developed by environmental consultant Ellipson Ltd. in Basel and is the same as the system used by Norwegian UNI Storebrand (also designed by Ellipson). The categories used for environmental and social ratings are Policy/strategy, Production/provision of service, Products/services, Environmental management systems, Customers/suppliers, Employee relations, Public relations and Shareholders/investors.

Companies are divided into three groups according to the potential environmental impact: high (e.g. an energy producer), medium and low (service sector companies). To be included in the fund, the company must attain a certain level of rating depending on the impact group. In addition, negative criteria are used, avoiding any company that drives more than 5% from the defence industry, nuclear power and nuclear power plant construction, gene technology, chlorine industry, agrochemical and automobile industries. Assessment is based on CERs, annual reports and other material from the companies, management interviews, a newspaper article database, information from environmental pressure groups such as Greenpeace, and a questionnaire.

5.6.9. Storebrand Scudder Environmental Value Fund, Oslo, Norway (www.storebrand.no)

The Storebrand Scudder environmental investment fund was set up in 1996 by the Norwegian insurers, UNI Storebrand. It uses a proprietary sustainability index to assess business environmental performance. The index is calculated from environmental indicators of: global warming, ozone depletion, material efficiency, toxic release, energy intensity, water use, environmental liabilities, and environmental management

quality. Storebrand uses the index to measure the ‘environmental dividend’—the difference between the fund’s environmental performance and the market on average. Although termed a sustainability index it only focuses on environmental performance, and does not include social issues.

5.6.10. Innovest strategic value advisors (www.innovestgroup.com)

This is based in the United States and uses a proprietary investment model ‘Eco Value 21’ to evaluate both the environmental risk and opportunity profiles of companies and determine the implications for investors. This analysis of the upside potential is a unique facet of the rating. It too can provide a fund rating as well as a customized portfolio analysis on both US and Canadian stocks.

5.6.11. OEKOM Environment Rating

In 1993 oekom research AG, an international supplier of environmental research studies based in Munich, established an Environmental-Rating, which has since been continuously improved. Since 1994 oekom has used this method to analyse and assess over 400 companies quoted on various stock markets worldwide. The research process of an Environmental-Rating is divided into three steps. First, the relevant ecological and industry-specific assessment criteria have to be defined; for example, with the automobile industry oekom has applied the following criteria divided into three separate rating areas:

Environmental management

- Environmental goals/environmental managers
- Environmental management systems/environmental audits/environmental programmes/ecological balance sheet
- Environmental standards used in overseas operations
- Partnerships/training and personnel/environmental office management
- Suppliers/transport and logistics

Products and services

- Reduction of emissions and resource use
- Development of efficient engines and alternative drive systems
- Durability
- Re-usability/suitability for recycling
- Take-back of products and recycling capacities
- Avoidance of toxic substances
- Use of environmentally compatible materials

Environmental benchmarks

Analysis of the following information in relation to turnover, output or number of employees:

- Energy and water consumption
- Air pollution, e.g. CO₂, NO_x, SO_x, dust
- Water pollution
- Quantity of waste and its composition, e.g. proportion of recyclable raw
- Materials, proportion of hazardous waste

Each rating area is given a grade on a scale from A+ to D– based on the ecological activities within the area:

- A+. The company’s environmental activities are especially progressive within the industry.
- D–. The company focuses on complying with environmental regulation but shows little or no further environmental commitment.
- The three rating areas are weighted according to the specific industry after which the separate grades are brought together to form the overall rating.

5.6.12. Jupiter Income Trust Funds (subsidiary of Jupiter Tyndall Group PLC), UK (www.jupiteronline.co.uk)

This is a fund management service, with eight UK unit trusts, and 11 investment trusts especially created to pursue environmental and financial objectives. They use very substantial investment criteria to assess companies and avoid companies that derive more than 1% from oppressive regimes, or armaments, nuclear or tobacco industries.

5.6.13. FTSE Good Index

The FTSE4Good Index Series has been designed to measure the performance of companies that meet globally recognised corporate responsibility standards, and to facilitate investment in those companies. The FTSE4Good selection criteria have been designed to reflect a broad consensus on what constitutes good corporate responsibility practice globally. Using a widespread market consultation process, the criteria are regularly revised to ensure that they continue to reflect standards of responsible business practice, and developments in socially responsible investment as they evolve.

5.7. Product-based Sustainability Index

5.7.1. Life Cycle Index

Life cycle index (LInX) is an indexing system that incorporates the life cycle attributes of process and products in decision-making. Its purpose is to aid the selection and design of processes and products. LInX is comprised of environment, cost, technology, and socio-political factors. For environmental index—one where all the targets have to be met separately (fixed) and one where trade-offs between different impacts are allowed (flexible). The flexible model offers more freedom in reaching the target, but does this at the cost of increased need for preference information collection and modeling. In practice, both the fixed and the flexible models can be included in the index development so that for certain impacts, targets would be given separately, whereas the rest of the impacts would be aggregated and the target for them would be given in terms of the aggregated impact (Khan et al., 2004).

5.7.2. Ford of Europe’s Product Sustainability Index

Ford of Europe’s Product Sustainability Index (PSI) is a sustainability management tool directly used by engineering, i.e. not by sustainability or life cycle experts. PSI is looking at eight indicators reflecting environmental (Life Cycle Global Warming Potential, Life Cycle Air Quality Potential, Sustainable Materials, Restricted Substances, Drive-by-Exterior-

Noise), social (Mobility Capability, Safety) and economic (Life Cycle Cost of Ownership) vehicle attributes.

5.8. Sustainability Indices for Cities

5.8.1. Urban Sustainability Index

The urban sustainability index (USI) developed by Zhang (2002) based on 22 individual indicators in the context of urban China. These indicators were chosen from a sustainability indicator database (with 387 indicators) through three rounds of extensive consultation of experts using the pre-coded questionnaires. Total urban sustainability score is based on three components of the urban sustainability scores and each of the three components is based on a number of individual indicators. All the inputs into the urban sustainability have been weighted, based on the analytical hierarchy process (AHP) method and experts consultation. Overall urban sustainability consists of three dimensions: the dimension of urban status, the dimension of urban coordination and the dimension of urban potential. These dimensions capture the three key points of urban sustainability: the urban development capacity, urban coordination capacity and urban development potential. The score of USI is the weighted sum of scores of the three components of the urban sustainability index. The score of each of the three components of the urban sustainability index is the weighted sum of scores of the relevant subcomponents of the urban sustainability. Theoretically, the score on the urban sustainability index varies from 0 to 1.

5.8.2. Sustainability Index for Taipei

This study was carried out for Taipei city. After considering the characteristics of Taipei, Taiwan, discussions with experts, scholars and government departments and an exhaustive literature review, this study selected 51 sustainability indicators corresponding to the socio-economic characteristic of Taipei city. Indicators are classified into economic, social, environmental and institutional dimensions. Furthermore, statistical data is adopted to identify the trend of SD from 1994 to 2004. Moreover, the sustainability index is calculated for the four dimensions and for Taipei as a whole. This study applies standard deviation as the basic method for calculating the sustainability index. It standardizes indicator values so that each standardized value falls between 0 and 1. Study applies the equal weight method for initial integration and analysing overall sustainability trend.

5.8.3. City Development Index

The City Development Index (CDI) suggested by the United Nations Centre for Human Settlements (HABITAT) consists of five sub-indices: (i) an infrastructure index, which builds on four (equally weighted) indicators as percentages of households which are connected to clean water, canalization, electricity and a phone network (without mobiles), (ii) a twofold (equally weighted) waste index, which is composed of the percentage of untreated sewage in total wastewater and the percentage of disposal of solid waste in total solid wastes.

5.8.4. Compass Index of Sustainability

The compass index of sustainability developed for Orlando, Florida by AtKisson Inc. They used a simple averaging method for indicators clustered in four categories—Nature (N), Economy (E), Society (S) and Well Being (W) corresponding to the four points on a compass. Indicators were scaled on a 0–100 performance scale. Scales were set by normative judgments. Each indicator has equal weight (Atkinson et al., 1997).

5.8.5. The Sustainability Cities Index

Forum for the future chose three baskets of indicators against which to rank the cities of Britain:

- The Environmental Impact of the city—the impact of the city on the wider environment in terms of resource use and pollution.
- The Quality of Life for residents—what the city is like to live in for all its citizens.
- Future Proofing—how well the city is preparing itself for a sustainable future.

These index categories were selected to reflect the sustainability of each city in a fair and balanced way considering 13 indicators.

5.8.6. Ecosistema Urbano Performance Index

Ecosistema Urbano is a project started in 1994 that has developed a well-established system of 20 environmental indicators and tests it since 10 years on the 103 main Italian municipalities. The project evaluates the resources quality and the management and environmental protection. Indicators are used to evaluate the sustainability of these cities and how much the economic activities and modern lifestyles affect environmental resources and how good are the actions implemented as an answer to this pressure. It allows to organise cities environmental data in order to identify a sustainability evaluation criteria and an environmental performance benchmarking.

5.8.7. Sustainable Seattle: developing Indicators of Sustainable Community

Confronted with the health problems of the city, community leaders from different areas of Seattle city agreed to the idea of citizens choosing their own ways of measuring long-term community well being. Based on a consultative process, a set of 40 indicators has been proposed for 1998 covering various issues like environment, population and resources, economy, youth and education, health and community.

5.9. Environmental Indices for Policies, Nations and Regions

5.9.1. Environment Sustainability Index

The 2002 environmental sustainability index (ESI) is a measure of the overall progress towards environmental sustainability developed for 142 countries. The ESI is based upon a set of 68 basic indicators. These are then aggregated to construct 21 core indicators. The Environmental Sustainability Index value for each economy is simply the average value for the 21 factors. For every variable in our data set we created a

normalised range and scaled values from 0 (low sustainability) to 100 (high sustainability) (WEF, 2002).

5.9.2. Environment Quality Index

The main environmental factors are selected and defined on the basis of the multiattribute-utility theory and a numerical evaluation carried out by applying the Analytic Hierarchy Process (AHP) methodology (Saaty, 1980). A weighted sum of all environmental factors forms the so-called environmental quality index (EQI), which gives an estimate of the overall environmental impact of each alternative (Bisset, 1988). Each environmental factor is interpreted as a linear utility function, which assumes values in the range 0–10. The utility functions are given the weights according to the importance of each environmental factor, and the weighted sum is the environmental quality index for which a maximum is sought.

5.9.3. Concern about environmental problems

The index proposed by Parker aims to measure the concern of the public on certain environmental problems (Parker, 1991). Eleven indicators are considered, four related to air problems (nitrogen oxides, sulphur dioxide, carbon dioxide and particulates), two indicators associated with water problems (bathing and fertilizers) and five landscape-related indicators (population change, new dwellings, tourism, traffic and waste).

5.9.4. Index of Environmental Friendliness

The model for the Index of Environmental Friendliness is a general model for the aggregation of direct and indirect pressure data to problem indices and further to an overall Index of Environmental Friendliness. The scope of the model is designed to cover the key environmental problems of greenhouse effect, ozone depletion, acidification, eutrophication, ecotoxicological effect, resource depletion, photo-oxidation, biodiversity, radiation and noise (Puolamaa et al., 1996).

5.9.5. Environmental Policy Performance Indicator (by Adriaanse A., the Netherlands)

The composite indicator aims to monitor the trend in the total environmental pressure in the Netherlands and indicate whether the environmental policy is heading in the right direction or not (Adriaanse, 1993). Six theme indicators (composed of several simple indicators) are combined, including: (a) change of climate, (b) acidification, (c) eutrophication, (d) dispersion of toxic substances, (e) disposal of solid waste, and (f) odour and noise disturbance.

5.9.6. Environmental Performance Index

Complementary to the ESI which focuses on the environmental dimension of sustainability, “the EPI addresses the need for a gauge of policy performance in reducing environmental stresses on human health and promoting ecosystem vitality and sound natural resource management. The EPI focuses on current on-the-ground outcomes across a core set of environmental issues tracked through six policy categories for which all governments are being held accountable” (Esty et al., 2006). All variables are normalised in a scale from 0 to 100. The maximum value of 100 is linked to the target, the minimum value of 0 characterises the worst competitor in the field. Weights are drawn from statistical mechanisms or by

consulting experts. Finally, the six policy categories are aggregated to the ESI taking the weighted sum.

5.9.7. Environmental Vulnerability Index

The environmental vulnerability index (EVI) comprises 32 indicators of hazards, 8 indicators of resistance, and 10 indicators that measure damage (SOPAC, 2005). The EVI scale for normalisation ranges between a value of 1 (indicating high resilience/low vulnerability) and 7 (indicating low resilience/high vulnerability). The 50 indicators are given equal weights and then aggregated by an arithmetic mean (EVI, 2005).

5.9.8. Two “synthetic environmental indices”

In the review paper of Isla M., two composite indicators (one structural and one functional) are developed aiming to assist the local municipalities of Barcelona to monitor and evaluate their environmental performance (Isla, 1997). Twenty-two sub-indicators for environment are combined into two synthetic indices, a structural and a functional one.

5.10. Environment Indices for Industries

5.10.1. Eco-Points

A number of eco-points schemes have been developed, Eco-points scores within Eco-Scan are based on a ‘distance to target’ methodology. The underlying premise is that there is a correlation between the seriousness of an effect and the distance between the current level and the target level to achieve sustainability. They are similar in that they cover all life cycle stages—production, distribution, use and end-of-life. For each stage, the user selects the appropriate materials, processes, usage, and transportation details from the options which are provided in the software. The package then calculates an “eco-score” for each of these elements, based on a number of points for a given quantity or usage. Three separate databases, viz Eco-indicator 95, Idemat 96, Eco-indicator 97 of eco-points are provided with the Eco-Scan package, allowing users to select which they consider most appropriate to use (Pre Consultants, 2004).

5.10.2. Eco-compass

The eco-compass has been developed by Dow Chemical to provide a simple, visual summary of LCA data (Fussler and James, 1996). It is based on the indicators of eco-efficiency developed by the World Business Council for Sustainable Development (WBCSD), with some minor amendments (DeSimone and Popoff, 1997). The eco-compass has six ‘poles’ or dimensions:

- energy intensity
- mass intensity
- health and environmental potential risk
- resource conservation
- extent of re-valorization (re-use, re-manufacturing and recycling)
- service extension.

5.10.3. Eco-indicator 99

The Eco-indicator 99 is a state of the art, damage oriented impact assessment method for materials and processes,

Table 3 – Summary table of the sustainability indices

	Name	Number of sub-indicators	Scaling/normalisation	Weighting	Aggregation
1	Summary innovation, index	17	[+10 –10] mean subtraction	Equal weights	Number of indicators that are more than 20% above the European average minus the number of indicators which are more than 20% below and division by the total number of available indicators for each country
2	Internal Market Index	19	Percentage annual differences	PCA	Synthesis of variables using PCA
3	Business climate indicator	5	–100 to 100	PCA and FA	PCA applied to define weights. One principal component adopted as the composite indicator
4	Investment in the knowledge-based economy	7	Mean subtraction and division by the standard deviation	Choice of weights is up to the user	Weighted average
5	Performance in the knowledge-based economy	7	Mean subtraction and division by the standard deviation	Choice of weights is up to the user	Weighted average
6	Relative intensity of regional problems in the community	3	Mean subtraction and division by the standard deviation	Empirical weights are determined considering the degree of correlation between two sub-indicators	Neutralising the effect of correlation
7	Economic sentiment indicator	4	Dividing the month-to-month changes with the average month-to-month change	Equal weights	Summation
8	Composite leading indicators	Number varies across Member States	Mean subtraction and division by the mean of the absolute differences from the mean	Smoothing via “Months for cyclical dominance moving average”	Arithmetic average of the normalised indicators
9	Information and communication technologies	5	Country rankings for each indicator		Sum of rankings
10	Environmental sustainability index	68	Mean subtraction and division by the standard deviation	Equal weights	Arithmetic average of the normalised indicators
11	Human development index	3	[0, 1], using minimum and maximum value for each indicator as goal post	Equal	Arithmetic average of the scaled indicators
12	Technology achievement index	8 (grouped in 4 sub-indices)	[0, 1] using minimum and maximum value for each indicator as goal post	Equal	Arithmetic average of the 4 sub-indices
13	Overall health system attainment	5	[0, 100]	Weights based on survey of preferences of informed individuals	Summation
14	Two “Synthetic environmental indices”	22	Indicators are combined into 2 synthetic indices a structural and a functional one	Equal	Arithmetic average of the indicators
15	National innovation capacity	8	The logarithmic values of the sub-indicators are considered	Multiple regression model	Regression analysis employed
16	General Indicator of Science and Technology	13	FA/PCA was applied to define weights	PCA	PCA (primary principal component of each set)
17	Success of software process improvement	14	Subjective scale	PCA	–

18	European labour market performance	3	[0, 100] efficiency frontier (objective method)	Weight based on value judgement	–
19	Eco-indicator 99	3	Division by a reference value for each indicator	Weighting scheme is selected by a panel of experts	–
20	Concern about environmental problems	11	Dividing the value in each year by the value for the year for which each indicator is first available	Weights derived from public opinion polls	Sum of normalised weights multiplied by the corresponding normalised indicators
21	National Health Care systems performance	6	No standardisation	‘Budget allocation’ survey of 1000 people across the UK defined the weights for the indicators	Weighted average
22	Index of sustainable and economic welfare	20	Sub-indicators are expressed in monetary terms.	Equal. Allow the user to change the weightings and assumptions used in the index	Arithmetic average of the indicators
23	Index of environmental friendliness	11	Normalisation of problem indices by dividing the sectoral problem index by the value of the national problem index.	Subjective weights for the normalised problem indices are determined from experts by means of the Analytic Hierarchy Process.	Weighted sum
24	Environmental policy performance indicator	6 theme indicators (composed of several simple indicators)	Division by the corresponding (a) sustainability levels, and (b) policy targets	Equal	Sum of the six theme indicators
25	Living planet index	2000 populations of more than 11,000 species	Ratio to current and previous year	Equal weights	Geometric mean
26	Ecological footprint	6	Area	Equal	Summation
27	City development index	5	Distance from mean	PCA/experts	Weighted average
28	Environment performance index	Six policy categories	[0, 100]	PCA/experts	Weighted average
29	Environment vulnerability index	50	Aim = 1, worst = 7	Equal	Average
30	Well being index	87	[0, 100]	Subjective	Weighted average
31	Composite sustainability performance index	Five categories; 59 indicators	Distance from mean divided by standard deviation	AHP	Weighted average
32	Composite sustainable development index	Three categories; 38 indicators	Distance from maximum and minimum	AHP	Weighted average
33	Ford of Europe’s product sustainability index	8	Life Cycle Impact assessment	–	–
34	Genuine savings index	3 capitals	Monetized	Equal	Summation
35	Sustainability performance index	5	Area	Equal	Total area per unit product divided by area per capita
36	Compass index of sustainability	Four categories of indicators	[0, 100] normative judgement	Equal	Average
37	ITT Flygt sustainability index	40	[+10, –100]	Company opinion	Summation
38	Environment quality index	Based on multi-attribute utility theory	[0, 10], linear utility function	AHP	Weighted sum
39	Life cycle index	4 categories; 21 indicators	Linear and non linear functions	AHP	Geometric mean
40	G score	5 categories	Subjective	Equal	Summation
41	Index of sustainable society	5 categories; 22 indicators	Mathematical formula for each indicator	Equal	Summation

which has been developed by a large team of experts from 1997 to 1999 (Pré Consultants, 2000). The composite index, which is calculated via a user-friendly tool, aims to assist designers and product managers to improve products. The Eco-indicator 99 addresses three damage categories (end-points): (a) human health, (b) ecosystem quality and (c) resources, minerals and fossil fuels. Damages to human health are expressed as DALY (Disability Adjusted Life Years). Models have been developed for respiratory and carcinogenic effects, the effects of climate change, ozone layer depletion and ionising radiation. Damages to Ecosystem Quality are expressed as the percentage of species that have disappeared in a certain area due to the environmental load. Resource extraction is related to the quality of the remaining mineral and fossil resources.

5.10.4. *Environment Assessment for Cleaner Production Technologies*

Fizal (2007) developed an environmental assessment method for cleaner production technologies enabling quantitative analysis of environmental impact. The method is based on material and energy flows and uses a set of profile indices, including raw material, energy, waste, product and packaging profiles that describe all material and energy flows related to the technology under investigation. The indices are used as a basis for determining an integrated index for overall environmental assessment of cleaner production technologies. The presented method can be employed to evaluate environmental nuisance of implemented, modernised and modified technological processes and products as well to perform comparative analyses of alternative technologies.

5.10.5. *COMPLIMENT—Environment Performance Index for Industries*

Hermann et al. (2007) developed an analytical tool, called COMPLIMENT, which can be used to provide detailed information on the overall environmental impact of a business. COMPLIMENT integrates parts of tools such as life cycle assessment, multi-criteria analysis and environmental performance indicators. The methodology is based on environmental performance indicators, expanding the scope of data collection towards a life cycle approach and including a weighting and aggregation step. The method starts with the selection of EPIs to be calculated while taking into account the goal and scope definition of an LCA, followed by data collection, analysis and conversion and subsequently the classification, characterisation and normalisation steps. Carrying out classification, characterisation and normalisation result in a set of output data in the form of impact categories, such as global warming, acidification potential, eutrophication potential, ozone precursors and human health. Three sets of weights based on local, regional and national perspectives were developed using AHP analysis. As a next step in applying COMPLIMENT, the weights per impact category are multiplied by the normalised potential impacts per category. The resulting weighted impacts per category can then be added up to form an index of the normalised total potential environmental impact for each perspective.

5.11. *Energy-based Indices*

5.11.1. *Sustainability Assessment tool for Energy System*
Begic and Afghan (2007) performed multi-criteria sustainability assessment of various options of the energy power system. The rehabilitation of a 110 MW Thermal Power Unit is compared with other options, such as: a thermal power unit with a coal-fueled boiler with combustion in fluidized bed; combined cycle gas turbine plants; hydropower plant, power plants based on solar energy (photovoltaic [PV] systems); wind turbines; and biomass power plants. The assessment methodology comprise a system of stochastic models of uncertainty, enabling decision-makers to perform the assessment of various systems, as well as to obtain normalisation indexes by using non-numeric (ordinal), non-exact (interval) and non-complete information (NNN information).

Through the analysis of multi-criteria assessment of potential options, the decision-makers are able to evaluate options and select the optimal new power plant capacity.

5.11.2. *Energy Indicators for tracking Sustainability in Developed Countries*

In developed countries, the sustainability discussion is focused on environmental topics, while in developing countries the issues of poverty and equity are equally important. Consequently, for measuring sustainable development in a developing country, the inclusion of a poverty indicator in a set of lead indicators is essential. Moreover human activities and most sustainability issues are closely related to energy use, the energy system is a sound framework for providing lead indicators for sustainable development. Common energy-economic models enable the estimation of future states of the energy system. Kemmler and Spreng (2007) developed energy-based indicators of poverty which is quite relevant for social issues. The three energy measures that are used for the comparison are primary, useful, and an access-adjusted useful energy (all per capita). Poverty measures available in the NSSO data are total household expenditure, education level of the head of the household, calorie intake, source of drinking water, sanitation, house condition, dwelling area size, dwelling construction type and land possession.

5.12. *Social and Quality of Life-based Indices*

5.12.1. *Gender Empowerment Measure*

Focusing on women's opportunities rather than their capabilities, the GEM captures gender inequality in three key areas:

- Political participation and decision-making power, as measured by women's and men's percentage shares of parliamentary seats.
- Economic participation and decision-making power, as measured by two indicators—women's and men's percentage shares of positions as legislators, senior officials and managers and women's and men's percentage shares of professional and technical positions.
- Power over economic resources, as measured by women's and men's estimated earned income (PPP US\$).

Gender Empowerment Measure (GEM) and Gender-related Development Index (GMI) are also calculated as arithmetic means of three components. The components of each Index were first scaled to lie between 0 and 1 before computation (UNDP, 1996).

5.12.2. Physical Quality of Life Index

Morris (1979) also used the arithmetic mean to compute the physical quality of life Index (PQLI) from three indices—life expectancy index, infant mortality index and adult literacy rate. Ram (1982) applied principal component analysis and recomputed the PQLI.

5.12.3. Well-being Assessment (Well-Being Index—WI)

The well-being assessment by Prescott-Allen (2001) is based on the assumption that a healthy environment is necessary for healthy humans. Accordingly, the Well-Being Index (WI) is the arithmetic mean of a Human Well-being Index (HWI) and an Ecosystem Well-Being Index (EWI). The indices HWI and EWI in turn consist of five sub-indices. The HWI comprises a Health and Population, Welfare, Knowledge, Culture and Society, as well as an Equity Index. The EWI comprises indices for land, water, air, species and genes as well as for resources deployment. The five dimensions of the HWI are based on 36 indicators, those of the EWI on 51 indicators. The aggregation of these dimensions is conducted by a weighted arithmetic mean of further sub-indices or variables which are normalised again by a proximity-to-target approach using targets of related indicators.

5.12.4. National Health Care systems performance

The composite index aims to measure the performance of all 120 Health Authorities in England, Scotland and Wales with a view to reveal whether there is (a) variation in health care standards across the country, (b) gulf in the health of town and city dwellers, and (c) an important impact of poverty on the health service (King's Fund, 2001). Six sub-indicators were selected which cover various aspects of the performance of the National Health Care System: deaths from cancer, deaths from heart disease, total number of people on hospital waiting lists, percentage of people on waiting lists waiting over 12 months, number of hip operations and deaths from 'avoidable' diseases (e.g. TB, asthma, etc.).

5.12.5. Overall Health System Attainment

The World Health Organisation has developed a composite index that summarizes the performance of health systems in 191 countries, in terms of both the overall level of goal achievement and the distribution of that achievement, giving equal weight to these two aspects (WHO, 2000). Five components make up the index: overall good health, distribution of good health, overall responsiveness, distribution of responsiveness and fairness in financial contributions. Good health is measured by disability-adjusted life expectancy and the distribution of good health by an equality of child survival index.

5.12.6. Index for sustainable society

The recently developed Index for a sustainable society, the SSI, integrates for the sustainability and quality of life. The SSI

shows at a glance the level of sustainability of a country, what is going well and where improvements are urgently required.

The framework of the Index for a Sustainable Society consists of five categories, each built up from several indicators:

- Personal Development (Healthy Life, Sufficient Food, Sufficient to Drink, Safe Sanitation, Education Opportunities and Gender Equality).
- Clean Environment (Air Quality, Surface Water Quality and Land Quality).
- Well-balanced Society (Good Governance, Unemployment, Population Growth, Income Distribution and Public Debt).
- Sustainable Use of Resources (Waste Recycling, Use of Renewable Water Resources and Consumption of Renewable Energy).
- Sustainable World (Forest Area, Preservation of Biodiversity, Emission of Greenhouse Gases, Ecological Footprint and International Cooperation).

The details of various indexes, viz. scaling, normalisation, weighting and aggregation are summarized in Table 3.

6. Conclusion

This paper covers an overview of various sustainability indices which are practically implemented to measure sustainable development. Attempts have been made to compile the information about how the index were formulated using the three central steps, viz.—normalisation, weighting, aggregation. It has been found that normalisation and weighting of indicators – which in general are associated with subjective judgments – reveal a high degree of arbitrariness without mentioning or systematically assessing critical assumptions. As to aggregation, there are scientific rules which guarantee consistency and meaningfulness of composite indices.

Indices and rating systems are subject to subjectivity despite the relative objectivity of the methods employed in assessing the sustainability. The multi-dimensionality of composite indices and rating systems represent one of their main advantages. Indices represent aggregate measures of a combination of complex development phenomena. Composite indices generally combine measures of ends and means. In respect of method and technique, composite indexing is relatively complex.

Although there are various international efforts on measuring sustainability, only few of them have an integral approach taking into account environmental, economic and social aspects. In most cases the focus is on one of the three aspects. Although, it could be argued that they could serve supplementary to each other, sustainability is more than an aggregation of the important issues, it is also about their interlinkages and the dynamics developed in a system. This point will be missing if tried to use them supplementary and it is one of the most difficult parts to capture and reflect in measurements.

Composite indicators may send misleading, non-robust policy messages if they are poorly constructed or misinterpreted. Sensitivity analysis certainly can help in testing the index for robustness. Sometimes, the simple picture depicted

by index may invite spontaneous conclusions on policies. Sub-indicators should be selected meticulously. Choice of model, weighting mechanism and treatment of missing value also play a predominant role while construction of framework. Sometimes index increases the quantity of data needed because data are required for all the sub-indicators and for a statistically significant analysis. There are two critical issues, viz. correlation among indicators and compensability between indicators must be taken into consideration. A composite constructed on the basis of underlying indicators with high internal correlation will give a very robust CI, whose values and ranking are moderately affected by changes in the selection of weights, the normalisation method and other steps involved in the analysis.

Indicators of sustainable development should be selected and negotiated by the appropriate communities of interest. Thus, composite indicator must be constructed within a coherent framework. This would ensure that the specific parameters involved in the evaluation process could change through time according to the interests of the particular stakeholders involved in the construction of the indicator.

REFERENCES

- Adriaanse, A., 1993. Environmental Policy Performance Indicators. A Study on the Development of Indicators for Environmental Policy in the Netherlands. SDV Publishers, The Hague.
- Atkinson, G.D., Dubourg, R., Hamilton, K., Munasighne, M., Pearce, D.W., Young, C., 1997. Measuring Sustainable Development: Macroeconomics and the Environment. Edward Elgar, Cheltenham.
- Azapagic, A., 2004. Developing a framework for sustainable development indicators for the mining and minerals industry. *J. Cleaner Prod.* 12, 639–662.
- Begic, F., Afghan, N.H., 2007. Sustainability Assessment tool for the decision making in the energy system – Bosnian case. *Energy* 32, 1979–1985.
- Bisset, R., 1988. Developments in EIA methods. In: Wathern, P. (Ed.), *Environmental Impact Assessment: Theory and Practice*. Routledge, London.
- Berke, P., Manta, M., 1999. Planning for Sustainable Development: Measuring Progress in Plans; Working Paper; Lincoln Institute of Land Policy. Cambridge, Massachusetts. <http://www.lincolnst.edu/pubs/pub-detail.asp?id=58>
- Bossel, H., 1999. Indicators for Sustainable Development: Theory, Method, Applications. A Report to the Balaton Group, IISD, Canada.
- Brekke, K.A., 1997. Economic Growth and the Environment: On the Measurement of Income and Welfare. Edward Elgar, Cheltenham and Lyme.
- CES, 2000. Index of Sustainable and Economic Welfare.
- Chambers, N., Simmons, C., Wackernagel, M., 2000. Sharing Nature's Interest Ecological Footprints as an indicator of Sustainability (ch. 9, p. 145 assessing impact of org.s and services).
- Chambers, N., Lewis, K., 2001. Ecological Footprint Analysis: Towards a Sustainability Indicator for Business. ACCA Research Paper, vol. 65. Glasgow.
- Cobb, C., Halstead, T., Rowe, J., 1995. The Genuine Progress Indicator: Summary of Data and Methodology. Redefining Progress, CA.
- Commission of the European Communities, 1984. The regions of Europe: Second periodic report on the social and economic situation of the regions of the Community, together with a statement of the regional policy committee, OPOCE, Luxembourg.
- CSD, 2001. Indicators of Sustainable Development: Guidelines and Methodologies. Commission on Sustainable Development, New York, USA. <http://www.un.org/esa/sustdev/natlinfo/indicators/indisd/indisd-mg2001.pdf>.
- Daly, H.E., Cobb, J.B., 1989. For the Common Good: Redirecting the Economy towards the Community. The Environment and a Sustainable Future, Boston.
- DeSimone, L., Popoff, F., 1997. Eco-Efficiency: The Business Link to Sustainable Development. MIT Press, Cambridge.
- Ditz, D., Ranganathan, J., 1997. Measuring Up: Towards a Common Framework for Tracking Corporate Environmental Performance. World Resources Center, Washington, DC.
- Ebert, U., Welsch, H., 2004. Meaningful environmental indices: a social choice approach. *J. Environ. Econ. Manage.* 47, 270–283.
- EEA, 2001. Total Material requirement of European Union, technical report No. 56, Copenhagen.
- Emam, K., Goldenson, D., McCurley, J., Herbsleb, J., 1998. Success or failure? Modeling the likelihood of software process improvement. International software engineering research network. Technical Report ISERN-98-15.
- Environmental Sustainability Index (ESI), 2001. Environmental Sustainability Index. Yale Center for Environmental Law & Policy, New Haven. ESI (Environmental Sustainability Index), 2002. Environmental Sustainability Index. Yale Center for Environmental Law & Policy, New Haven.
- Esty, D.C., Levy, M.A., Srebotnjak, T., de Sherbinin, A., Kim, Ch.H., Anderson, B., 2006. Pilot Environmental Performance Index. Yale Center for Environmental Law & Policy, New Haven.
- EU, 1999. Towards Environmental Pressure Indicators for the EU, Environment and Energy Paper Theme 8, Luxembourg. T
- Estes, R., 1974. A Comprehensive Corporate Social Reporting Model. Federal Accountant, pp. 9–20.
- European Commission, 2000. Business Climate Indicator. DG ECFIN, European Commission, Brussels.
- European Commission, 2001a. Summary Innovation Index. DG Enterprise, European Commission, Brussels.
- European Commission, 2001b. Internal Market Scoreboard. DG MARKT, European Commission, Brussels.
- The Environmental Vulnerability Index (EVI), 2005. SOPAC Technical Report (Suva, Fiji Islands). SRU (Rat von Sachverständigen für Umweltfragen) (1994).
- Fagerberg, J., 2001. In: Lundvall, B., Archibugi, D. (Eds.), *Europe at the Crossroads: The Challenge from Innovation-based Growth in the Globalising Learning Economy*. Oxford Press.
- Fizal, M., 2007. An environmental assessment method for cleaner production technologies. *J. Cleaner Prod.* 15, 914–919.
- Funtowicz, S.O., Ravetz, J.R., 1990. Uncertainty and Quality in Science for Policy. Kluwer Academic Publishers, Dordrecht.
- Fussler, C., James, P., 1996. Driving Eco-Innovation: A Breakthrough Discipline for Innovation and Sustainability. Pitman Publishing, London.
- Gassner, J., Narodslawsky, M., 2004. Sustainable economy and their application to Austria. *Int. J. Environ. Sustainable Dev.* 3 (2), 120–144.
- Godfrey, L., Todd, C., 2001. Defining Thresholds for Freshwater Sustainability Indicators within the Context of South African Water Resource Management. 2nd WARFA/Waternet Symposium: Integrated Water Resource Management: Theory, Practice, Cases. Cape Town, South

- Africa. <http://www.waternetonline.ihe.nl/aboutWN/pdf/godfrey.pdf>.
- Global Reporting Initiative (GRI), 2002a. The Global Reporting Initiative—An Overview. Global Reporting Initiative, Boston, USA. Available at <http://www.globalreporting.org> (2004).
- Global Reporting Initiative (GRI), 2002b. Sustainability reporting Guidelines 2002 on Economic and Social Performance. Global Reporting Initiative, Boston, USA. Available at <http://www.globalreporting.org> (2004).
- Guenno, G., Tizzi, S., 1998. The Index of Sustainable Economic Welfare (ISEW) for Italy. *Nota Di Lavoro*, vol. 5.98.
- Hanley, N., 2000. Macroeconomic measures of 'sustainability'. *Journal of Economic Surveys* 14 (1), 1–30.
- Hermann, B.G., Kroeze, C., Jawjit, W., 2007. Assessing environmental performance by combining life cycle assessment, multi-criteria analysis and environmental performance indicators. *J. Cleaner Prod.* 15, 1787–1796.
- Holmberg, J., Karlsson, S., 1992. On Designing Socio-ecological Indicators. In: Svedin, U., Anianssons, B. (Eds.), *Society and the Environment: A Swedish Research Perspective*, Kluwer Academic Publishers, Dordrecht, Netherlands, pp. 89–106.
- Isla, M., 1997. A review of the urban indicators experience and a proposal to overcome current situation. The application to the municipalities of the Barcelona province.
- IUCN/IDRC (The World Conservation Union/International Development Research Center), 1995. Assessing progress towards sustainability: A new approach. In: Thadeus and Trzuna (Eds.), *A sustainable world: Defining and measuring sustainable development*. Sacramento, pp. 152–172.
- Jung, E.J., Kim, J.S., Rhee, S.K., 2001. The measurement of corporate environmental performance and its application to the analysis of efficiency in oil industry. *J. Cleaner Prod.* 9, 551–563.
- Kates, R.W., Clark, W.C., Corell, R., Hall, M.J., Jaeger, C.C., Lowe, I., McCarthy, J.J., Schellnhuber, H.J., Bolin, B., Dickson, N.M., et al., 2001. Sustainability science. *Science* 292, 641–642.
- Kemmler, A., Spreng, D., 2007. Energy indicators for tracking sustainability in developing countries. *Energy Policy* 35, 2466–2480.
- Khan, F., Sadiq, R., Veitch, B., 2004. Life Cycle iNdeX (LiNX): a new indexing procedure for process and product design and decision-making. *J. Cleaner Prod.* 12, 59–76.
- King's Fund, 2001. The sick list 2000, the NHS from best to worst.
- Krajnc, D., Glavic, P., 2005. A model for integrated assessment of sustainable development. *Resour. Conserv. Recycling* 43, 189–208.
- Lancker, E., Nijkamp, P., 2000. A policy scenario analysis of sustainable agricultural development options: a case study for Nepal. *Impact Assess. Project Appraisal* 18 (2), 111–124.
- Lundin, U., 2003. Indicators for Measuring the Sustainability of Urban Water Systems—a Life Cycle Approach, PhD Thesis, Department of Environmental Systems Analysis, Chalmers University of Technology, Göteborg, Sweden.
- Meadows, D., 1998. Indicators and Information Systems for Sustainable Development—A Report to the Balaton Group. The Sustainability Institute. Hartland, USA. <http://www.sustainabilityinstitute.org/resources.html#Sipapers>.
- Morris, D., 1979. Measuring the Condition of the World's Poor: The Physical Quality of Life Index (Overseas Development Council). Pergamon Press, New York.
- Nardo, M., Saisana, M., Saltelli, A., Tarantola, S., 2005. Tools for Composite Indicators Building. European Commission, Ispra.
- Narodoslawsky, M., Krotscheck, Ch., 2004. What can we learn from ecological valuation of processes with the sustainable process index (SPI)—the case study of energy production systems. *J. Cleaner Prod.* 12, 111–115.
- Ness, B., Urbel, Piirsalu, E., Anderberg, S., Olsson, L., 2007. Categorising tools for sustainability assessment. *Ecol. Econ.* 60, 498–508.
- Nilsson, R., 2000. Calculation of composite leading indicators: A comparison of two different methods. In: Paper presented at the CIRET conference, Paris, October.
- National Institute of Science and Technology Policy, 1995. Science and Technology Indicators, NISTEP Report No. 37, Japan.
- Nordhaus, W.D., Tobin, J., 1973. Is growth obsolete? In: Moss, M. (Ed.), *The Measurement of Economic and Social Performance: Studies in Income and Wealth*, vol. 38.
- OECD, 1998. Towards Sustainable Development: Environmental Indicators, Paris, OECD.
- Organisation for Economic Co-operation and Development (OECD), 2002a. An update of the OECD Composite leading Indicators. Short-term economic Statistics division, Statistics Directorate/OECD. Available at <http://www.oecd.org>.
- OECD, 2002b. OECD Guidelines for Multinational Enterprises. Annual Report 2002.
- Parker, J., 1991. Environmental Reporting and Environmental Indices. PhD, Thesis, Cambridge, United Kingdom.
- Pearce, D.W., Atkinson, G., 1993. Capital theory and the measurement of sustainable development: an indicator of weak sustainability. *Ecol. Econ.* 8, 103–108.
- Pezzey, J., 1992. Sustainable Development Concepts—An Economic Analysis. World Bank, Washington, DC.
- Pohl, E., 2006. Towards Corporate Sustainable development - ITT Flygt Sustainability Index, Licentiate Thesis, Mälardalen University.
- Porter, M., Stern, S., 1999. The New Challenge to America's Prosperity: Findings from the Innovation Index, Council on Competitiveness, Washington, DC.
- Pre Consultants, 2004. The Eco-indicator 99—a damage oriented method for life cycle assessment. Methodology report, Available at: <http://www.pre.nl/>.
- Pré Consultants, 2000. The Eco-indicator 99. A damage oriented method for life cycle impact assessment.
- Prescott-Allen, R., 1995. Barometer of Sustainability: a Method of Assessing Progress towards Sustainable Societies. PADATA, Victoria, Canada.
- Prescott-Allen, R., 2001. The Wellbeing of Nations. Island Press, Washington, DC.
- Puolamaa, M., Kaplas, M., Reinikainen, T., 1996. Index of Environmental Friendliness. A methodological study, Eurostat.
- Ram, R., 1982. Composite Indices of Physical Quality of Life, basic Needs fulfillment, and Income. A 'Principal Component' Representation. *J. Dev. Econ.* 11, 227–247.
- Ramachandran, N., 2000. Monitoring Sustainability: Indices and Techniques of Analysis. Concept Publishing Company, New Delhi.
- Saaty, T.L., 1980. The Analytic Hierarchy Process. McGraw-Hill Book Co., N.Y.
- SAM Indexes (2007). The Dow Jones Sustainability Index. www.sustainability-index.com visited 2007-07-15.
- Schmidt-Bleek, 1994. How to reach a sustainable economy, Wuppertal Papers No. 24, Wuppertal, pp. 10–13.
- Singh, R.K., Murty, H.R., Gupta, S.K., Dikshit, A.K., 2007. Development of Composite Sustainability Performance Index for steel industry. *Ecol. Ind.* 7, 565–588.
- SOPAC (South Pacific Applied Geoscience Commission), 2005. Building resilience in SIDS. The Environmental Vulnerability Index (EVI) 2005. SOPAC Technical Report (Suva, Fiji Islands).
- Spangenberg, J.H., 2005. Economic sustainability of the economy: concepts and indicators. *Int. J. Sustainable Dev.* 8, 47–64 (1/2).

- Smeets, E., Weterings, R., 1999. Environmental Indicators: Typology and Overview. European Environment Agency, Copenhagen, Denmark.
- Storrie, D., Bjurek, H., 1999. Benchmarking the Basic Performance Indicators Using Efficiency Frontier Techniques, Report Presented to the European Commission, Employment and Social Affairs DG.
- UNEP (United Nations Environmental Programme), 2000. Integrated Environmental and Economic Accounting—An Operational Manual, Oxford University Press, Oxford.
- United Nations, 1990. Human Development Report. <http://www.undp.org>.
- UN (United Nations), European Commission, IMF (International Monetary Fund), OECD (Organisation for Economic Cooperation and Development), and World Bank (Editors), 2003. Handbook of National Accounting — Integrated Environmental and Economic Accounting. Studies in Methods, Series F, No.61, Rev.1. UN, New York, 572 pp.
- UNDP, 1996. UNDP's Strategy for Implementing its Gender in Development Policy. UNDP, New York.
- UNDP, 2001. Human Development Report, Oxford University Press, New York.
- Wackernagel, M., Rees, W., 1996. Our Ecological Footprint: Reducing Human Impact on the Earth. BC, New Society Publishers, Gabriola Island.
- Wackernagel, M., Rees, W., 1997. Unser ökologischer Fußabdruck. Birkhäuser Verlag, Basel.
- Warhurst, A., 2002. Sustainability Indicators and Sustainability Performance Management. Report to the Project: Mining, Minerals and Sustainable Development (MMSD). International Institute for Environment and Development (IIED). Warwick, England. http://www.iied.org/mmsd/mmsd_pdfs/sustainability_indicators.pdf.
- World Business Council for Sustainable Development (WBCSD), 1997. Signals of Change: Business Progress Toward sustainable Development. Geneva, Switzerland.
- World Business Council for Sustainable Development (WBCSD). 1999. Eco-efficiency Indicators and Reporting: Report on the Status of the Project's Work in Progress and Guidelines for Pilot Application. Geneva, Switzerland.
- World Commission on Environment and Development (WCED), 1987. Our Common Future. Oxford Univ. Press, Oxford.
- World Economic Forum (WEF), 2002. An initiative of the Global Leaders of Tomorrow Environment Task Force. Annual Meeting 2002. Pilot Environment Performance Index. Available at http://www.ciesin.columbia.edu/indicators/ESI/EPI2002_11FEB02.pdf.
- WHO (2000) Overall Health System attainment. Physica Verlag, Heidelberg, Winnipeg, pp. 7–20.
- Zhang, M., 2002. Measuring urban sustainability in China, Thela Thesis, Amsterdam.
- Zolotas, X., 1981. Economic Growth and Declining Social Welfare. New York University Press.

Update

Ecological Indicators

Volume 15, Issue 1, April 2012, Page 281–299

DOI: <https://doi.org/10.1016/j.ecolind.2011.01.007>

An overview of sustainability assessment methodologies

Rajesh Kumar Singh^a, H.R. Murty^b, S.K. Gupta^c, A.K. Dikshit^c

^a PE Sustainability Solutions, Bhilai, India

^b Bhilai Steel Plant, SAIL, Bhilai, India

^c Centre for Environmental Science and Engineering, Indian Institute of Technology, Mumbai, India

ARTICLE INFO

Article history:

Received 3 January 2010

Received in revised form 12 January 2011

Accepted 16 January 2011

Keywords:

Sustainable development

Sustainability indicators

Index

Composite index

Ratings

ABSTRACT

Sustainability indicators and composite index are gaining lot of importance and increasingly recognized as a powerful tool for policy making and public communication in providing information on countries and corporate performance in fields such as environment, economic, social, or technological improvement. By conceptualizing phenomena and highlighting trends, sustainability indicators simplify, quantify, analyze and communicate the complex and complicated information.

There are number of initiatives exist on indicators and frameworks for sustainable development. This article provides an overview various sustainability indices applied in sustainability domain. The paper also compiles the information related to sustainability indices formulation strategy, scaling, normalization, weighting and aggregation methodology.

© 2011 Elsevier Ltd. All rights reserved.

1. Introduction

The concept of sustainable development (SD) has been an important focal point for the decision makers in the industry. As per the Brundtland report the sustainable development as “development that meets the needs of the present generation without compromising the ability of future generations to meet their own needs” (WCED, 1987). There are number of sustainability assessment methodologies exist in practice for evaluating the performance of companies (Ramachandran, 2000). The World Business Council for Sustainable Development (WBCSD, 1997), the Global Reporting Initiative (GRI, 2002a,b) and development of standards (OECD, 2002) were the key driver for adoption of sustainability management in industries. Azapagic (2004) developed a framework for sustainability indicators for the mining and minerals industry, which is also compatible to GRI. Krajnc and Glavic (2005) collected and developed a standardized set of sustainability indicators for companies covering all main aspects of sustainable development.

According to KEI (2005), “Indicators and composite indicators are increasingly recognized as a useful tool for policy making and public communication in conveying information on countries’ performance in fields such as environment, economy, society, or technological development”.

“Indicators arise from values (we measure what we care about), and they create values (we care about what we measure)”

(Meadows, 1998). The indicators are adopted by countries and corporate because of its ability to summarize, focus and condense the enormous complexity of our dynamic environment to a manageable amount of meaningful information (Godfrey and Tootell, 2001). By conceptualizing phenomena and assessing the trends and identifying the hot-spots, indicators simplify, quantify, analyze and communicate the complex and complicated information (Warhurst, 2002).

As per Bebbington et al. (2007), “There is a widely recognized need for individuals, organizations and societies to find methodologies and tools for articulating the extent to which, and the ways in which, current activities are unsustainable”.

Bebbington et al. (2007) identifies two important questions related to evaluating sustainability:

- “How can today’s operational systems for monitoring and reporting on environmental and social conditions be integrated and extended to provide more useful guidance for efforts to navigate a transition towards sustainability?”
- How can today’s relatively independent activities of research, planning, monitoring, assessment, and decision support be better integrated into systems for adaptive management and social learning?”

According to Ness et al. (2007) “The purpose of sustainability assessment is to provide decision-makers with an evaluation of global to local integrated nature–society systems in short and long term perspectives in order to assist them to determine what actions should or should not be taken in an attempt to make societies sustainable”.

DOI of original article: [10.1016/j.ecolind.2008.05.011](https://doi.org/10.1016/j.ecolind.2008.05.011).

E-mail address: r.singh@pe-international.com (R.K. Singh).

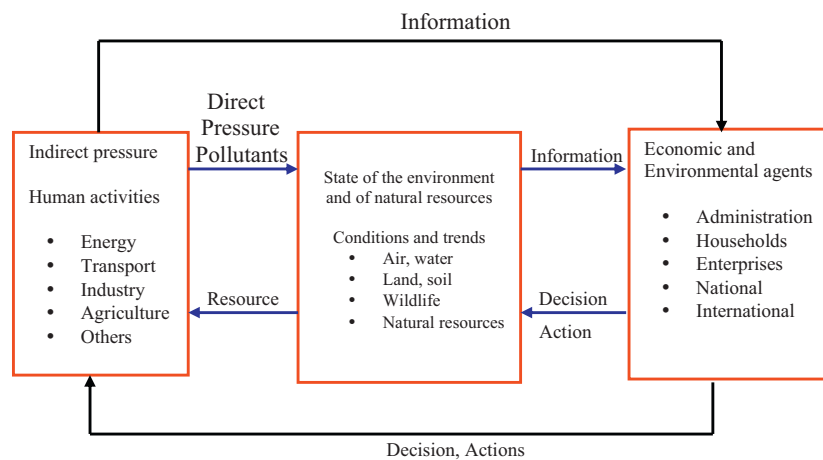


Fig. 1. The pressure-state-response framework.

Source: OECD (1998).

The urgent requirement for a holistic approach to indicators definition and measurement is given more emphasis coupled with development of robust methodologies which enables countries and corporate to measure all important aspects of sustainability (Bossel, 1999). It is worthwhile to define the distinct policy goal for achieving sustainability and then the appropriate indicators are to be identified based on its materiality (Kates et al., 2001). This apparently looks quite easy but leads to complicated situation once the process for selection and development of indicators start. Alignment of goal with the identified indicators for reaching the sustainability is a challenging task and further it becomes more difficult when it is being measured on various dimensions and aggregated into single value (Kuik and Gilbert, 1999).

2. Sustainable development indicators

A two-step approach for measuring the sustainability was suggested by Warhurst (2002) viz. improvement in various areas measured through SDIs individually and assessing the overall improvement achieved towards sustainable development by a aggregating these individual areas with respect to their respective dimensions. Lancker and Nijkamp (2000) emphasize upon target values of indicators and states that, “a given indicator doesn’t say anything about sustainability, unless a reference value such as thresholds is given to it”.

Some of the highlights from Lundin (2003), Berke and Manta (1999) and Spohn (2004), SDIs can be used to:

- Assess and evaluate the performance.
- Provide trends on improvement as well as warning information on declining trend for the various dimensions of sustainability i.e. economic, environment and social aspects.
- Provide information to decision makers to formulate strategies and communicate the achievements to the stakeholders.

While developing a framework and selecting SDIs, Spohn (2004) identifies two distinctive main approaches:

- The ‘top-down’ approach, which enables experts and researchers to define the overall structure for achieving the sustainability and subsequently it is broken down into set of indicators.
- On the contrary, the ‘bottom-up’ approach requires systematic participation of various stakeholders to understand the framework as well as the key sustainable development indicators.

Holmberg and Karlsson (1992) developed the concept of socio-ecological indicators (SEIs) in order to establish the linkage between

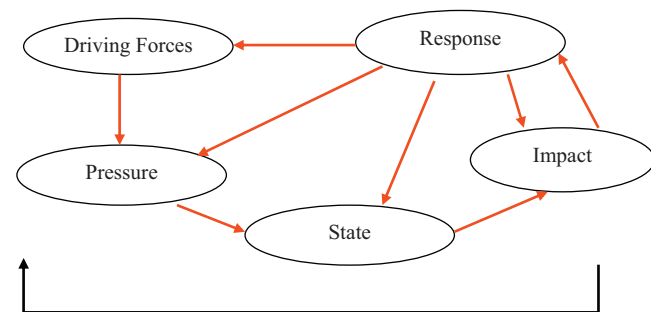


Fig. 2. The DPSIR framework for reporting on environmental issues.
Source: Smeets and Weterings (1999).

society and environment. Another important development in this area is the Pressure State Response (PSR) which is primarily based on the concept of cause and effect phenomena. This framework defines the impact of human activities which exert ‘pressures’ on the environment and results in change in the quality and the quantity of environment conditions (the ‘state’). Accordingly, society responds to these changes through environmental, economic and sectoral policies (the ‘societal response’) for its adaptation (OECD, 1993). Response of society acts as a feedback to “pressure” segment through human activities (OECD, 1998). Fig. 1 illustrates this PSR-framework of OECD.

According to Spohn (2004), “The Driving Force Pressure State Impact Response (DPSIR) model is an extension of the PSR framework and has been adopted by the European Environmental Agency (EEA) and the European Statistical Office in 1997”. Fig. 2 shows those five aspects and their connections.

Consequent to the outcome emerged in Agenda 21 on sustainable development indicators, the UN Commission on Sustainable Development (CSD) came out with a list of about 140 indicators, which cover various dimensions of sustainability (CSD, 2001).

For measuring sustainability with a focus on integration of environmental and social aspects, a barometer of sustainability has been developed (Prescott-Allen, 1995). It comprises of two parts, namely ecosystem well-being for environmental aspects and human well-being for social aspects, which clearly shows that improvement in both dimensions, is equally needed for achieving sustainable development. Another landmark achievement in sustainability assessment demonstrated through development of the ecological footprint (Wackernagel and Rees, 1996) which measures the total land area which is needed to maintain the food, water, energy and waste-disposal demands per person, per product or per

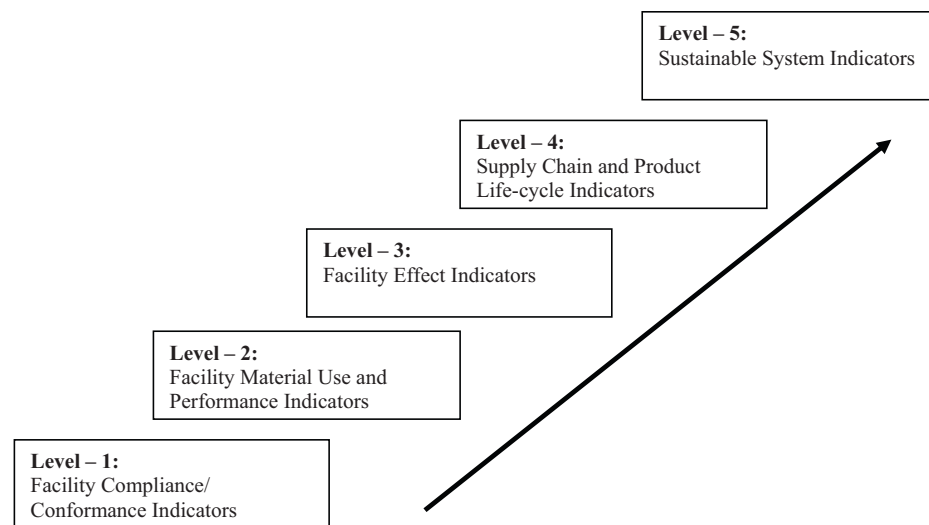


Fig. 3. Lowell Center for sustainable production indicator framework.

Source: Spohn (2004).

city. The eco-efficiency framework of the WBCSD allows assessing the performance related to economic and environmentally sustainability using set of appropriate indicators which are important for organization (WBCSD, 1999).

Spohn (2004) explained the LCSP framework which primarily focuses on the environmental, health and safety aspects of sustainable production. The framework has five step approaches for arriving towards sustainable system indicators as depicted in Fig. 3.

In order to achieve progress in sustainability, the trend of SDIs needs to be systematically monitored, measured, quantified and interpreted (Zdan, 2010). Though lot of research work has been carried out in the area of sustainability metrics. There is still lot of scope exists in this domain as sustainability context for countries or for any organization is diverse and complex in nature (Welsch, 2005).

The United Nations Environment Programme (UNEP) in association with the United States nongovernmental organization, Coalition for Environmentally Responsible Economics (CERES) launched the Global Reporting Initiative (GRI) in 1997 for improving the quality, structure and coverage of sustainability reporting (Labuschagne et al., 2005).

Sustainability Reporting is the focal point of the guidelines. The GRI uses sustainability reporting on three dimensions viz. social, economic, and environmental (Fig. 4).

The United Nations Commission on Sustainable Development (CSD) devised a framework of monitoring the various sustainability indicators for assessing the performance of government towards sustainable development goals (Labuschagne et al., 2005). The structure of framework comprises four dimensions viz. social, environment, economic and institutional and it is broken down into 38 sub-indicators and 15 main indicators (Fig. 5) another set of indicators formulated by The Institution of Chemical Engineers (IChemE) has also formulated sustainability metrics covering three dimensions environment, economic and social which are further sub-divided into set of indicators (Labuschagne et al., 2005). This metrics was initiated to assess the sustainability performance of process industry (Fig. 6).

The Wuppertal Institute also developed framework of sustainability by addressing the four dimensions of sustainable development, as defined by the United Nations CSD. These four aspects are linked through set of various indicators (Labuschagne et al., 2005) (Fig. 7).

Over the years, there have been consistent efforts at local, regional, national and international level to identify appropriate

sustainability indicators as per the sustainability context and coverage. The UN Commission on Sustainable Development (UNCSD) has derived a list of 58 indicators from the overall list of 134 indicators for all countries to use.

3. Classification and evaluation of Sustainability Assessment methodologies

Dewan (2006) elaborated two key methodologies for Sustainability Assessment viz. monetary aggregation method and physical indicators and further explained that Monetary aggregation method is primarily used by economist, whereas physical indicators are used by scientists and researchers. The examples of economic approaches include natural resource accounting and modeling, sustainable growth modeling, and defining weak and strong sustainability conditions. Dewan (2006) also classified and discussed economic frameworks such as Lindahl and Solow-Hartwick framework in detail.

According to Dewan (2006) "The Hicks/Lindahl requirement for sustainable income is non-declining value of the aggregated capital stock (per capita produced capital and per capita natural capital) over time. *Weak sustainability condition* assumes perfect substitutability between produced and natural capital and *strong sustainability condition* assumes no substitutability".

According to Dewan (2006) "In the Solow-Hartwick framework sustainable growth path is different from the optimal growth path which means that sustainability can be achieved at the cost of efficiency".

Ness et al. (2007) developed a holistic framework for sustainability assessment tool which is shown in Fig. 8. Bebbington et al. (2007) categorized these in three areas viz. (1) indicators and indices, which are further classified into non-integrated and integrated, (2) product-related assessment tools with the major focus on the material and/or energy flows of a product or service from life cycle perspective, and (3) integrated assessment.

Bohringer and Jochem (2007) discussed about three key inadequacies about SD indices which are to be systematically addressed. First issue is the selection of appropriate indicators where in one should have focus that themes determine the thematic aggregation method and units determine the technical aggregation method. Further, weighting and normalization should be done in transparent manner with proper sensitive analysis. For achieving commensurability of input variables is the third important concept.

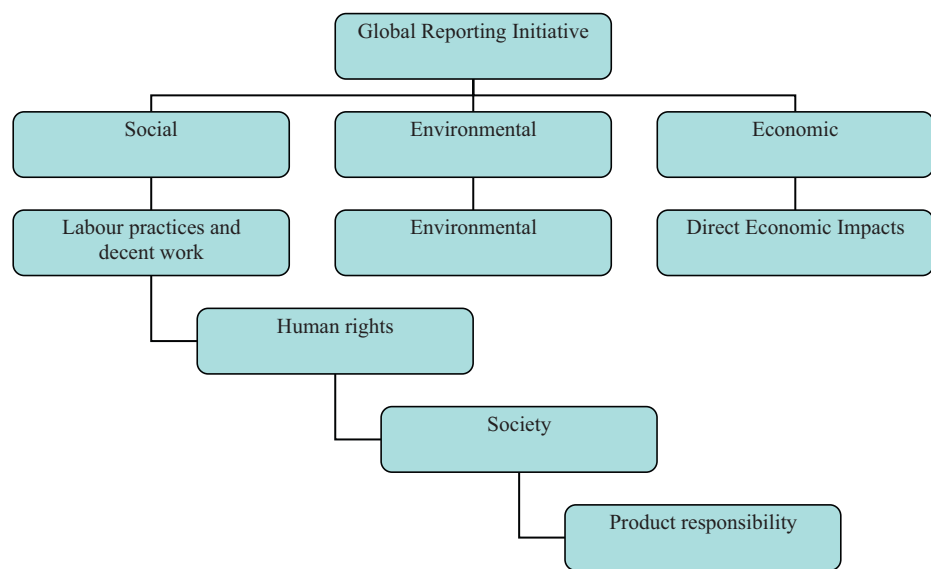


Fig. 4. The hierarchical structure of the global reporting initiative (GRI) framework.

Source: GRI (2002a).

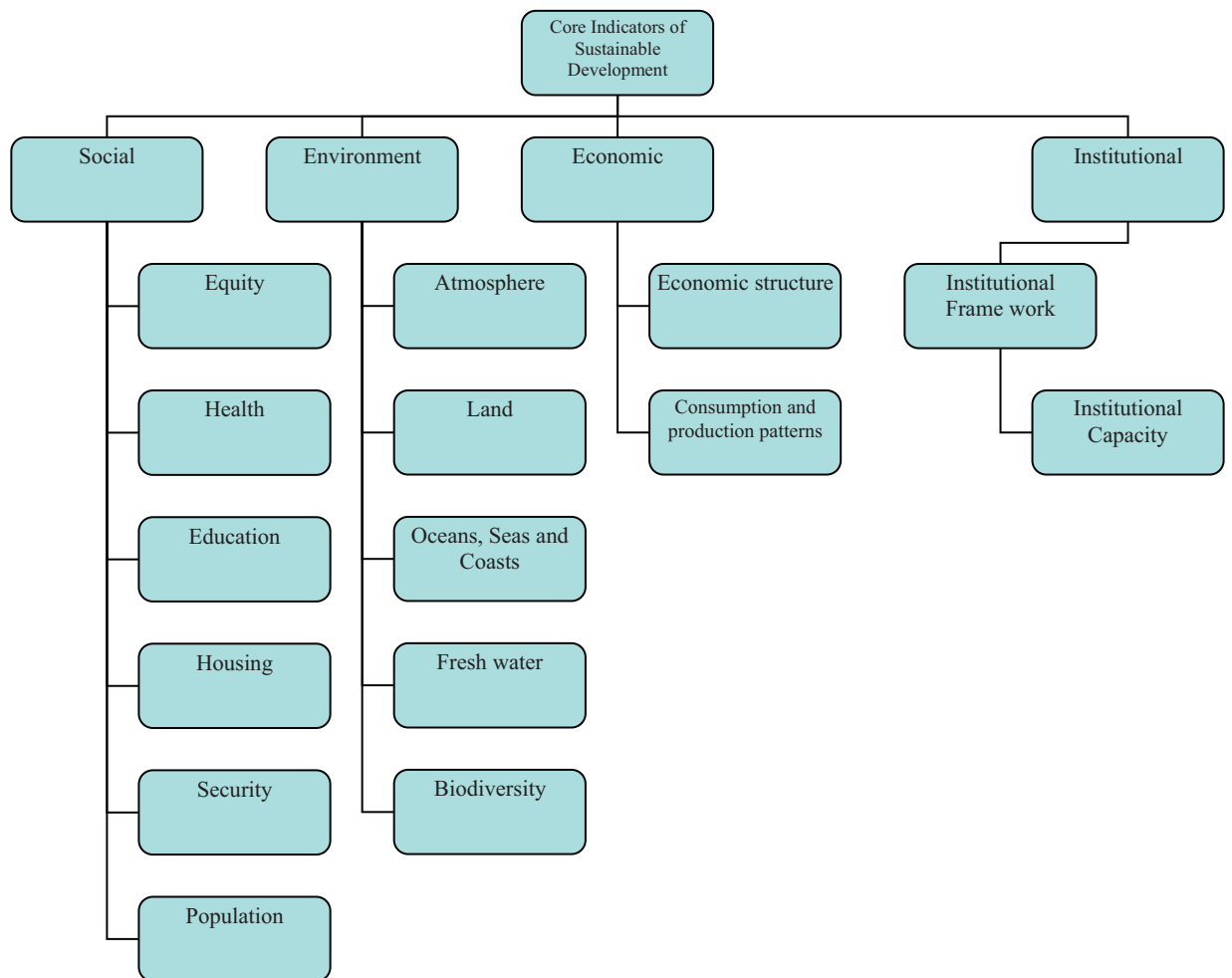


Fig. 5. The United Nations Commission for Sustainable Development (UNCSD) theme indicator framework.

Source: Labuschagne et al. (2005).

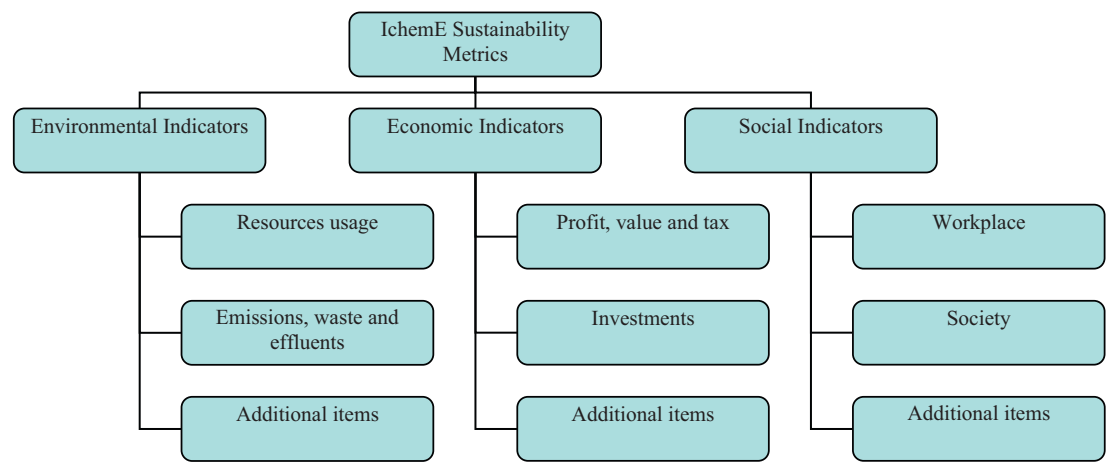


Fig. 6. The Institute of Chemical Engineers (IChemE) sustainability metrics.

Source: Labuschagne et al. (2005).

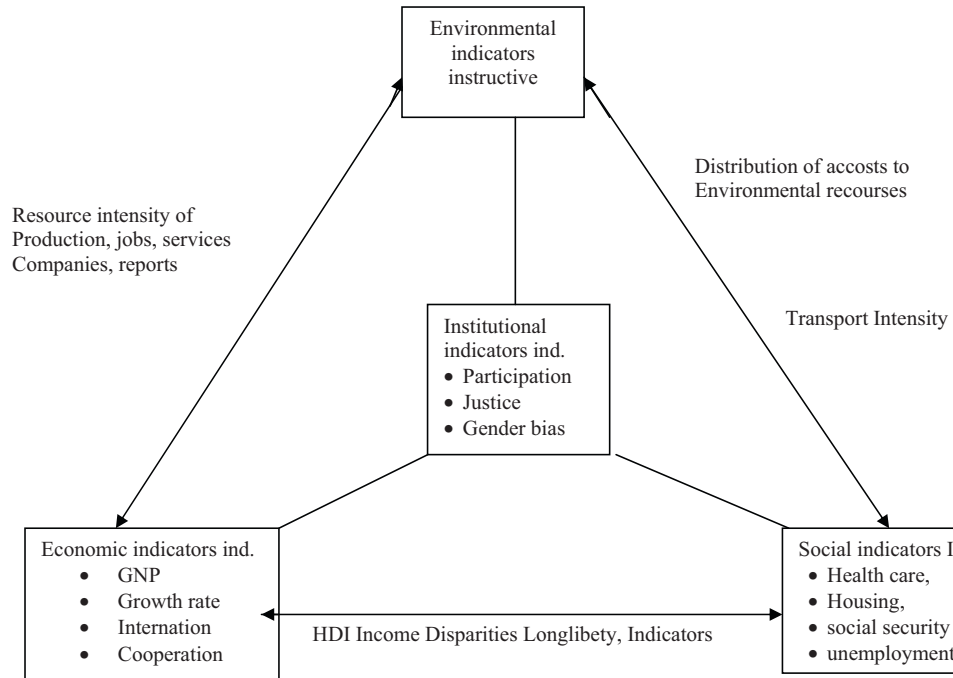


Fig. 7. The Wuppertal sustainable development indicator framework.

Source: Labuschagne et al. (2005).

The classification and evaluation of indicators can be done based on the following general dimensions of measurement which is well defined by Booysen (2002).

- Aspects of the sustainability to be measured by indicators.
- Techniques/methods/tools used for development of index like quantitative/qualitative, subjective/objective, cardinal/ordinal, unidimensional/multidimensional.
- Whether the indicator compare the sustainability measure across 'cross-section' or 'time-series', absolute or relative manner?
- Does the indicator measure sustainability in terms of input ('means') or output ('ends')?
- Clarity and simplicity in its content, purpose, method, comparative application and focus.
- Availability of data for the various indicators.
- Flexibility in the indicator for allowing change, purpose, method and comparative application.

3.1. Guidelines for construction of indices

For constructing a composite index, policy goal has to be clearly defined. The components and sub-components then need to be determined based on theory, empirical analysis, pragmatism, intuitive appeal, or some combination of these methods (Booyse, 2002). When empirical analysis is used for selection then both bivariate and multivariate statistical techniques can be employed. Bivariate analysis measures the correlation of the association between all pairs of variables; multi-variate analysis assesses the overall strength of any set of variables to measure any other variable. Bivariate analyses normally uses correlation matrices while some of the multivariate techniques are discriminant, principal component and factor analyses. The objective of these techniques is to determine the number of key variables which really influence the composite index.

Booyse (2002) defined four ways for performing the scaling of composite indexing purposes. Firstly, if the variables are already

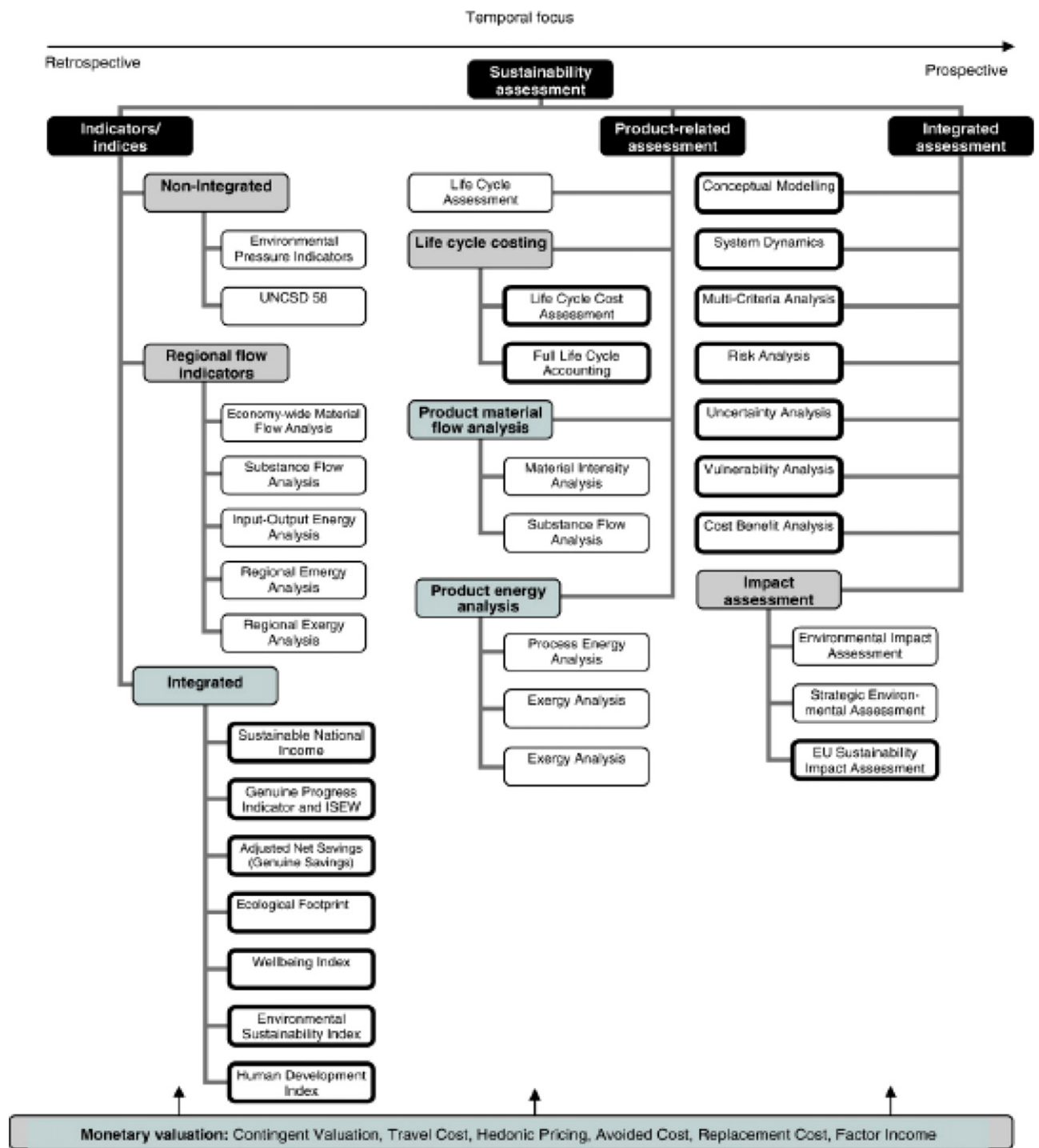


Fig. 8. Framework of sustainability assessment tools.

Source: Ness et al. (2007).

scaled than there is no need of scaling variables. Secondly, the use of standard scores (z and t values) can be employed for composite indexing. *Thirdly*, by conducting survey results, variables can be transformed and represented in the form of ordinal response scales. Finally, variables can be scaled on conventional linear scaling transformation (LST) method. For e.g. variables are scaled from 0 to 10 or 0 to 100 with the aid of this technique. However, this requires target value or points of reference relative to which indicators can be scaled. A minimum and a maximum value are required to be identified for each of the variables.

Ebert and Welsch (2004) identified four generic classes of scales that can be applied to variables viz. interval-scale non-comparability (INC), interval-scale full comparability (IFC), ratio-scale non comparability (RNC), and ratio-scale full comparability (RFC). Table 1 provides an overview of aggregation rules for variables with respect to scale and comparability.

Table 1 provides the minimal methodological requirements to be satisfied for development of any SD index. However, in many cases, indices applied in practice typically violate these qualifying conditions: whereas the aggregation of variables measured in

Table 1
Aggregation rules for variables by Ebert and Welsch.

	Non-comparability	Full comparability
Interval scale	Dictatorial ordering	Arithmetic mean
Ratio scale	Geometric mean	Any homothetic function

ratio-scale without being comparable would call for a geometric mean, indices are often based on a (misleading) arithmetic mean (Bohringer and Jochem, 2007).

Weighting system and method employed in aggregating component scores plays a predominant role for development of composite index. Normally implicit weights are introduced during scaling and explicit weights can be introduced during aggregation (Booyesen, 2002). In case of explicit weights being not employed, the component and index scores are simply averages of the corresponding variable and component scores. Multivariate techniques provide relatively better option for weight selection. Principal component analysis is one of the widely used multivariate analysis tool for weighting of components based on the proportion of variance in the original set of variables explained by the first principal component of that particular component. Once the weights have been assigned to each indicator and the each indicator transformed into component score, these scores are aggregated into a composite score. The various choices of method employed in weighting and aggregation is finally dependent on the goal, nature, scope, type of indicators etc. (Booyesen, 2002).

Sensitivity analysis along with proper validation should be done on composite indices (Nardo et al., 2005). Based on the validation results, indices need to be improved and adjusted. The validation adjustments are normally carried out at different stages viz. selection, scaling, weighting and aggregation in order to improve the quality of the final results. Validation is normally performed by using either item analysis or external validation (Booyesen, 2002).

There is always a requirement of demonstrating proper evidence through the reliable results while using composite index. If the user simply does not know, or is not sure about the testing and certification of the composite, then composite's quality is low (Moldan et al., 2004). A notational system called NUSAP (an acronym for five categories: Numeral, Unit, Spread, Assessment, Pedigree) can be used to characterize the quality of quantitative information based in large part on the experience of research work in the matured natural sciences (Funtowicz and Ravetz, 1990). One category of NUSAP, the pedigree, is an evaluative description of the procedure used to build the composite indicator.

4. Composite indicators for sustainability

The construction of composite indicators involves selection of various methods/tools/techniques at different stages of development process. However, this may result in various issues of uncertainty due the selection of data, erroneous data, data imputation methods, data normalization, standardization, weighting methods, weights' values and aggregation methods.

Development of composite indicators is considered to be a unique approach for evaluating sustainable development. Computing aggregate values is one of the common methods for constructing indices. Composites indices can be constructed with or without weights depending on its application. Indices are very useful in focusing attention and, often simplify the problem (Atkinson et al., 1997).

Use of uncertainty and sensitivity analysis can assist in identifying the gaps and check the robustness of the composite indicator, which further enhances the transparency and credibility of the indices. Tools for sensitivity analysis should evaluate the output variation in models and also be able to apportion composite

Table 2
Methods for calculating composite indicators (CIs). Source: OECD (2002).

Method	Equation
1. Sum of country rankings	$CI_c^t = \sum_{i=1}^N Rank_k^t$
2. Number of indicators above the mean minus the number below the mean	$CI_c^t = \sum_{i=1}^N \cdot \text{sgn} \left[\frac{x_k^t}{x_{EU_i}^t} - (1 + p) \right]$
3. Ratio or percentage differences from the mean	$CI_c^t = \frac{\sum_{i=1}^N w_i y_k^t}{\sum_{i=1}^N w_i}$, where $y_k^t = \frac{x_k^t}{x_{EU_i}^t}$
4. Percentage of annual differences over consecutive years	$CI_c^t = \frac{\sum_{i=1}^N w_i y_k^t}{\sum_{i=1}^N w_i}$, where $y_k^t = \frac{x_k^t - x_k^{t-1}}{x_k^t}$
5. Standardized values	$CI_c^t = \frac{\sum_{i=1}^N w_i y_k^t}{\sum_{i=1}^N w_i}$, where $y_k^t = \frac{x_k^t - x_k^{t-1}}{\sigma_{EU_i}^t}$
6. Re-scaled values	$CI_c^t = \frac{\sum_{i=1}^N w_i y_k^t}{\sum_{i=1}^N w_i}$, where $y_k^t = \frac{x_k^t - \min(x_k^t)}{\text{range}(x_k^t)}$

Notes: x_k^t is the value of indicator i for country c at time t . w_i is the weight given indicator i in the composite index. In Method 2, p = an arbitrarily chosen threshold above and below the mean.

indicator quantitatively or qualitatively, to different types of variation in the study.

The steps suggested by Saisana and Tarantola (2002) for establishing the framework of Composite indicators are described below.

Once the policy goal has been defined, it is very important to decide whether the phenomenon to be measured would fetch in benefit from the use of composite indicators. Secondly, there should be better understanding of influencing parameters and themes. A clear cut approach is needed for selecting the individual sub-indicators. The data related to sub-indicators should be of high quality. Proper imputation techniques should be employed for achieving better data quality. In case of data gaps, methods like mean substitution, correlation results, time series, etc. can be applied. However, it is necessary to assess the suitability of methods which can have reliable result. Thirdly, suitable normalizing and weighting techniques are to be used for the sub-indicators. The selection of the appropriate methods depends on the data and the scope of the study. Finally, after aggregation of sub-indicators, it is required to be checked for robustness and sensitivity.

Some of the key methods of aggregation employed are principal components analysis, factor analysis, distance to targets, expert opinion (budget allocation) and analytic hierarchy process.

The various methods for calculating the composite indicators are shown in Table 2.

Dewan (2006) presents the milestones in the development of various indices in the field of economic, environmental and social aspects, which are enumerated below:

Measure of Economic Welfare (MEW)	Nordhaus and Tobin (1973), IMSA (1995), Jackson and Marks (1994)
Index of Social Progress (ISP)	Estes (1974)
Physical Quality of Life Index (PQLI)	Morris (1979)
Economic Aspects of Welfare (EAW)	Zolotas (1981)
Sustainability Performance Index (SPI)	Krotscheck and Narodoslawski (1994)
Ecological Footprint	Wackernagel and Rees (1996)
Material Input Per Service Unit (MIPS)	Schmidt-Bleek (1994)
Barometer of Sustainability	IUCN/IDRC (1995)
Environmental Pressure Indicators (EPI)	EU (1999)
Human Development Index (HDI)	United Nations (1990)
Index for Sustainable Economic Welfare (ISEW)	Daly and Cobb (1989), Guennoun and Tizzi (1998)
Genuine Progress Indicator (GPI)	Cobb et al. (1995)

Genuine Savings Indicator (GSI)	Hamilton (1999)
Total Material Requirement	EEA (2001)
Eco-efficiency Indices	WBCSD (1999)
Compass of Sustainability	Atkinson et al. (1997)
Environmental Sustainability Index (ESI)	WEF (2002a,b)

5. Overview of sustainability indices

The brief description of various indices and ratings are described below.

5.1. Innovation, knowledge and technology indices

5.1.1. Summary Innovation Index

The Summary Innovation Index (SII) is an innovation scoreboard developed for European member states, which shows achievements and trends, highlights strengths and weaknesses of Member States' performances, and examines the European convergence in innovation (DG Enterprise, 2001). The innovation scoreboard comprises of 17 indicators broken down in four segments human resources, knowledge creation, transmission and application of new knowledge and innovation finance, output and markets. The study was carried out between 1995/1997 and 1999/2000. The SII is evaluated for a given country based on value equal to the number of indicators that are more than 20% above the EU overall mean, minus the number of indicators that are more than 20% below. Adjustment has also been done in SII for differences in the number of available indicators for each country. The index can vary between +10 (all indicators are above average) to -10 (all indicators are below average).

5.1.2. Investment in the knowledge based economy

Investment in the knowledge based economy is built by DG RTD, which aims to summarize various indicators of national investment in highly qualified human resources in science, technology, research and education, so as to measure a country's capacity to create knowledge (Muldur, 2001). The composite indicator aggregates seven indicators with respect to the number of researchers, the number of new doctors in science and technology (annual influx), domestic expenditure on R&D, expenditure on information technologies and imports of high-tech products. For normalization purpose and also to neutralize the effect of the size of the countries, all sub-indicators are measured on per capita basis.

5.1.3. Performance in the knowledge based economy

The second index related to the knowledge-based economy aims to measure a country's performance in converting the new knowledge into economic and technological progress to increase both a country's competitiveness and the well being of its citizens. The index combines six indicators: the number of EPO and USPTO patents, the number of publications, production of high-tech exports, the employment in the high-tech production and GDP per capita.

5.1.4. Innovation Index

The *Innovation Index* comprises of three key areas that combine between 3 and 5 variables, which are mostly collected from OECD databases. The first key area i.e. *generation of new knowledge* combines variables such as basic research as a percentage of GDP and non-business researchers as a share of the labour force. The second key area is *industry/science linkages* demonstrated by public/private links through data relating to R&D, the scientific evidence of patents, and publications. In the third key area *industrial innovation* is represented by data on business research,

patents and the introduction of new products and processes which are also used to measure the progress in innovation in private sector.

5.1.5. National innovation capacity

National innovation capacity index has been developed to define the quantitative benchmark of national innovative capacity. There are eight sub-indicators identified viz. expenditures on R&D, personnel employed in R&D, openness to International Trade & Investment, strength of protection for intellectual property, share of GDP spent on secondary and tertiary education, GDP Per Capita, percentage of R&D Funded by private Industry and percentage of R&D performed by Universities. This index depicts the national highlights in terms of resource commitments and policy options which has got significant impact on innovative output in the long run (Porter and Stern, 1999).

5.1.6. Information and communication technologies

The index aims at providing an overall state of a country's situation regarding development and application of information and communication technologies (Fagerberg, 2001). Five indicators like number of mobile telephones, number of Internet users, etc. are used for the aggregation of the composite indicator.

5.1.7. Technology Achievement Index

The Technology Achievement Index (TAI) is formulated to assess the performance of countries in promoting and diffusing technology and in capacity building with a focus on developing a human skills base (United Nations, 2001). The index comprises of four dimensions which uses data from 8 indicators. The four dimensions are technology creation in terms of number of patents granted to residents per capita and by receipts of royalties and license fees from abroad per capita, diffusion of recent innovations in terms of the number of Internet hosts per capita and the share of high- and medium-technology exports in total goods exports, diffusion of old innovations, as measured by telephones (mainline and cellular) per capita and electricity consumption per capita and Human skills, in terms of mean years of schooling in the population aged 15 and above and the gross tertiary science enrolment ratio.

5.1.8. General Indicator of Science and Technology

General Indicator of Science and Technology (GIST) developed by the National Institute of Science and Technology Policy of Japan (NISTEP) to highlight the trends in Japan's Science and Technology activities and conduct international benchmarking and time-series analysis (NISTEP, 1995). GIST comprises of 13 indicators classified in two categories. Five indicators grouped as "input" and eight as "output". The inputs indicators include: "R&D expenditure", "R&D scientists/engineers", "Bachelor's of Science degrees conferred", "Bachelor's of Engineering degrees conferred", and "technology imports". The output indicators identified as: "scientific papers", "scientific paper citations", "domestic patents", "external patents", "patent citations", "product output", "high tech product output" and "technology exports".

5.1.9. Success of software process improvement

The Index comprises of 14 variables which have significant impact on the software process improvement. The prime objective of development of this index is to understand the software process improvement mechanism and also identify reasons that can explain the successes and failures of software process improvement efforts (Emam et al., 1998).

5.2. Development indices

5.2.1. Human Development Index

The Human Development Index (HDI) developed by United Nations comprises of three basic components viz. a long and healthy life, knowledge and GDP per capita (United Nations, 2001). Long and healthy life is measured based on life expectancy at birth, knowledge is evaluated on adult literacy rate (with two-thirds weight) and the combined primary, secondary and tertiary gross enrolment ratio (with one-third weight) and GDP per capita in terms of PPP US\$. All the indices are evaluated based on minimum and maximum values for each indicator and performance in each component is expressed as a value between 0 and 1.

5.2.2. Index of sustainable and economic welfare

Centre for Environmental Strategy (CES) and the New Economics Foundation (NEF) developed the Index of sustainable and economic welfare (ISEW). The major goal of this index is to measure the component of economic activity that leads to welfare to the society. It further aims to replace GDP as an indicator of progress, because of its ability to demonstrate the relationship between economic activities and their direct impacts on the quality of life (CES, 2000). The index comprises of seven economic activities divided into set of twenty sub-indicators. The main seven components related to economic activities include: adjusted consumer expenditure, services from domestic labour, from consumer durables, from streets and highways, public expenditure on health and education, net capital growth and net change in international position. The thirteen indicators that related to the reduction in welfare are: consumer durables (difference between expenditure and value of services), private expenditures on health and education, commuting costs, personal pollution control, automobile accidents, water pollution, air pollution, noise pollution, loss of natural habitats, loss of farmlands, depletion of non-renewable resources, costs of climate change and costs of ozone depletion.

5.2.3. Relative intensity of regional problems in the Community (by the EC)

The European Commission (EC) developed an index for measuring the regional problems in the community which is known as "relative intensity of regional problems in the Community" (Commission of the European Communities, 1984). The prime objective of the Index is to help assist communities to formulate concrete regional policy for strengthening the economic performance of regions having slower pace of development. The European Commission constructed this uniform and global methodology to synthesize three sub-indicators: GDP per employed in ECU, GDP per head in PPS, and unemployment rate.

5.3. Market and economy based indices

5.3.1. Internal Market Index

The Internal Market Index aims to measure whether the benefits which are likely to be derived from the Internal Market Strategy for the betterment of the citizens and companies, are effectively delivered (DG MARKT, 2001). There are 19 set of variables aggregated in the Index. Some of the key indicators are growth in per-capita income, long-term unemployment, price dispersion, growth in intra-EU trade, prices of utilities services, and availability of venture capital, energy intensity and greenhouse gas emissions.

5.3.2. Business climate indicator

DG ECFIN has constructed a composite indicator based on results of business surveys. This is designed to deliver an indication and early warning of the cyclical situation of the business within the area and to improve the understanding of the business cycle in the

European area as a whole (DG ECFIN, 2000). The five sub-indicators are selected based on the responses of national business surveys, production trends in recent past, order books, export order books, stocks and production expectations. Each series of information is transformed between -100 (indicating that all firms have reported a deterioration) and +100 (all firms have noted an improvement).

5.3.3. European Labour Market Performance

The European Labour Market Performance Index aims to measure the labour market performance using Basic Performance Indicators that are used in the benchmarking process of the Amsterdam Treaty (Storrie and Bjurek, 1999). For demonstration purposes, three indicators of unemployment from the Basic Performance Indicators are benchmarked. These three indicators are: the unemployment rate, the long-term unemployment rate and the youth unemployment ratio.

5.3.4. Composite Leading Indicators

The OECD Composite Leading Indicators (CLI) comprises of individually elected leading indicators developed for 22 member states (Nilsson, 2000). Composite Leading Indicators aims to provide better forecasting and tracking of business cycle. The OECD CLI's are based on individually selected leading indicators for each country (OECD, 2002).

5.3.5. Genuine savings (GS)

Pearce and Atkinson (1993) developed this index. This index is based on Hicksian income concept (Bohringer and Jochem, 2000). This indicator assesses the economy's sustainability and redefines the wealth in broader perspective and calculates the net change in the whole range of assets that are important for development: produced assets, natural resources, environment quality, human resources and foreign assets.

5.3.6. Economic Sentiment Indicator

The Economic Sentiment Indicator of the European Commission (EC ESI) aggregates business surveys into a single cyclical indicator. This indicator also reduces the risk of false signals and provides a better forecasting and tracking tool to assess individual components (Nilsson, 2000). The Economic Sentiment Indicator comprises of four components viz. industrial confidence indicator, construction confidence indicator, consumer confidence indicator and share price index.

5.3.7. Green Net National Product (GNNP) or (EDP) and SEEA

Green Net National Product (GNNP) takes care of both aspects of environmental degradation as well as flow of earnings and makes adjustments. This eliminates the flaws in GDP. The Environmentally Adjusted Net Domestic Product (EDP) has been developed with the purview of SEEA (System of Integrated Environmental and Economic Accounting - UNEP, 2000). Bohringer and Jochem (2000) explains three different versions of the EDP: "(i) the EDP-I is evaluated by subtracting the depreciations of natural resources from the Net National Income (NNI), (ii) the EDP-II is ascertained by subtracting from the NNI the costs necessary to reach the same state of the environment at the end of the period as existed at the beginning of the period, and (iii) the EDP-III is calculated by subtracting the costs of environmental pressure and destruction using willingness-to-pay methods."

5.4. Eco-system based Indices

5.4.1. Sustainability Performance Index (SPI)

The SPI is developed by Narodslawsky and Krottscheck in 1994 for process industry to measure the sustainability. It uses on

process data during the early stage of planning and data of natural concentrations of substances (not on their presumable impact which is usually not known). The SPI evaluation comprises of calculation of the area needed to embed a process completely into the biosphere. The SPI for the unit process is equivalent to the total area required for production of raw material, process energy and provision of installations for process as well as the area required for the staff and for the accommodation of products and by-products (Lundin, 2003).

5.4.2. Eco-Index Methodology

For performing the Ecological Footprint (EF) analysis, the Eco-Index Methodology was developed by Best Foot Forward (Chambers et al., 2000) which primarily utilizes 'component' or 'bottom-up approach' methodology. This is also compatible with the 'compound' top-down approach which collects information from international trade statistics. Eco-Index Methodology takes care of entire life cycle data for assessing the EF conversion factors for most of the key component. The ecological footprint (as measured using global average yields) is normalized by the application of equivalence factors.

5.4.3. Living Planet Index (LPI)

Living Planet Index was developed by WWF (1998) which is used as the global biodiversity indicator. LPI measures trends in over 2000 populations of more than 1100 species of vertebrates in terrestrial, freshwater, and seawater ecosystems. The LPI calculates the sub-index for the three spheres. According to Bohringer and Jochem (2007), LPI is the ratio between its populations for each sphere for each consecutive year. The geometric mean of all ratios of different species multiplied with the index value of the former year provides the biodiversity index for the respective sphere. The base year is considered as 1970 and index value is scale for 1970 is unity.

5.4.4. Ecological Footprint (EF)

The Ecological Footprint (EF) (Wackernagel and Rees, 1997) "quantifies for any given population the mutually exclusive, biotically productive area that must be continuous use to provide its resource supplies and to assimilate its wastes". EF uses bio-productive area as unit of measurement. The footprint accounts the resource supply chains and disposal management options. This analysis calculates whether the land and sea area required per year to sustain the current consumption by the help prevailing technology are within the available resources. Land and sea are divided into five components viz. bio-productive land, bio-productive sea, energy land, built land and biodiversity land for non-human species. Footprints are calculated based on either compound or component or combination of these methods. EF is used to estimate environmental sustainability at national and global level. The Ecoindex™ (Chambers and Lewis, 2001) gained lot of popularity which measures the impact of different products, services, lifestyles.

5.4.5. Fossil Fuel Sustainability Index (FFSI)

Fossil Fuel sustainability index has been developed for fossil fuels which aims to determine the most efficient management of fossil fuel resources for the energy system (Ediger et al., 2007). This study is conducted for 62 countries considering the independence, lifetime and environmental constraints. The effect of these indicators are then integrated into a single index for oil, natural gas, and coal. Two approaches viz. equal weights and principal component analysis have been taken for development of index.

5.5. Composite sustainability performance indices for industries

5.5.1. Composite sustainable development index

Krajnc and Glavic (2005) identified key indicators for three dimensions of sustainability. A composite sustainable development index (I_{CSD}) has been developed in order to track integrated information on economic, environmental, and social performance of the company with real-time information. All the indicators are normalized based on minimum and maximum value and aggregated to three sustainability sub-indices and finally these are composed into an overall indicator of a company performance. Weights of the indicators have been evaluated using the concept of analytic hierarchy process.

5.5.2. Compass Index of Sustainability (CIS)

The Compass Index of Sustainability developed by AtKisson Inc. for Orlando, Florida. CIS comprises of four dimensions of sustainability viz. Nature (N), Economy (E), Society (S) and Well Being (W) corresponding to the four points on a compass. Indicators were scaled on a 0–100 performance scale. Scales were set by normative judgments. Each indicator has equal weight. Simple averaging technique was employed for aggregation (Atkinson et al., 1997).

5.5.3. Composite Sustainability Performance Index

The Composite Sustainability Performance Index (CSPI) is an attempt to develop a measure of sustainability and to evaluate how well a company demonstrates its policies and commitments regarding sustainable development. This model enables industry to identify the key sustainability performance indicators and provides framework for aggregating the various indicators into the Composite Sustainability Performance Index (Singh et al., 2007). The calculation of CSPI is a step-by-step procedure of grouping various basic indicators into the sustainability sub-index for each group of sustainability indicators. Sub-indices then subsequently derived in the form of aggregated index. Weights are derived using analytic hierarchy process. Liberatore scoring and Z score method were employed for aggregation of indicators. The model has been evaluated based on the real-time application for a steel industry. Composite sustainability performance index (CSPI) with its sub-indices for each dimensions of sustainability was evaluated for the time period of four years.

5.5.4. ITT Flygt Sustainability Index

This index is constructed by Pohl (2006) and calculated for ITT Flygt AB over a three years period (2002–2004). ITT Flygt Sustainability Index provides a framework for measuring the sustainability at corporate level. It shows that how well a company stands up to its policies and commitments regarding sustainable development. The index structure was constructed based on information collected from scientific literature and stakeholder engagement process with ITT Flygt and four other engineering companies. The index is calculated by aggregating some forty sustainability-indicators. The identified indicators are specific to each company and are designed to measure the significant sustainability aspects of the company.

5.5.5. G Score method

G Score is a measurement tool to assess the corporate environmental performance based on the information obtained from voluntary environment, health, and safety (EHS) report and is calculated by aggregating the points of five categories namely general environmental management (GEM), input, process, output, and outcome (Jung et al., 2001).

5.5.6. Sustainable Asset management (SAM) Zurich, Switzerland (www.sam-group.com)

Sustainable Asset Management founded by Swiss Re, Volkart Brothers Group and SAM which serves as an in-house department for the investment company Sustainable Performance Group and also assesses companies for external clients. They give input to investment agencies on leading worldwide companies which have strongly committed for sustainability and successfully integrated their economic, ecological and social aspects to their overall management system. They also focus on the companies which are able to recognize opportunities and risks proactively and thus create for themselves long-term, sustainable competitive advantages, and further for the achieve above-average profitability.' The assessment involves going into details of company's 'sustainability opportunities' (its strategic opportunities; product; corporate sustainability), and its 'sustainability risks' (stakeholder engagement; environmental management; resource efficiency; strategic risks; sustainability costs). There are more than 100 criteria are used for the rating. SAM with the Dow Jones indices recently launched a series of sustainability indices (DJSI, 2003). The global index contains 225 components, selected from the Dow Jones global index of 2000 blue chip companies (www.sam-group.com).

5.5.7. Dow Jones sustainability group indices (DJSI), US (www.sustainability-index.com)

The DJSI in association with SAM Sustainability Group developed the first set of global sustainability indices in September 1999. The DJSI provides a platform for corporate to benchmark their sustainability performance. It tracks the performance of the top 10% of the companies in the Dow Jones global index which has taken lead in the field of sustainability. There are five criteria's of sustainability principles on which the ranking of companies are done (Dow Jones/SAM 1999):

Technology: Assess adoption of innovative technology, efficient, effective and economic use of financial, natural and social resources.

Governance: Corporate governance, management responsibility, organizational capability, corporate culture and stakeholder relations.

Shareholders: Sound financial return, long-term economic growth, long-term productivity, enhanced global competitiveness and contributions to intellectual capital.

Industry: Focus of industry towards sustainable value creation and demonstrating commitment and publishing superior performance with respect to sustainability.

Society: Stakeholder engagement, promote social well-being by understanding the needs and expectations of stakeholders, evolving demographics, migratory flows, shifting cultural patterns and the need for continuing education.

The criteria help in financial quantification of sustainability performance by addressing the company's sustainability opportunities and risks. Based on the final score each company's sustainability performance is given ranking.

5.5.8. Bovespa Corporate Sustainability Index

The Bovespa Corporate Sustainability Index (Indices de Sustentabilidade Empresarial – ISE) is the index used for tracking the economic, financial, corporate governance, environmental and social performance of leading companies listed in the São Paulo Stock Exchange. It is primarily based on the triple bottom line (TBL) concept, which evaluates the economic financial, social, and environmental elements in an integrated manner. The economic-financial, social, and environmental dimensions were divided into four groups of criteria: Policies (commitment indicators);

Management (indicating plans, programs, goals, and monitoring); Performance; and Legal Compliance (with environmental and consumer regulation, among others).

5.6. Product Based Sustainability Index

5.6.1. Life Cycle Index

Life Cycle Index (LInX) is a composite index developed for decision making of process and products considering its entire life cycle attributes. The objective of this tool is to help companies provide decision support system in assessing the various design and technological considerations of processes and products. LInX is comprised of four components namely environment, cost, technology, and socio-political factors. It takes care of both aspects wherein targets have to be met separately (fixed) and trade-offs between different impacts are allowed (flexible). This model provides more flexibility in reaching the target by considering the cost of increased need for preference information collection and modeling. Typically, fixed and flexible models both can be incorporated in the index while giving separate targets for selected impact categories. For remaining impact categories, it is combined together and target can be given in term of aggregated impact (Khan et al. 2004).

5.6.2. Ford of Europe's Product Sustainability Index

Ford of Europe's Product Sustainability Index (PSI) is a sustainability management tool is being used by car manufacturer's which is developed based on life cycle assessment approach... PSI is looking at eight indicators reflecting environmental (Life Cycle Global Warming Potential, Life Cycle Air Quality Potential, Sustainable Materials, Restricted Substances, Drive-by-Exterior-Noise), social (Mobility Capability, Safety) and economic (Life Cycle Cost of Ownership) vehicle attributes.

5.7. Sustainability Indices for Cities

5.7.1. Urban sustainability index

The urban sustainability index (USI) developed by Zhang (2003) based on 22 individual indicators in the context of urban China. These indicators were selected from a sustainability indicator database (with 387 indicators) through three rounds of extensive consultation of experts using the pre-coded questionnaire. Total urban sustainability score is having three components of the urban sustainability scores and each of the three components based on a number of individual indicators. All the indicators have given weights using analytical hierarchy process (AHP) method and expert's consultation. The three dimensions are namely urban status, urban coordination and the urban potential. These dimensions capture the three key points of urban sustainability: the urban development capacity, urban coordination capacity and urban development potential. The score of USI is the weighted sum of scores of the three components of the urban sustainability index. The score of each of the three components of the urban sustainability index is the weighted sum of scores of the relevant subcomponents of the urban sustainability. The score on the urban sustainability index has been scaled from 0 to 1.

5.7.2. Sustainability Index for Taipei

This study was carried out for Taipei city. This study is performed based on the views of experts, scholars, government departments and collecting information from scientific literature. It also takes care of specific aspects of Taipei city. A total number of 51 sustainability indicators selected with respect to the socio-economic characteristic of Taipei City. Indicators are classified into economic, social, environmental and institutional dimensions. Subsequent statistical data is collated to understand the trend of sustainability

development from 1994 to 2004. Moreover, the sustainability index is calculated for the four dimensions and for Taipei as a whole. This study applies standard deviation as the basic method for calculating the sustainability index. It standardizes indicator values so that each standardized value falls between 0 and 1. Study applies the equal weight method for initial integration and analyzing overall sustainability trend.

5.7.3. City Development Index

The City Development Index (CDI) developed by the United Nations Centre for Human Settlements (HABITAT) comprises of five sub-indices: (i) an infrastructure index, which is sub-divided into four (equally weighted) indicators namely percentages of households connected to clean water, canalization, electricity and availability of phone network (without mobiles); (ii) waste index sub-classified into twofold (equally weighted) indicators as the percentage of untreated sewage in total wastewater and the percentage of disposal of solid waste in total solid wastes.

5.7.4. The Sustainability Cities Index

Forum for the Future has identified three dimensions of indicators for providing ranking to the cities of Britain. The three dimensions are namely, Environmental Impact of the city which describes the impact of the city on the environment with respect to resource use and pollution, Quality of Life for residents shows the state of city to live in for all its citizens and the third dimension is "Future Proofing" which indicates how well the city is preparing itself for a sustainable future. These index categories were identified to evaluate the sustainability of each city in a transparent and balanced way considering 13 indicators.

5.7.5. Ecosistema Urbano Performance Index

Ecosistema Urbano is a project initiated in Italy in 1994 for 103 main Italian metropolitans. Over the years it has been well established to evaluate the environmental index of the city. This index comprises of 20 environmental indicators and has been tested for last 10 years. The project focuses on the resources quality and its management and environmental protection. Indicators are designed in such a way that it facilitates in evaluating the sustainability of the cities in terms of the impact posed on environmental resources due to economic activities and modern lifestyles. It also evaluates the outcome of the actions carried out to mitigate the pressure. It allows organizing cities environmental data in order to identify a sustainability evaluation criteria and an environmental performance benchmarking.

5.7.6. Sustainable Seattle: developing Indicators of Sustainable Community

Sustainable Seattle has been developed as part of community engagement process to measure the community well being in order to address the health problems of the city in 1998. The development process involved series of consultation meetings which resulted in identification of 40 indicators covering various issues like environment, population and resources, economy, youth and education, health and community.

5.7.7. ISSI Index, Italy

Institute of Sustainable Development, Italy developed a sustainability index for measuring the sustainable performance of Italy. The ISSI index comprises of three components namely socio-economic, environment and resources categories. Each category consists of 10 indicators. This is a multi dimension vector presentation tool which allows comparisons between the Italian regions as well as between countries. Indicators are normalized based on the target value, considering the time series data. Simplified

dashboard has also been realized by color representation of various components (Ronchi et al., 2002).

5.8. Environmental Indices for Policies, Nations and Regions

5.8.1. Environment Sustainability Index

The 2002 Environmental Sustainability Index (ESI) is developed for 142 countries to measure the overall progress towards environmental sustainability. The ESI comprises of sixty-eight basic indicators. These indicators are then aggregated to construct twenty one core indicators. The Environmental Sustainability Index value for each country is aggregated based on the average value for the 21 factors. Every variable in the data set is normalized and scaled between 0 (low sustainability) and 100 (high sustainability) (WEF, 2002a,b).

5.8.2. Environment Quality Index

Environment Quality Index (EQI) was developed for assessing the environmental impacts of various alternatives. The key environmental indicators are defined and selected on the basis of the multiattribute-utility theory and weights are ascertained by using the Analytic Hierarchy Process (AHP) methodology (Saaty, 1980). EQI is evaluated by weighted sum of all environmental indicators, which provides the overall environmental impact of each alternative (Bisset, 1988). Each environmental indicator is scaled in the range 0–10 and evaluated using linear utility function, the utility functions are given the weights according to the importance of each environmental factor, and the weighted sum gives the environmental quality index.

5.8.3. Environmental Sustainability Index

The Environmental Sustainability Index (ESI) was developed for 122 countries under the aegis of World Economic Forum in 2001 which is a measure of overall progress towards environmental sustainability (WEF, 2001). The ESI scores comprises of a set of 22 sub-indicators, each of which combines two to six variables. In total 67 variables are considered.

5.8.4. Concern about environmental problems

The index developed by Parker primarily aims to measure the public concern emerging out of environmental problems (Parker, 1991). This index has eleven indicators and classified in three categories namely air problems, water problems and landscape-related problems. The air problems comprises of four parameters namely nitrogen oxides, sulphur dioxide, carbon dioxide and particulates, two indicators associated with water problems are bathing and fertilizers and five landscape-related indicators are population change, new dwellings, tourism, traffic and waste.

5.8.5. Index of Environmental Friendliness

The Index of Environmental Friendliness has been developed based on aggregation of direct and indirect data related to global and local environmental problems. The scope of the model is designed to cover the key environmental problems of greenhouse effect, ozone depletion, acidification, eutrophication, ecotoxicological effect, resource depletion, photo-oxidation, biodiversity, radiation and noise (Puolamaa et al., 1996).

5.8.6. Environmental Policy Performance Indicator (by Adriaanse A., The Netherlands)

The Environment Policy Performance Indicator has been developed to monitor the trend in the total environmental pressure and also ascertain the adequacy of the environmental policy in the Netherlands (Adriaanse, 1993). This index comprises of six theme indicators namely: (a) change of climate, (b) acidification,

(c) eutrophication, (d) dispersion of toxic substances, (e) disposal of solid waste, and (f) odour and noise disturbance.

5.8.7. Environmental Performance Index

The Environment Performance Index (EPI) has been developed to measure the impact of policy which results in reduction of environmental stresses on human health and promoting ecosystem vitality and sound natural resource management (Bohringer and Jochem, 2007). The EPI aims to evaluate a set of environmental issues monitored through six policy categories for which all governments are liable to undertake" (Esty et al., 2005). All the indicators are scaled from 0 to 100. Weights of indicators are evaluated using principal component analysis and finally it is aggregated in the form of weighted sum.

5.8.8. Environmental Vulnerability Index

The Environmental Vulnerability Index (EVI) has been developed to assess the likelihood of potential damages caused by environmental problems. This index comprises of 32 indicators of hazards, 8 indicators of resistance, and 10 indicators that measure damage (SOPAC, 2005). All 50 indicators are given equal weights and aggregated by an arithmetic mean. The scale is normalized between the range of 1 (indicating high resilience/low vulnerability) and 7 (indicating low resilience/high vulnerability).

5.8.9. Two "Synthetic environmental indices"

In the review paper of Isla M., two composite indicators (one structural and one functional) are developed aiming to assist the local municipalities of Barcelona to monitor and evaluate their environmental performance (Isla, 1997). Twenty-two sub-indicators for environment are combined into 2 synthetic indices, a structural and a functional one.

5.9. Environment Indices for Industries

5.9.1. Eco-points

There are number of eco-points schemes have been developed. Eco-points scores constructed under Eco-Scan are primarily based on a 'distance to target' methodology (Pre Consultants, 2004). Effects are evaluated based on the current level and the target level to achieve sustainability. Eco-points is used to evaluate the processes and products to cover all life cycle stages namely raw material extraction, production, transport, distribution, use and end-of-life. For each stage, once can identify the materials, energy, processes, usage, and transportation details from the options and software calculates an "eco-score" for each of these elements, based on a number of points for a given quantity or usage. Three separate databases viz. Eco-indicator 95, Idemat 96, Eco-indicator 97 of eco-points is provided with the Eco-Scan package.

5.9.2. Eco-compass

Dow Chemical developed the simplified visual tool for representing the summary of Life Cycle Assessment data (Fussler and James, 1996). It is based on the indicators of eco-efficiency developed by the World Business Council for Sustainable Development (WBCSD), with some minor amendments (DeSimone and Popoff, 1997). The eco-compass has six 'poles' or dimensions namely energy intensity, mass intensity, health and environmental potential risk, resource conservation, extent of re-valorization (re-use, re-manufacturing and re-cycling) and service extension.

5.9.3. Eco-indicator 99

The Eco-indicator 99 has been developed by a team of experts from 1997 to 1999 for evaluating the life cycle impacts of materials and processes (Pre Consultants, 2000). This is based on damage

oriented impact assessment method. This tool aims to assist designers and product managers to improve products and processes from life cycle perspective. The Eco-indicator 99 addresses three damage categories based on end-points namely human health, ecosystem quality and resources, minerals and fossil fuels. Specific models have been designed to evaluate the respiratory and carcinogenic effects, global warming potential, ozone layer depletion and ionizing radiation. Impact on human are calculated as DALY (Disability Adjusted Life Years). Impact on eco-systems is evaluated as the percentage of species that have disappeared in a certain area due to the environmental load. Resource extraction is calculated based on the quantity of the remaining mineral and fossil resources.

5.9.4. Environment assessment for cleaner production technologies

Fizal (2007) developed an environmental assessment method for cleaner production technologies enabling quantitative analysis of environmental impact. The method is based on study of profiles related to material and energy flows, waste, product and packaging profiles related to the technology under evaluation. This index is used as a basis for determining an integrated index for overall environmental assessment of cleaner production technologies. The presented method can be employed to evaluate environmental impact of implemented, modernized and modified technologies, processes and products as well to perform comparative analyses of alternative technologies.

5.9.5. COMPLIMENT – environment performance index for industries

Hermann et al. (2007) developed a tool known as COMPLIMENT for providing comprehensive detailed information on the overall environmental impact of an industry. COMPLIMENT combines various tools such as life cycle assessment, multi-criteria analysis and environmental performance indicators. The methodology is based on identification environmental performance indicators considering life cycle approach, providing weights to indicators and aggregation of indicators. EPIs are calculated while considering the goal and scope definition of an LCA, followed by inventory analysis and conversion and subsequently the classification, characterization and normalization activities. The various impact categories are global warming, acidification potential, eutrophication potential, ozone precursors and human health. Three types of weights were evaluated based on AHP techniques for local, regional and national perspectives. Weights are multiplied to each impact category and is evaluated in terms of normalized potential impacts per category. The resulting weighted impacts per category can then be added to form an index of the normalized total potential environmental impact for each perspective.

5.10. Social and quality of life based indices

5.10.1. Gender Empowerment Measure

The Gender Empowerment Measure (GEM) is a tool developed for capturing the issues related to gender inequality. It focuses on women's opportunities rather than their capabilities on the following three areas:

- Share of parliament seats in percentage of women and men indicating participation of women in political decision making.
- Women's and men's percentage shares of positions as legislators, senior officials and managers and women's and men's percentage shares of professional and technical positions depict economic participation and decision-making.
- Power over economic resources, as measured by women's and men's estimated earned income (PPP US\$).

Both indices Gender Empowerment Measure (GEM) and Gender-related Development Index (GMI) are evaluated as arithmetic means of three components. The components of each Index are scaled between 0 and 1 before computation (UNDP, 1996).

5.10.2. Physical Quality of Life Index

The Physical Quality of Life Index (PQLI) developed by Morris (1979) which comprises of three indices- life expectancy index, infant mortality index and adult literacy rate to compute the PQLI. Ram (1982) applied principal component analysis and recomputed the PQLI.

5.10.3. Well-Being Assessment (Well-Being Index – WI)

The Well-Being Assessment developed by Prescott-Allen (2001) comprises of arithmetic mean of Human Well-being Index (HWI) and an Ecosystem Well-Being Index (EWI). HWI has 5 sub-components while EWI comprises of six sub-components. The various sub-components of HWI are namely Health and Population, Welfare, Knowledge, Culture and Society and Equity Index. The EWI consists of sub-components for land, water, air, species and genes as well as for resources deployment. There are total 87 indicators divided into 36 indicators for HWI and 51 indicators for EWI (Bohringer and Jochem, 2007). Indicators are judged based on subjective assessment, normalized by a proximity-to-target approach and aggregation is carried out by a weighted arithmetic mean.

5.10.4. National Health Care Systems Performance

The National Health Care Systems Performance Index has been developed to measure the performance of all 120 Health Authorities in England, Scotland and Wales. The aim of the index is to evaluate the trend in health care standards across the country, gap in the health of town and city dwellers, and impact of poverty on the health service (King's Fund, 2001). There are six sub-indicators were selected which cover various aspects of the performance of the National Health Care System namely deaths from cancer, deaths from heart disease, total number of people on hospital waiting lists, percentage of people on waiting lists waiting over 12 months, number of hip operations and deaths from 'avoidable' diseases (e.g. TB, asthma, etc.).

5.10.5. Overall Health System Attainment

The World Health Organization has developed an index that evaluates the performance of health systems in 191 countries, in terms of overall level of goal achievement and the distribution of that achievement (WHO, 2000). Goal achievement and its distribution have been given equal weights. The index comprises of five components namely overall good health, distribution of good health, overall responsiveness, distribution of responsiveness and fairness in financial contributions. Good health is measured by DALY and the distribution of good health by an equality of child survival index.

5.10.6. Index for sustainable society

This index has been developed recently for a sustainable society called as the SSI which combines both aspects of sustainability and quality of life. The SSI allows policy makers to visualize the level of sustainability of a country, measure the progress and identify the areas where improvements are urgently required.

The framework of the Index for a Sustainable Society consists of five categories, each built up from several indicators.

- **Personal Development** (Healthy Life, Sufficient Food, Sufficient to Drink, Safe Sanitation, Education Opportunities and Gender Equality).
- **Clean Environment** (Air Quality, Surface Water Quality and Land Quality).

- **Well-balanced Society** (Good Governance, Unemployment, Population Growth, Income Distribution and Public Debt).
- **Sustainable Use of Resources** (Waste Recycling, Use of Renewable Water Resources and Consumption of Renewable Energy).
- **Sustainable World** (Forest Area, Preservation of Biodiversity, Emission of Greenhouse Gases, Ecological Footprint and International Cooperation).

5.11. Energy based indices

5.11.1. Sustainability assessment tool for energy system

Begic and Afghan (2007) performed multi-criteria sustainability assessment of various options of the energy power system. A 110MW Thermal Power Unit is compared with other technologies of power generation viz. thermal power unit with a coal-fueled boiler with combustion in fluidized bed; combined cycle gas turbine plants; hydropower plant, power plants based on solar energy (photovoltaic [PV] systems); wind turbines; and biomass power plants. The assessment methodology focuses on stochastic models of uncertainty to assess the various systems. Non-numeric (ordinal), non-exact (interval) and non-complete information (NNN information) were used to obtain normalization indexes. This tool enables decision maker to select the most optimal options of power plant.

5.11.2. Energy indicators for tracking sustainability in developed countries

The sustainability discussion is focused on environmental topics for developed countries and issues of poverty and equity for developing countries. Consequently, for measuring sustainable development in a developing country, the inclusion of a poverty indicator in a set of lead indicators is essential. Moreover, human activities and most sustainability issues are closely related to energy use. The energy system is a sound framework for providing lead indicators for sustainable development (Fajik and Naim, 2007). Kemmler and Spreng (2007) developed energy-based indicators of poverty which is quite relevant for social issues. The three energy measures that are used for the comparison are primary, useful, and an access-adjusted useful energy (all per capita). The indicators for poverty are measured through various parameters namely total household expenditure, education level of the head of the household, calorie intake, source of drinking water, sanitation, house condition, dwelling area size, dwelling construction type and land possession.

5.12. Ratings

5.12.1. Benchmarking US petroleum refineries, the Environmental Defence Fund (EDF), US NGO

This benchmarking study on environmental performance carried out for ranking of 166 oil refineries based on publicly available data on toxic waste generation and pollutant release. Data were normalized based on the refinery capacity to adjust for its size (Ditz and Ranganathan, 1997).

5.12.2. ECCO-CHECK Index, Environmental Risk Rating Ltd, Surrey, UK

Ecco-Check Index has been used as a fully commercial index of corporate environmental performance in Europe. This index aims to provide information about the company's liabilities evaluated based on the various elements of UK legislation.

5.12.3. Investor Responsibility Research Centre (IRRC), Washington DC, US (www.irrc.org)

Investor Responsibility Research Centre compiles corporate environmental profile which comprises of 60 indicators of

emissions (total weight of corporate toxic release inventory emissions), volume of oil spill, volume of chemical spill, hazardous waste (number of Superfund national priority list sites), compliance (punitive fines for environmental non-compliance), environmental litigation (number of disclosed environmental litigation incidents). Indicators are normalized by considering 'environmental risk per unit revenue', facilitates easy comparisons of companies of different sizes and capacities.

5.12.4. Council on Economic Priorities (CEP), New York, US (www.cepnyc.org)

CEP compiles information of corporate environment performance of the companies and provides rating based on their performance. There are thirteen indicators evaluated for environmental performance namely releases, policy, packaging, office recycling, raw materials/waste, toxic reduction, community impact, energy conservation, natural resources, accidents, Superfund sites, compliance and environmental technologies. Some of the social factors such as ethics, charitable giving, community outreach, family benefits and workplace issues are also assessed.

5.12.5. Oeko Sar Fund, Bank Sarasin & Cie, Basel, Switzerland (www.sarasin.ch)

This bank assesses environmental performance for its own environmental fund. The assessment system was developed by environmental consultant Ellipson Ltd in Basel which is in line with the same system used by Norwegian UNI Storebrand designed by Ellipson Ltd. The various components used for environmental and social ratings are: policy/strategy, production/provision of service, products/services, environmental management systems, customers/suppliers, employee relations, public relations and shareholders/investors.

The various companies are grouped into three categories based on their potential environmental impact: high (e.g. steel industry), medium and low (service sector companies). For inclusion in the fund, the company should achieve a desired level of rating depending on the impact categories. Moreover, negative criteria are used, avoiding any company that drives more than 5% from the defence industry, nuclear power and nuclear power plant construction, gene technology, chlorine industry, agrochemical and automobile industries. All the data and information are collected from the company annual reports, environment reports and other publications from the companies, management interviews, newspaper clippings, articles, information from environmental pressure groups such as Greenpeace, and through filled in questionnaire.

5.12.6. Storebrand Scudder Environmental Value Fund, Oslo, Norway (www.storebrand.no)

The Storebrand Scudder environmental investment fund was set up in 1996 by the Norwegian insurers, UNI Storebrand. This index is primarily used to evaluate the environmental performance of the companies. The index is calculated from environmental indicators of: global warming, ozone depletion, material efficiency, toxic release, energy intensity, water use, environmental liabilities, and environmental management quality. Storebrand also uses the index to measure the 'environmental dividend' which is calculated by the difference between the fund's environmental performance and the market on average. Although this is termed as sustainability index but it only focuses on environmental performance, and does not include social issues.

5.12.6.1. *Innovest strategic value advisors* (www.innovestgroup.com). Innovest strategic value advisors developed a proprietary investment model 'Eco Value 21' in US to evaluate both the environmental risk and opportunity profiles of companies and determine the related impacts for investors. This model also provides a fund

rating as well as a customized portfolio analysis on both US and Canadian stocks.

5.12.7. OEKOM Environment Rating

Oekom research AG, an international supplier of environmental research studies based in Munich has established Environmental-Rating in 1993. This rating methodology has since been continuously improved. This method is being used to analyze and assess over 400 companies quoted on various stock markets worldwide. The research process of an Environmental-Rating is divided into three steps. First, the relevant ecological and industrial specific assessment criteria are defined. The following are the three typical criteria's and their sub-components identified for an automobile industry:

Environmental management

- Environmental goals/environmental managers.
- Environmental management systems/environmental audits/environmental programmes/ecological balance sheet.
- Environmental standards used in overseas operations.
- Partnerships/training and personnel/environmental office management.
- Suppliers/transport and logistics.

Products and services

- Reduction of emissions and resource use.
- Development of efficient engines and alternative drive systems.
- Durability.
- Re-usability/suitability for recycling.
- Take-back of products and recycling capacities.
- Avoidance of toxic substances.
- Use of environmentally compatible materials.

Environmental benchmarks

Analysis of the following information in relation to turnover, output or number of employees:

- Energy and water consumption.
- Air pollution, e.g. CO₂, NO_x, SO_x, dust.
- Water pollution.
- Quantity of waste and its composition, e.g. proportion of recyclable raw materials, proportion of hazardous waste.

Secondly, each rating area is given a grade on a scale from A+ to D- based on the ecological activities within the area:

A+: The Company's environmental activities are especially progressive within the industry.

D-: The company focuses on complying with environmental regulation but shows little or no further environmental commitment.

Thirdly, the three rating areas are weighted according to the specific industry after which the separate grades are brought together to form the overall rating.

5.12.8. Jupiter Income Trust Funds (subsidiary of Jupiter Tyndall Group PLC), UK (www.jupiteronline.co.uk)

Jupiter Income Trust Funds developed by eight UK unit trusts and 11 investment trusts especially created to achieve environmental and financial objectives. They use very substantial investment criteria to assess companies and avoid companies that derive more than 1% from oppressive regimes, or armaments, nuclear or tobacco industries.

Table 3
Summary table of the sustainability indices.

	Name	Number of sub-indicators	Scaling/normalization	Weighting	Aggregation
1	Summary Innovation Index	17	[+10, –10] Mean subtraction	Equal weights	Number of indicators that are more than 20% above the European average minus the number of indicators which are more than 20% below and division by the total number of available indicators for each country. Synthesis of variables using PCA PCA applied to define weights. One principal component adopted as the composite indicator Weighted average
2	Internal Market Index	19	Percentage annual differences	PCA	
3	Business climate indicator	5	–100 to 100	PCA & FA	
4	Investment in the knowledge based economy	7	Mean subtraction and division by the standard deviation	Choice of weights is up to the user	Weighted average
5	Performance in the knowledge based economy	7	Mean subtraction and division by the standard deviation	Choice of weights is up to the user	
6	Relative intensity of regional problems in the Community	3	Mean subtraction and division by the standard deviation	Empirical weights are determined considering the degree of correlation between two sub-indicators	
7	Economic Sentiment Indicator	4	Dividing the month-to-month changes with the average month to month change	Equal weights	Summation
8	Composite Leading Indicators	Number varies across member states	Mean subtraction and division by the mean of the absolute differences from the mean	Smoothing via “Months for cyclical dominance moving average”	Arithmetic average of the normalised indicators
9	Information and communication technologies	5	Country rankings for each indicator		Sum of rankings
10	Environmental Sustainability Index	68	Mean subtraction and division by the standard deviation	Equal weights	Arithmetic average of the normalised indicators
11	Human Development Index	3	[0, 1], using minimum and maximum value for each indicator as goal post	Equal	Arithmetic average of the scaled indicators
12	Technology Achievement Index	8 (grouped in 4 sub-indices)	[0, 1] using minimum and maximum value for each indicator as goal post	Equal	Arithmetic average of the 4 sub-indices
13	Overall Health System Attainment	5	[0, 100]	Weights based on survey of preferences of informed individuals	Summation
14	Two “Synthetic environmental indices”	22	Indicators are combined into 2 synthetic indices a structural and a functional one	Equal	Arithmetic average of the indicators
15	National innovation capacity	8	The logarithmic values of the sub-indicators are considered	Multiple regression model	Regression analysis employed
16	General Indicator of Science & Technology	13	FA/PCA was applied to define weights.	PCA	PCA (primary principal component of each set) –
17	Success of software process improvement	14	Subjective scale	PCA	
18	European Labour Market Performance	3	[0, 100] Efficiency frontier (objective method)	Weight based on value judgment	–
19	Eco-indicator 99	3	Division by a reference value for each indicator	Weighting scheme is selected by a panel of experts	–
20	Concern about environmental problems	11	Dividing the value in each year by the value for the year for which each indicator is first available	Weights derived from public opinion polls	Sum of normalized weights multiplied by the corresponding normalized indicators
21	National Health Care systems performance	6	No standardisation	‘Budget allocation’ survey of 1000 people across the UK defined the weights for the indicators	Weighted average

Table 3 (Continued)

	Name	Number of sub-indicators	Scaling/normalization	Weighting	Aggregation
22	Index of sustainable and economic welfare	20	Sub-indicators are expressed in monetary terms	Equal. Allow the user to change the weightings and assumptions used in the index	Arithmetic average of the indicators
23	Index of Environmental Friendliness	11	Normalization of problem indices by dividing the sectoral problem index by the value of the national problem index	Subjective weights for the normalised problem indices are determined from experts by means of the Analytic Hierarchy Process	Weighted sum
24	Environmental Policy Performance Indicator	6 theme indicators (composed of several simple indicators)	Division by the corresponding a) sustainability levels, and b) policy targets	Equal	Sum of the six theme indicators
25	Living Planet Index	2000 populations of more than 11,000 species	Ratio to current and previous year	Equal weights	Geometric mean
26	Ecological footprint	6	Area	Equal	Summation
27	City Development Index	5	Distance from mean	PCA/experts	Weighted average
28	Environment Performance Index	Six policy categories	[0, 100]	PCA/experts	Weighted average
29	Environment Vulnerability Index	50	Aim = 1, worst = 7	Equal	Average
30	Well Being Index	87	[0, 100]	Subjective	Weighted average
31	Composite Sustainability Performance Index	Five categories; 59 indicators	Distance from mean divided by standard deviation	AHP	Weighted average
32	Composite sustainable development index	Three categories; 38 indicators	Distance from maximum and minimum	AHP	Weighted average
33	Ford of Europe's Product Sustainability Index	8	Life cycle impact assessment	–	–
34	Genuine Savings Index	3 capitals	Monetized	Equal	Summation
35	Sustainability Performance Index	5	Area	Equal	Total area per unit product divided by area per capita
36	Compass Index of Sustainability	Four categories of indicators	[0, 100]	Equal	Average
37	ITT Flygt Sustainability Index	40	Normative judgment [+10, –100]	Company opinion	Summation
38	Environment Quality Index	Based on multi-attribute utility theory	[0, 10], linear utility function	AHP	Weighted sum
39	Life Cycle Index	4 categories; 21 indicators	Linear and non linear functions	AHP	Geometric mean
40	G Score	5 categories	Subjective	Equal	Summation
41	Index of Sustainable Society	5 categories; 22 indicators	Mathematical formula for each indicator	Equal	Summation

5.12.8.1. FTSE Good Index. The FTSE4 Good Index Series aims to evaluate the performance of companies that meet globally accepted corporate responsibility standards and also facilitates investment in those companies. The FTSE4Good selection criteria are based on measures which ideally represent good corporate responsibility practice globally. It involves detailed stakeholder engagement and market consultation process. The criteria are revised on regular basis to ensure that they continue to reflect standards of responsible business practice, and developments in socially responsible investment as they evolve.

The details of various indexes viz. scaling, normalization, weighting and aggregation are summarized in Table 3.

6. Conclusion

This paper covers an overview of various sustainability indices which are practically implemented to measure sustainable development. Attempts have been made to compile the information about how the index were formulated using the three central steps viz. – normalization, weighting, aggregation.

Indices and rating systems are subject to subjectivity despite lot of objectivity used in assessing the sustainability. The major advantages associated with indices are because of its multi-dimensionality, use of normalization and aggregation based on scientific rules and robust statistical methods.

Although there are various international efforts on measuring sustainability, only few of them have an integral approach taking into account environmental, economic and social aspects. In most cases the focus is on one of the three aspects. Although, it could be argued that they could serve supplementary to each other, sustainability is more than an aggregation of the important issues. It is also about their interlinkages and the dynamics developed in the system. This point will be missing if tried to use them supplementary and it is one of the most difficult parts to capture and reflect in measurements.

If the indices are poorly constructed, this will provide misleading results. It will be interpreted altogether differently. The sensitivity analysis and uncertainty analysis can help in testing the efficacy and robustness of the index. Sub-indicators should be selected meticulously. Choice of model, weighting mechanism and treatment of missing value also play a predominant role while construction of framework. Since the need of data collection enhanced due to large number of indicators for indices, it is always worth while to conduct statistically significant analysis on the data. There are two critical issues viz. correlation among indicators and compensability between indicators must be taken into consideration.

Indicators of sustainable development should be selected, revised and refined based on the appropriate communities of interest. Thus, indices should be constructed within a coherent framework. This would help in selection of suitable parameters which reflect

influence the policy goal and also ensures that the evaluation process involved could change through time according to the interests of the particular stakeholders involved in the construction of the indicator.

References

Adriaanse, A., 1993. Environmental Policy Performance Indicators. A Study on the Development of Indicators for Environmental Policy in The Netherlands. SDV Publishers, The Hague.

Atkinson, G.D., Dubourg, R., Hamilton, K., Munasigne, M., Pearce, D.W., Young, C., 1997. Measuring Sustainable Development: Macroeconomics and the Environment. Edward Elgar, Cheltenham.

Azapagic, A., 2004. Developing a framework for sustainable development indicators for the mining and minerals industry. *Journal of Cleaner Production* 12, 639–662.

Bebbington, J., Brown, J., Frame, B., 2007. Accounting technologies and sustainability assessment models. *Ecological Economics* 61, 224–236.

Begic, F., Afghan, N.H., 2007. Sustainability Assessment tool for the decision making in the energy system – Bosnian case. *Energy* 32, 1979–1985.

Berke, P., Manta, M., 1999. Planning for Sustainable Development: Measuring Progress in Plans. Working Paper. Lincoln Institute of Land Policy, Cambridge, MA, <http://www.lincolnst.edu/pubs/pub-detail.asp?id=58>.

Bisset, R., 1994 [1988]. Developments in EIA methods. In: Wathern, P. (Ed.), *Environmental Impact Assessment*. Routledge, London, pp. 47–60 (Chapter 3).

Bohringer, C., Jochem, P.E.P., 2007. Measuring the immeasurable—a survey of sustainability indices. *Ecological Economics* 63, 1–8.

Booyen, F., 2002. An overview and evaluation of composite indices of development. *Social Indicators Research* 59, 115–151.

Bossel, H., 1999. Indicators for Sustainable Development: Theory, Method, Applications. A Report to the Balaton Group. IISD, Canada.

CES, 2000. Index of Sustainable and Economic Welfare.

Chambers, N., Simmons, C., Wackernagel, M., 2000. Sharing Nature's Interest Ecological Footprints as an indicator of Sustainability (ch. 9, pg. 145 Assessing Impact of org.s and Services).

Chambers, N., Lewis, K., 2001. Ecological Footprint Analysis: Towards a Sustainability Indicator for Business. ACCA Research Paper, vol. 65. Glasgow.

Cobb, C., Halstead, T., Rowe, J., 1995. The Genuine Progress Indicator: Summary of Data and Methodology. Redefining Progress, CA.

Commission of the European Communities, 1984. The Regions of Europe: Second Periodic Report on the Social and Economic Situation of the Regions of the Community, Together with a Statement of the Regional Policy Committee. OPOCE, Luxembourg.

CSD, 2001. Indicators of Sustainable Development: Guidelines and Methodologies. Commission on Sustainable Development, New York, USA, <http://www.un.org/esa/sustdev/natlinfo/indicators/indisd/indisd-mg2001.pdf>.

Daly, H.E., Cobb, J.B., 1989. For the Common Good: Redirecting the Economy Towards the Community, the Environment and a Sustainable Future. Boston.

Ditz, D., Ranganathan, J., 1997. Measuring Up: Towards a Common Framework for Tracking Corporate Environmental Performance. World Resources Center, Washington, DC.

DeSimone, L., Popoff, F., 1997. Eco-Efficiency: The Business Link to Sustainable Development. MIT Press, Cambridge.

Dewan, 2006. Sustainability Index. An Economic Perspective.

DG ECFIN, 2000. Business Climate Indicator.

DG Enterprise, 2001. Summary Innovation Index.

DG MARKT, 2001. Internal Market Scoreboard.

DJSI – Dow Jones Sustainability Indexes, 2003. Corporate Sustainability Sector Overview – DJSI Industry Group Oil, Gas and Coal Companies, Available at <http://www.sustainability-index.com/> (September 2004).

Ebert, U., Welsch, H., 2004. Meaningful environmental indices: a social choice approach. *Journal of Environmental Economics and Management* 47, 270–283.

Ediger, V.S., Hosgor, E., Surmeli, N.A., Tathdil, H., 2007. Fossil sustainability index: an application of resource management. *Energy Policy* 35, 2969–2977.

EEA, 2001. Total Material Requirement of European Union, technical report No. 56, Copenhagen.

Emam, K., Goldenson, D., McCurley, J., Herbsleb, J., 1998. Success or Failure? Modeling the Likelihood of Software Process Improvement. International Software Engineering Research Network. Technical Report ISERN-98-15.

ESI (Environmental Sustainability Index), 2001/2002. Environmental Sustainability Index. Yale Center for Environmental Law & Policy, New Haven.

Estes, R., 1974. A Comprehensive Corporate Social Reporting Model. Federal Accountant, pp. 9–20.

Esty, D.C., Levy, M.A., Srebotnjak, T., de Sherbinin, A., 2005. Environmental Sustainability Index: Benchmarking National Environmental Stewardship. Yale Center for Environmental Law & Policy, New Haven.

EU, 1999. Towards Environmental Pressure Indicators for the EU, Environment and Energy Paper Theme 8, Luxembourg.

The Environmental Vulnerability Index (EVI), 2005 [1994]. SOPAC Technical Report (Suva, Fiji Islands). SRU (Rat von Sachverständigen für Umweltfragen).

Fagerberg, J., 2001. In: Lundvall, B., Archibugi, D. (Eds.), *Europe at the Crossroads: The Challenge from Innovation-based Growth in the Globalising Learning Economy*. Oxford Press.

Fajik, B., Naim, H.A., 2007. Sustainability assessment for energy systems. *Energy* 32, 1979–1985.

Fizal, M., 2007. An environmental assessment method for cleaner production technologies. *Journal of Cleaner Production* 15, 914–919.

Funtowicz, S.O., Ravetz, J.R., 1990. Uncertainty and Quality in Science for Policy. Kluwer Academic Publishers, Dordrecht.

Fussler, C., James, P., 1996. Driving Eco-Innovation: A Breakthrough Discipline for Innovation and Sustainability. Pitman Publishing, London.

Godfrey, L., Todd, C., 2001. Defining thresholds for freshwater sustainability indicators within the context of South African water resource management. In: 2nd WARFA/Waternet Symposium: Integrated Water Resource Management: Theory, Practice, Cases, Cape Town, South Africa, <http://www.waternetonline.ihe.nl/aboutWN/pdf/godfrey.pdf>.

GRI – Global Reporting Initiative, 2002a. The Global Reporting Initiative – An Overview. Global Reporting Initiative, Boston, USA, Available at www.globalreporting.org (2004).

GRI – Global Reporting Initiative, 2002b. Sustainability Reporting Guidelines 2002 on Economic and Social Performance. Global Reporting Initiative, Boston, USA, Available at www.globalreporting.org (2004).

Guenno, G., Tizzi, S., 1998. The index of sustainable economic welfare (ISEW) for Italy. *Nota Di Lavoro* 5.98.

Hamilton, C., 1999. The genuine progress indicator methodological developments and results from Australia. *Ecological Economics* 30, 13–28.

Hermann, B.G., Kroeze, C., Jawit, W., 2007. Assessing environmental performance by combining life cycle assessment, multi-criteria analysis and environmental performance indicators. *Journal of Cleaner Production* 15, 1787–1796.

Holmberg, J., Karlsson, S., 1992. On designing socio-ecological indicators. In: Svedin, U., Anianssons, B. (Eds.), *Society and the Environment: A Swedish Research Perspective*. Kluwer Academic Publishers, Dordrecht, Netherlands, pp. 89–106.

IMSA (Instituut voor Milieu-en Sastemanalyse), 1995. A Pilot ISEW for the Netherlands. IMSA, Amsterdam.

Isla, M., 1997. A Review of the Urban Indicators Experience and a Proposal to Overcome Current Situation. The Application to the Municipalities of the Barcelona Province.

IUCN/IDRC (The World Conservation Union/International Development Research Center), 1995. Assessing progress towards sustainability: A new approach. In: Thadeus, Trzuna (Eds.), *A Sustainable World: Defining and Measuring Sustainable Development*. IUCN/IDRC, Sacramento, pp. 152–172.

Jackson, T., Marks, N., 1994. Measuring Sustainable Economic Welfare – A Pilot Index: 1950–1990. Stockholm Environment Institute, Stockholm.

Jung, E.J., Kim, J.S., Rhee, S.K., 2001. The measurement of corporate environmental performance and its application to the analysis of efficiency in oil industry. *Journal of Cleaner Production* 9, 551–563.

Kates, R.W., Clark, W.C., Corell, R., Hall, M.J., Jaeger, C.C., Lowe, I., McCarthy, J.J., Schellnhuber, H.J., Bolin, B., Dickson, N.M., et al., 2001. Sustainability science. *Science* 292, 641–642.

KEI, 2005. Knowledge Economy Indicators, Work Package 7, State of the Art Report on Simulation and Indicators.

Khan, F., Sadiq, R., Veitch, B., 2004. Life Cycle inDeX (LnX): a new indexing procedure for process and product design and decision-making. *Journal of Cleaner Production* 12, 59–76.

Kemmler, A., Spreng, D., 2007. Energy indicators for tracking sustainability in developing countries. *Energy Policy* 35, 2466–2480.

King's Fund, 2001. The Sick List 2000, the NHS from Best to Worst.

Krajnc, D., Glavic, P., 2005. A model for integrated assessment of sustainable development. *Resource Conservation Recycling* 43, 189–208.

Krotscheck, C., Narodoslawsky, M., 1994. The sustainable process index – a new dimension in ecological evaluation. *Ecological Engineering* (June).

Kuik, O.J., Gilbert, A.J., 1999. Indicators of sustainable development. In: Van den Bergh, J.C.J.M. (Ed.), *Handbook of Environmental and Resource Economics*. Edward Elgar, Cheltenham, pp. 722–730.

Labuschagne, C., Brenta, A.C., Ron, P.G., Van Ercka, P.G., 2005. Assessing the sustainability performances of industries. *Journal of Cleaner Production* 13, 373–385.

Lancker, E., Nijkamp, P., 2000. A policy scenario analysis of sustainable agricultural development options: a case study for Nepal. *Impact Assessment and Project Appraisal* 18 (2), 111–124.

Lundin, U., 2003. Indicators for measuring the sustainability of urban water systems – a life cycle approach. Ph.D. Thesis. Department of Environmental Systems Analysis, Chalmers University of Technology, Göteborg, Sweden.

Meadows, D., 1998. Indicators and Information Systems for Sustainable Development – A Report to the Balaton Group. The Sustainability Institute, Hartland, USA, <http://www.sustainabilityinstitute.org/resources.html#SIpapers>.

Moldan, B., Hák, T., Kovanda, J., Havránek, M., Kušková, P., 2004. Composite indicators of environmental sustainability. Invited paper to 'Statistics, Knowledge and Policy: OECD World Forum on Key Indicators', Palermo Italy, 10–13 November 2004.

Morris, D., 1979. Measuring the Condition of the World's Poor: The Physical Quality of Life Index (Overseas Development Council). Pergamon Press, New York.

Muldrur, U., 2001. Technical Annex on Structural Indicators. Two Composite Indicators to Assess the Progress of Member States in their Transition Towards a Knowledge-based Economy. DG RTD.

Nardo, M., Saisana, M., Saltelli, A., Tarantola, S., 2005. Tools for Composite Indicators Building. European Commission, Ispra.

Ness, B., Urbel, P., Piirsalu, E., Anderberg, S., Olsson, L., 2007. Categorising tools FOS sustainability assessment. *Ecological Economics* 60, 498–508.

Nilsson, R., 2000. Calculation of composite leading indicators: a comparison of two different methods. Paper presented at the CIRET Conference, Paris, October 2000.

- National Institute of Science and Technology Policy, 1995. Science and Technology Indicators, NISTEP Report No. 37, Japan.
- Nordhaus, W.D., Tobin, J., 1973. Is growth obsolete? In: Moss, M. (Ed.), *The Measurement of Economic and Social Performance: Studies in Income and Wealth*, vol. 38.
- OECD, 1993. Core Set of Indicators for Environmental Performance Reviews. Paris.
- OECD, 1998. Towards Sustainable Development: Environmental Indicators. OECD, Paris.
- OECD – Organisation for Economic Co-operation and Development, 2002. An Update of the OECD Composite Leading Indicators. Short-term Economic Statistics Division, Statistics Directorate/OECD, Available at <http://www.oecd.org> (2004).
- Parker, J., 1991. Environmental reporting and environmental indices. Ph.D. Thesis. Cambridge, United Kingdom.
- Pearce, D.W., Atkinson, G., 1993. Capital theory and the measurement of sustainable development: an indicator of weak sustainability. *Ecological Economics* 8, 103–108.
- Pohl, E., 2006. Towards Corporate Sustainable development - ITT Flygt Sustainability Index, Licentiate Thesis, Mälardalen University.
- Porter, M., Stern, S., 1999. The New Challenge to America's Prosperity: Findings from the Innovation Index. Council on Competitiveness, Washington, DC.
- Pre Consultants, 2000. The Eco-Indicator 99. A Damage Oriented Method for Life Cycle Impact Assessment.
- Pre Consultants, 2004. The Eco-indicator 99 – A Damage Oriented Method for Life Cycle Assessment. Methodology Report, Available at <http://www.pre.nl/>.
- Prescott-Allen, R., 1995. Barometer of Sustainability: a Method of Assessing Progress towards Sustainable Societies. PADATA, Victoria, Canada.
- Prescott-Allen, R., 2001. The Wellbeing of Nations. Island Press, Washington, DC.
- Puolamäe, M., Kaplas, M., Reinikainen, T., 1996. Index of Environmental Friendliness. A Methodological Study. Eurostat.
- Ram, R., 1982. Composite Indices of Physical Quality of Life, basic Needs fulfillment, and Income. A 'Principal Component' Representation. *J. Dev. Econ.* 11, 227–247.
- Ramachandran, N., 2000. Monitoring Sustainability: Indices and Techniques of Analysis. Concept Publishing Company, New Delhi.
- Ronchi, E., Federico, A., Musmeci, F., 2002. A system oriented integrated indicator for sustainable development in Italy. *Ecological Indicators* 2, 197–210.
- Saaty, T.L., 1980. The Analytic Hierarchy Process. McGraw-Hill Book Co., NY.
- Saisana, M., Tarantola, S., 2002. State-of-the-art report on current methodologies and practices for composite indicator development. Prepared for the European Commission (Report number: EUR 20408 EN).
- Schmidt-Bleek, 1994. How to Reach a Sustainable Economy. Wuppertal Papers No. 24, Wuppertal, pp. 10–13.
- Singh, R.K., Murty, H.R., Gupta, S.K., Dikshit, A.K., 2007. Development of composite sustainability performance index for steel industry. *Ecological Indicators* 7, 565–588.
- Smeets, E., Weterings, R., 1999. Environmental Indicators: Typology and Overview. European Environment Agency, Copenhagen, Denmark.
- Spohn, O.M., 2004. Sustainable Development Indicators within the German Wa... Industry – A Case Study Carried out at Chalmers University of Technology, Sweden.
- Storrie, D., Bjurek, H., 1999. Benchmarking the basic performance indicators using efficiency frontier techniques. Report Presented to the European Commission Employment and Social Affairs DG.
- UNDP, 1996. UNDP's Strategy for Implementing its Gender in Development Policy. UNDP, New York.
- UNEP (United Nations Environmental Programme), 2000. Integrated Environmental and Economic Accounting – An Operational Manual. Oxford University Press, Oxford.
- United Nations, United Nations, 2001. Human Development Report. <http://www.undp.org>.
- United Nations, 1990. Human Development Report, <http://www.undp.org>.
- Wackernagel, M., Rees, W., 1997. Unser ökologischer Fußabdruck. Birkhäuser Verlag, Basel.
- Wackernagel, M., Rees, W., 1996. Our Ecological Footprint: Reducing Human Impact on the Earth. New Society Publishers, Gabriola Island, BC.
- Warhurst, A., 2002. Sustainability Indicators and Sustainability Performance Management. Report to the Project: Mining, Minerals and Sustainable Development (MMSD). International Institute for Environment and Development (IIED), Warwick, England, http://www.iied.org/mmsd/mmsd.pdf/sustainability_indicators.pdf.
- WBCSD – World Business Council for Sustainable Development, 1997. Signals of Change: Business Progress Toward sustainable Development. Geneva, Switzerland.
- World Business Council for Sustainable Development (WBCSD), 1999. Eco-efficiency Indicators and Reporting: Report on the Status of the Project's Work in Progress and Guidelines for Pilot Application. Geneva, Switzerland.
- WCED – World Commission on Environment and Development, 1987. Our Common Future. Oxford Univ. Press, Oxford.
- WEF – World Economic Forum, 2002a. An initiative of the Global Leaders Tomorrow Environment Task Force. In: Annual Meeting 2002. Pilot Environment Performance Index. Available at <http://www.ciesin.columbia.edu/indicators/ESI/EPI2002.11FEB02.pdf>.
- World Economic Forum (WEF), 2002b. The 2002 Environmental Sustainability Index. World Economic Forum, 2001. Environmental Sustainability Index, <http://www.ciesin.org/indicators/ESI/index.html>.
- Welsch, H., 2005. Constructing meaningful sustainability indices. In: Böhringer Lange, A. (Eds.), *Applied Research in Environmental Economics*. Physica Verlag, Heidelberg.
- WHO, 2000. Overall Health System Attainment. Winnipeg, pp. 7–20.
- WWF (World Wildlife Fund), 1998. Living Planet Report 1998. WWF, Gland.
- Zdan, T., 2010. Assessing Sustainable Development: Principles in Practice. International Institute for Sustainable Development.
- Zhang, M., 2002. Measuring urban sustainability in China. Thela Thesis. Amsterdam.
- Zolotas, X., 1981. Economic Growth and Declining Social Welfare. New York University Press.